

Southern California Edison
Risk-Model-Group

DATA REQUEST SET O E I S - R M W G _ 2 0 2 4 - 0 0 1

To: Energy Safety
Prepared by: Bryan Landry
Job Title: Senior Advisor – Enterprise Risk Management
Received Date: 5/16/2024

Response Date: 6/11/2024

Question 01:

Regarding: visual depiction of risk models

Please provide a visual depiction of various models used by utilities and how such models are connected (e.g., swim lanes, flowchart).

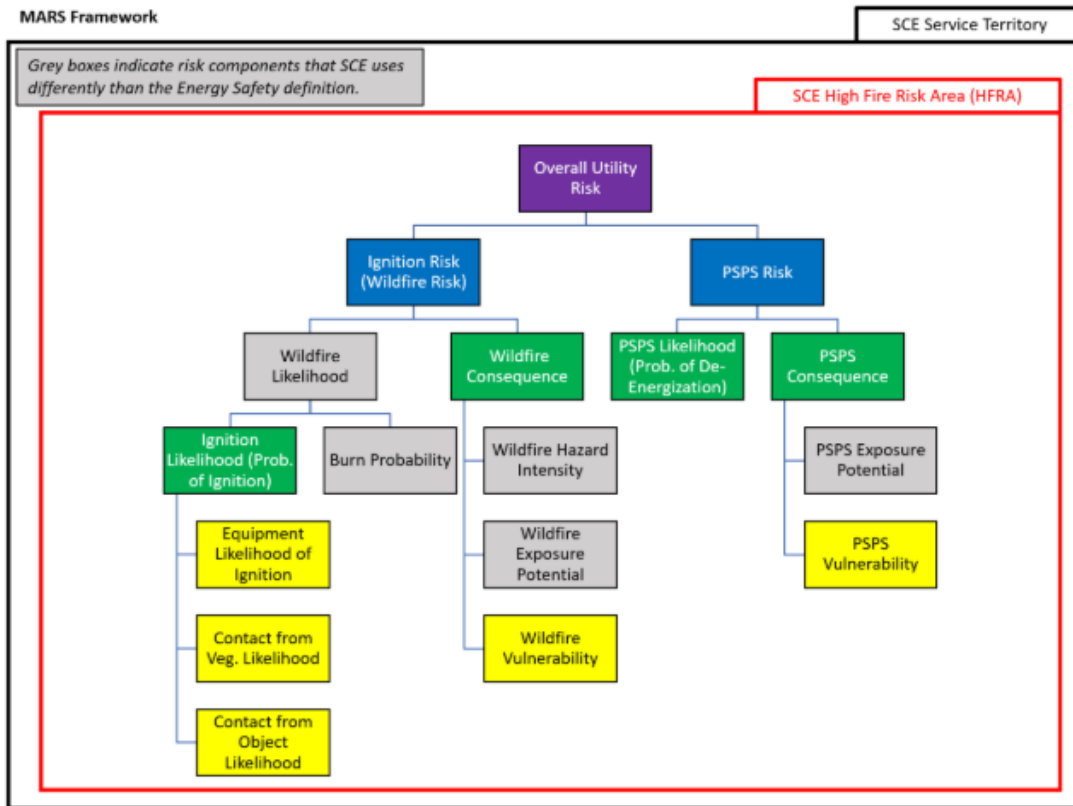
Response to Question 01:

In addition to the visual depictions included below, please see Appendix B (pgs. 689-721) of SCE's 2023-2025 Wildfire Mitigation Plan.¹

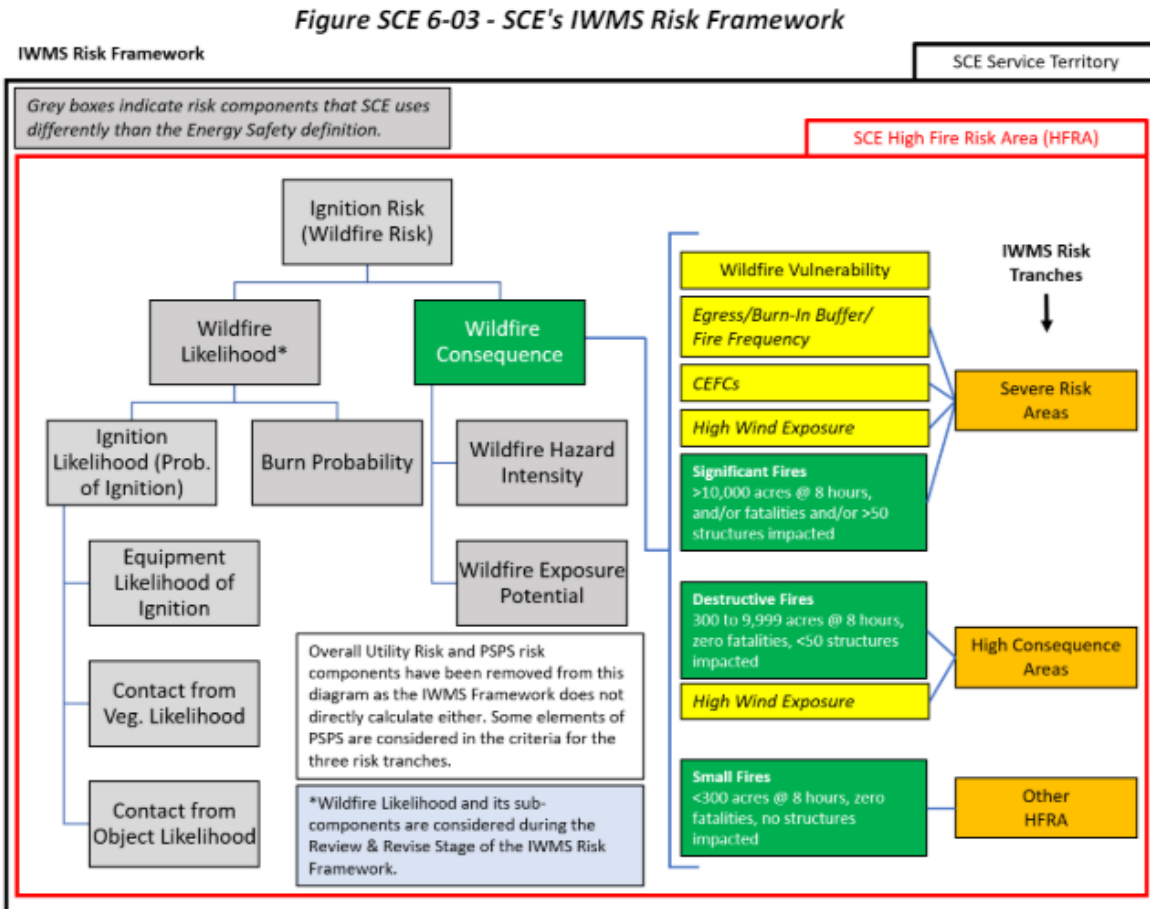
¹ See Appendix B in Southern California Edison Company's 2023-2025 Wildfire Mitigation Plan (April 2, 2024 version update), available at <https://www.sce.com/safety/wild-fire-mitigation>

See Figure 6-01, Section 6 (pg. 99) of SCE's 2023-2025 Wildfire Mitigation Plan (below):

Figure SCE 6-01 - SCE's MARS Framework



See Figure 6-03, Section 6 (pg. 102) of SCE’s 2023-2025 Wildfire Mitigation Plan (below):



See Figures 6-19 and 6-20, Section 6 (pg. 125) of SCE’s 2023-2025 Wildfire Mitigation Plan (below):

Figure SCE 6-19 - Schematic for Individual SCE Probability of Ignition Subcomponent Models

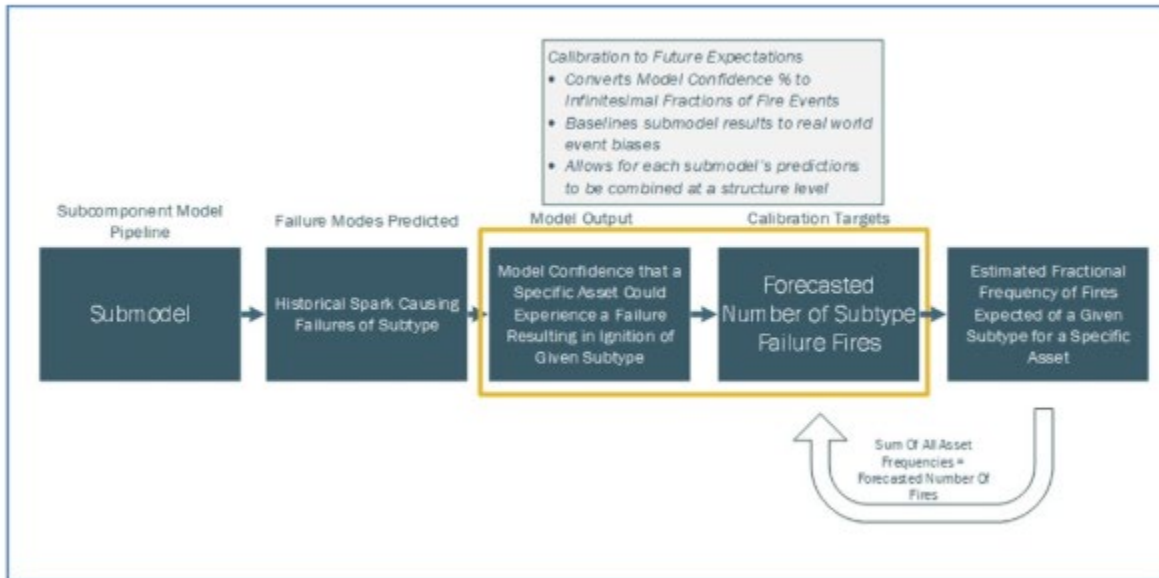
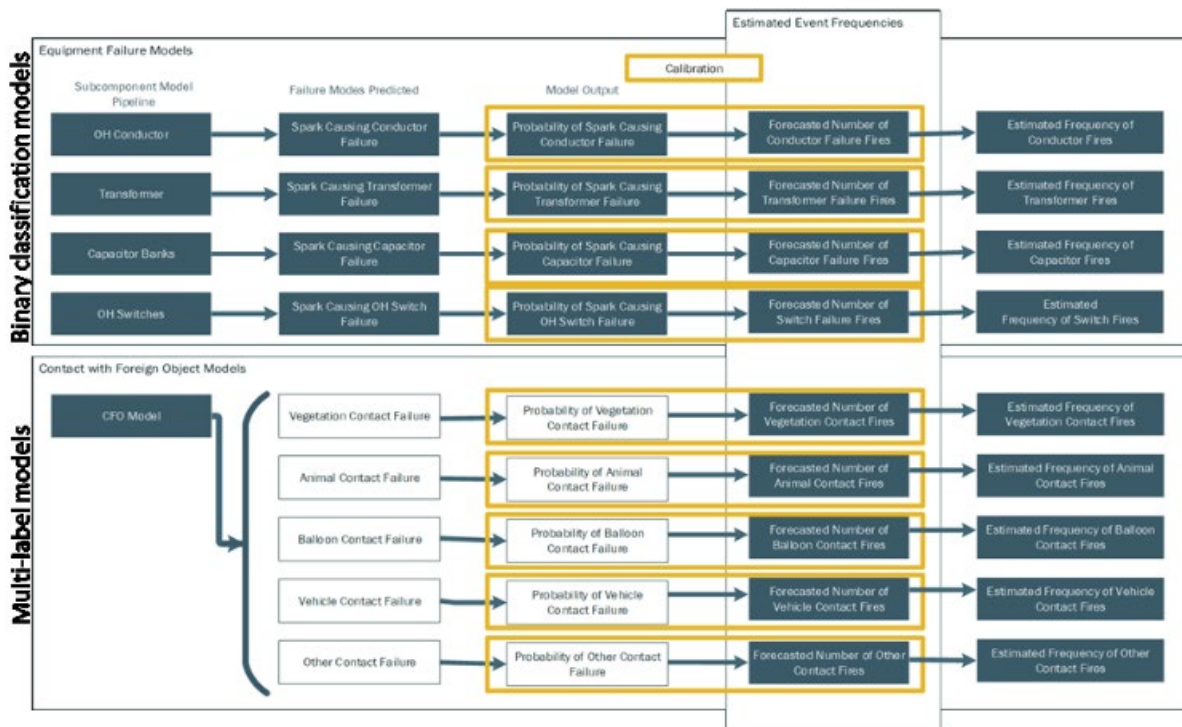
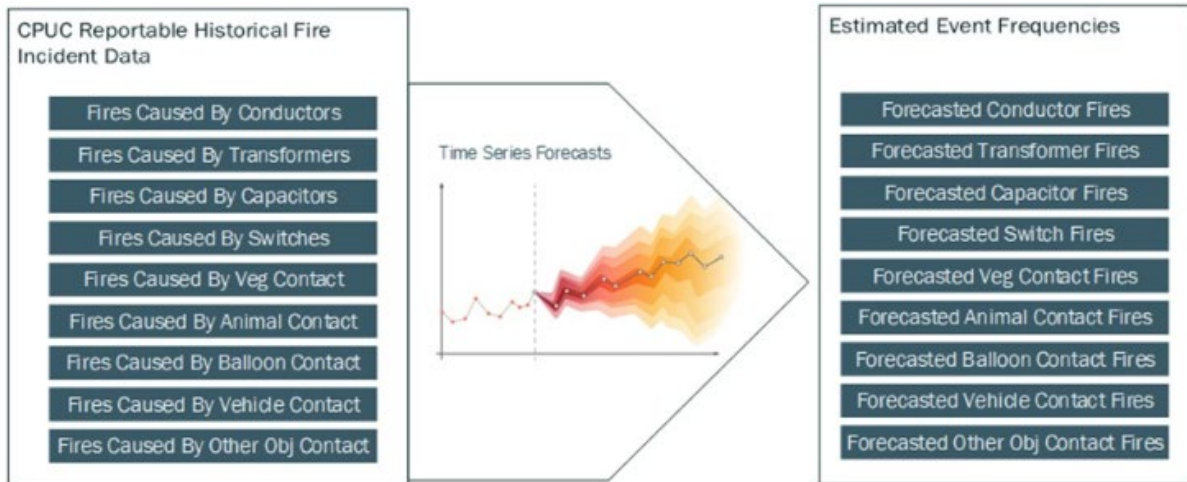


Figure SCE 6-20 - Schematic for SCE Probability of Ignition Model



See Figure 6-21, Section 6 (pg. 126) of SCE's 2023-2025 Wildfire Mitigation Plan (below):

Figure SCE 6-21 - Schematic of POI Subcomponent Model Calculation



See Figure 6-26, Section 6 (pg. 132) of SCE's 2023-2025 Wildfire Mitigation Plan (below):

Figure SCE 6-26 - Schematic of SCE Wildfire Consequence Modeling (8 hours, unsuppressed)

