



Five Minute Meeting:

Topic: Two New Distribution Bulletins

Date: January 31, 2024

Audience: All VMI Co-workers

The key thing you need to know

Two new bulletins have been released as part Distribution Inspection Procedure and became effective January 30th.

The two bulletins:

- **TD-7102P-01-B035 Vegetation Management Distribution Inventory Point**
 - **Main Item:** Additional item to consider as part of “Requirements while in the field”
- **TD-7102P-01-B036 Vegetation Management Distribution Inspection Records**
 - **Main Item:** In support of the Wildfire Mitigation Plan (WMP) objective (VM-19), new requirement to document reasons for removals within system of record.

These documents are available on TILViewer and the Core Share app.

Why it matters to you

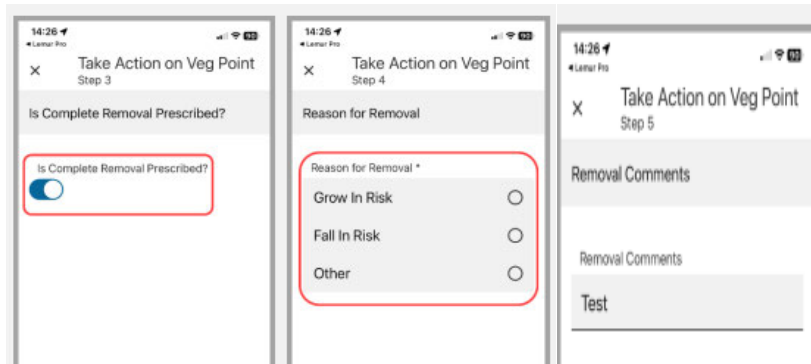
TD-7102P-01-B035 Distribution Inventory Point

- Additional requirement added to Section 2 “Requirements while in the Field” to include **EVALUATE** vegetation points with historical prescribed work, historical outages, and actively prescribed work during the **Level 1 inspection**.
- These vegetation points may have paint dots or visible signs of prior pruning. Additionally various databases are available to identify previous outages and prescriptions. Please work with your leadership for access.

TD-7102P-01-B036 Distribution Inspection Records

- Additional requirement added to Section 4.1 “Prescribing Work”, in support of the Wildfire Mitigation Plan (WMP) objective (VM-19).
- When selecting a “Prescription Action” resulting in a tree take down (removal), VMI **MUST** select a choice in the Reason for Removal field.
- VMI must also DOCUMENT the reason for prescribing for removal in the “Removal Comments” field. Where possible, reasons should align with Appendix B of the Distribution Inspection Procedure TD-7102P-01.

INTERNAL



Key discussion points

- Entering tree removal comments to comply with Wildfire Mitigation Plan (WMP) objective (VM-19) that allows for increased documentation describing why a tree was taken down.
- Take down reasons are part of our greater overall commitment to provide more transparency to our work.
- These fields are not visible to tree crews. Data is used in the back office.
- Considering historical vegetation work and outages helps inform our Level 1 inspections.

Who do I contact with questions

Please contact [REDACTED] or [REDACTED]