



---

# CA PSPS Event/Watch Event

## Sept 2020

Incident Summary, After-Action Report

---

Pacific Power

Incident Start Date 09/13/2020

Report submitted by:

Jeff Bolton

Emergency Manager

**TABLE OF CONTENTS**


---

Event Summary .....	3
Notification .....	4
September 13, 2020, PSPS Activation Event .....	4
September 17, 2020, PSPS Watch Event .....	4
Vegetation Crew Statistics .....	5
Response .....	5
Evacuation.....	6
Recovery .....	6
Summary by Department .....	7
T&D.....	7
System Operations.....	10
Customer Service .....	11
External Communications .....	12
Information Technology.....	13
Lessons Learned.....	14
Successes .....	14
Observations.....	14
After-Action Report (AAR).....	15
Assignment of Actions .....	15
<b>APPENDICES 16</b>	
<u>Appendix A</u>	
Report Contributions .....	58

**EVENT SUMMARY**


---

On September 13, 2020, PacifiCorp activated the company’s first PSPS event in the city of Weed, located in Siskiyou County due to forecasted high winds, low humidity and dry conditions. In addition, fire suppression resources were currently under extreme stress due to west-coast-wide fires being battled. The de-energization event impacted 2,557 customers and began at 10:01 a.m., with power restored to customers at 5:50 p.m. on the same day, with no incident.

On September 17, 2020, PacifiCorp initiated a PSPS watch event for 2:00-6:00 p.m., as the company closely monitored weather conditions in the city of Weed, potentially impacting 2,557 customers. As outlined above, forecasts prepared as early as September 10 indicated that fire weather conditions were expected to be elevated on September 13. However, until forecasts were received detailing wind and gusts for the time period of September 12 and 13, there was elevated fire risk, but not at a level to suggest utility ignition risk from potential wind-borne objects or vegetation. On September 11, these conditions were forecasted to change on September 13, resulting in ignition probability simultaneous with elevated fire 4 weather and fuel dryness. From September 14-16, minor abatement of the elevated wind and fire weather occurred, but on September 17 sudden changes in forecast wind gusts and fire weather resulted in a PSPS watch notification. Ultimately, favorable weather conditions did not require de-energization of lines during this period.

PacifiCorp was concerned that weather and climatic conditions posed a risk of ignition that would quickly be spread beyond control, particularly due to the depletion of local fire suppression resources that were currently supporting fire response efforts elsewhere. During this time in northern California a number of fires were being fought, while in Oregon more than a handful of extremely large fires were being fought. Local public safety partners expressed concern for their ability to lend rapid support, should ignition occur. Communication with these partners, in addition to feedback provided by Cal OES, CalFIRE and community leaders indicated limited local safety risks, once relocation of Slater Fire evacuees was accommodated.

The table below shows the number of affected customers, broken down by residential, medical baseline, commercial/ industrial, and other during the September 13 PSPS event.

<b>CIRCUIT ID</b>	<b>TOTAL # CUSTOMERS OUT</b>	<b>RESIDENTIAL</b>	<b>COMMERCIAL/ INDUSTRIAL</b>	<b>MEDICAL BASELINE</b>	<b>OTHER</b>
<b>5G45</b>	<b>581</b>	444	135	2	0
<b>5G83</b>	<b>1,976</b>	1,693	263	3	17

## NOTIFICATION

---

### **SEPTEMBER 13, 2020, PSPS ACTIVATION EVENT**

At approximately 1:30 p.m. on September 11, 2020, PacifiCorp began notifying affected customers of a potential PSPS event anticipated to take place on September 13. Outreach began with telephone calls from company personnel to public safety officials, community partners, critical customers and medically sensitive customers. In addition, notification emails were sent to regulators.

After these individual calls were completed, automated outbound calls, emails and text messages were sent to all customers, followed by updates to the company website and a media release. The following subsequent notifications were sent to all affected customers via automated outbound calls, text messaging, social media, and media advisory releases. In addition, customers which were directly contacted the prior day, and requested follow up phone calls were contacted again with a direct phone call.

- On September 12, customers were updated on the status of the impending PSPS event for September 13.
- At 8:00 a.m. September 13, the first notice of the upcoming de-energization was given, stating that power would be de-energized to customers beginning at 10:00 a.m. lasting till approximately 8:00 p.m.
- At 9:00 a.m. on September 13, a second de-energization notice was given, stating that power would be de-energized to customers beginning at 10:00 a.m. lasting till approximately 8:00 p.m.
- At 10:00 a.m. on September 13, customers received notification that their power had been de-energized.
- At 5:00 p.m. on September 13, customers received notification that power restorations would begin.
- At 7:00 p.m. on September 13, customers received a notification that all power restorations had been completed.

### **SEPTEMBER 17, 2020, PSPS WATCH EVENT**

At approximately 10:15 a.m. on September 17, 2020, PacifiCorp began notifying affected customers of the potential PSPS event for later that afternoon from 2 p.m. to 6 p.m. Outreach began with personal phone calls to public safety officials, community partners, critical customers and medically sensitive customers. In addition, notification emails were sent to regulators.

After individual calls were completed automated outbound calls, emails and text messages were sent to all customers, followed by updates to the company website and a media release. The following subsequent notifications were sent via automated outbound calls, text messaging, social media, and media releases.

At 2:00 p.m. on September 17, customers were updated on the continuation of the PSPS watch.

At 6:00 p.m. on September 17, customers were notified of the closure of the PSPS watch.

### **VEGETATION CREW STATISTICS**

On September 12, vegetation inspectors began inspecting the lines. Vegetation inspectors identified 22 locations where vegetation management actions were implemented during this event. None of the 22 locations were identified as immediate hazards; however all were addressed during this event in accordance with PacifiCorp's specifications.

Once all the vegetation issues were resolved, crews remained on site for the duration of the event and during the re-energization period to provide assistance, inspection, and clearing of any vegetation debris from lines with the re-energization process.

### **RESPONSE**

---

Starting on Thursday, September 10 and Friday, September 11, line crews began patrolling the watch area of the Weed PSPS for any emergent issues to address prior to the circuit's period of elevated risk. During these inspections no fire threat conditions were found. Throughout the event on Sunday, September 13, line crews continued to patrol the affected area, recording wind observations, submitting weather observations, videos, and pictures of the current conditions.

Once winds calmed and the weather forecasts and actual measurements indicated a reduction in wind gusts below threshold levels, a final inspection of the de-energized circuits was performed in sections and power was gradually restored to all customers as line sections were confirmed undamaged. A total of 14 linemen and two local managers assisted during the event. In addition to line crews, nine contract vegetation crews and four vegetation inspectors, totaling 22 personnel, were dispatched to the PSPS area.

The follow list outlines the key criteria including long-term drying, fire weather metrics and wind speed in the vicinity of the de-energized circuits as reviewed in the decision to de-energize for public safety:

- Keetch Byram Drought Index in excess of threshold value: 622.2
- Fosberg Fire Weather Index (averaged over 6 hours) in excess of threshold value: 30
- Wind gusts in excess of threshold value: 31 mph
- Vapor pressure deficit at or above 97% historical fire season levels

In addition, the decision is further informed by certain external issues, such as:

- Red flag warnings
- Availability of fire suppression resources

- Input received about need for electric supply to support key public safety partner locations
- Observer input regarding weather impacts to electrical equipment and positioned at key risk locations
- Input regarding any observed precipitation (or other meteorological input) that could indicate limits to fire spread risks

On September 17, similar resources and process was undertaken during the period of elevated risk, which remained at an external watch status. For instance, inspection, placing reclosing equipment in non-reclose setting mode and strategic siting and weather monitoring occurred, and as the elevated winds abated the system was placed back to normal and field teams returned to regular duties.

During the September 13, 2020 activation and September 17, 2020 watch events, the company compared in real time against gusts and Fosberg Fire 5 Weather Index (both instantaneous and 6 hour average) to establish that the elevated risk period had passed.

## **EVACUATION**

---

Due to the short duration of the event, no Community Resource Centers were opened or evacuations ordered. The company was made aware by CalFIRE that 70 evacuees from Happy Camp were in the area and Cal OES made alternate arrangements for them.

## **RECOVERY**

---

The company did not identify any equipment that was damaged during the September 13 event. Lineman and vegetation crews were onsite prior to and during the event inspecting equipment and surrounding vegetation, clearing vegetation and repairing areas where possible issues could arise. Pre-energization inspections did reveal vegetation contact at one location, pictured below:



As soon as de-energization occurred, micro-sectionalization took place, which included opening appropriate line fuses, operating line reclosers and switches and lifting jumpers.

Upon wind abatement, section by section patrols were undertaken, generally working from the substation out to the next sectionalizing device (be it line fuse, switch, recloser or jumper). When the patrols for that section was completed and confirmed, switching operations took place energizing that patrolled section. This process was conducted in parallel with multiple field teams to ensure rapid restoration of all segments. Thereafter, reclosers and substation relays were put back into normal protective settings modes.



## **SUMMARY BY DEPARTMENT**

---

### **T&D**

Given the location and speed of forecasted wind gusts on September 13, in addition to the recent fires in the area, PacifiCorp, made the decision not to micro-sectionalize the two circuits located in the Weed PPS area. Upon de-energization however, local personnel reconfigured equipment to enable stage restoration after winds abated; with these actions rapid restoration was able to be accommodated.

During the PPS watch event which occurred on September 17, micro-sectionalization was considered, in order to limit the effected customers from 2,557 customers to approximately 600 customers. This was to be accomplished by the operation of locally sited reclosers and line fuses.

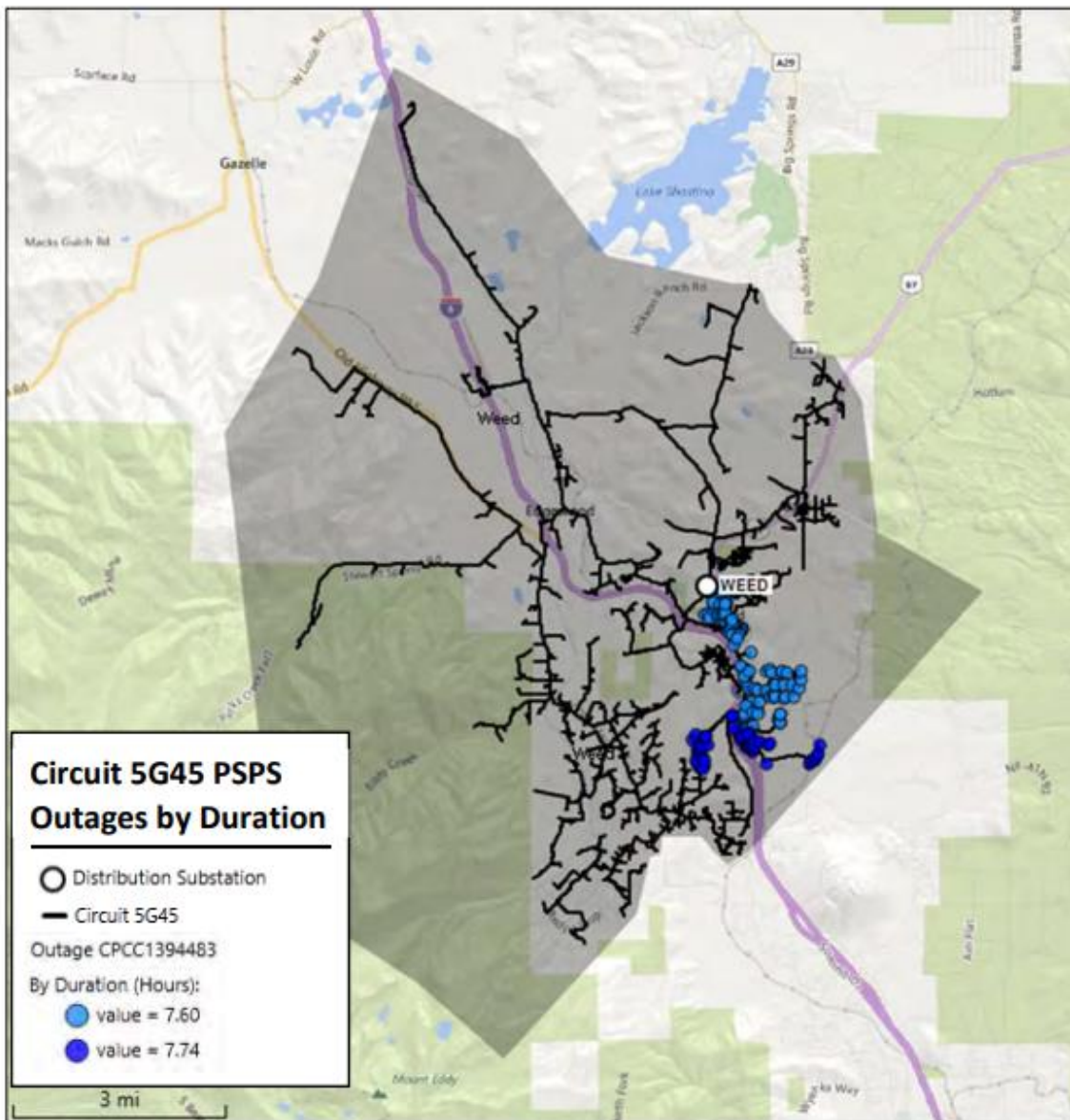
Crews patrolled the risk area and turned off auto reclosing on circuits for the duration of the high wind forecast period. Vegetation crews had also inspected and cleared any potential issues in preparation for the previous event on September 13, but reinspected in advance of the external watch on September 17. In the end wind gusts remained at the low threshold and therefore the company did not de-energize.



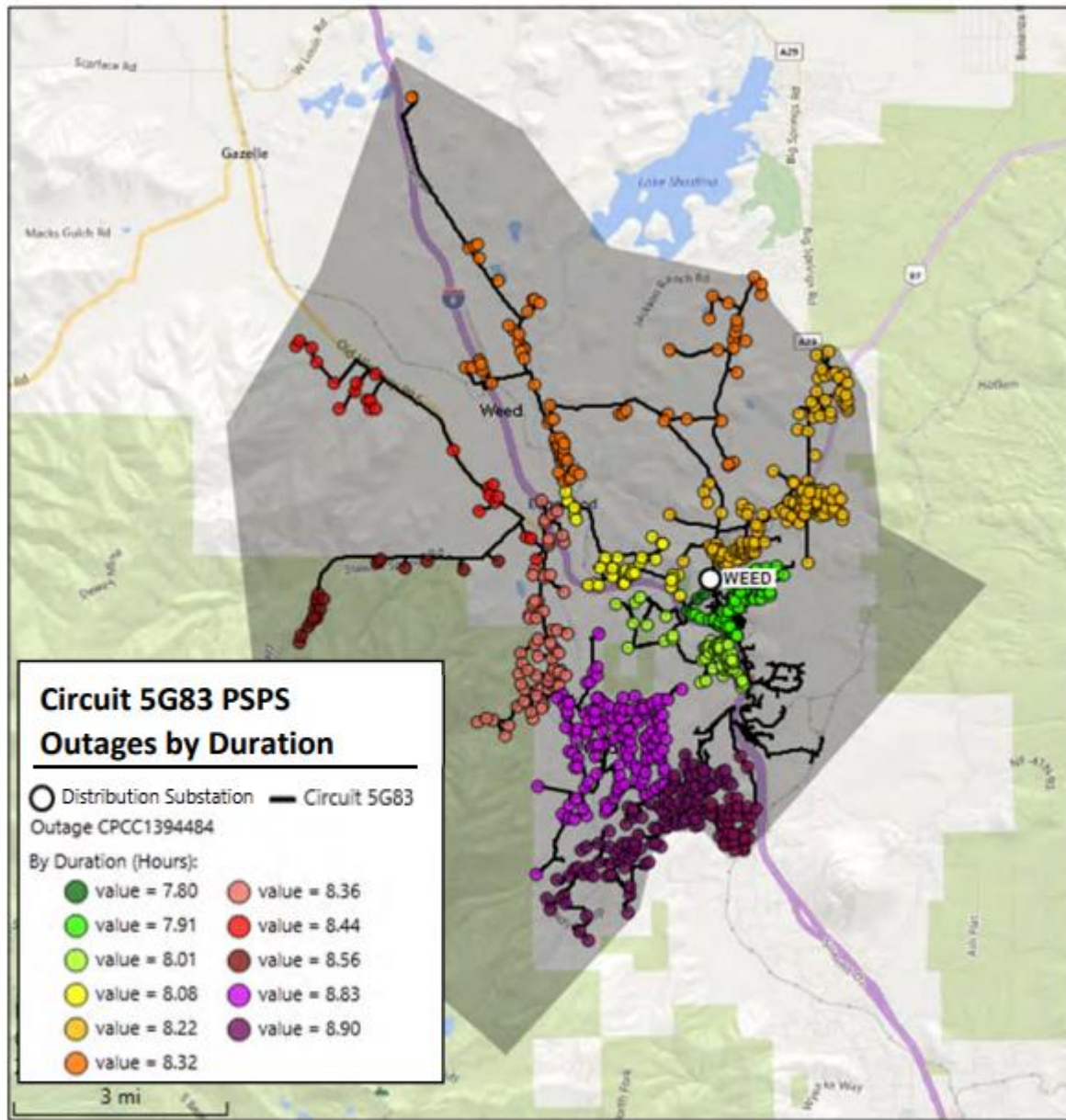
The table below provides an overview of the location, duration, and the de-energized area classified as Zone 1, Tier 2, or Tier 3 per the definition in General Order 95, Rule 21.2-D.

<b>Circuit ID</b>	<b>Communities/Location</b>	<b>Start Date and Time</b>	<b>Full Circuit Restoration Date and Time</b>	<b>GO 95, Rule 21.2 – D Classification</b>
5G45	East of S Weed Blvd. See Figure 1	9/13/2020 10:01 a.m.	9/13/2020 5:38 p.m.	Tier 2/Tier 3
5G83	West of S Weed Blvd./Edgewood/ Carrick/South Shastina Lake See Figure 2	9/13/2020 10:01 a.m.	9/13/2020 5:50 p.m.	Tier 2/Tier 3/ FHCA

The map (Figure 1) below shows the location and duration of customers who experienced de-energization.



*Figure 1. Circuit 5G45 PSPS transformer outages by duration.*



*Figure 2. Circuit 5G83 PPS transformer outages by duration.*

**SYSTEM OPERATIONS**

Official forecasts from the National Weather Service included a Red Flag Warning for critical fire weather conditions and the potential for elevated winds (both gusts and sustained) in the wind prone areas of eastern Siskiyou County. Forecasters retained by PacifiCorp also identified that gusts, in combination with elevated fire weather conditions (as measured by Fosberg Fire Weather Index (FFWI)) in combination with long term dryness, as measured by the Keetch Byrum Drought Index (KBDI) suggested that exceedance of all thresholds concurrently could occur.

**CUSTOMER SERVICE**

The below table is a list of the priority customer and partner notifications of a PSPS, which occurred prior to the public notification of PSPS watch. The table outlines the customer, the type or title of contact, and the initial date and timeframe a Pacific Power employee directly contacted them with information regarding the PSPS watch event. Individual follow up calls were provided throughout the event based on request during initial contact.

September 13, 2020 PSPS Event		
Customer	Customer Type/Title	Dates Contacted by PacifiCorp Personnel
CAL OES	Cal OES Warning Center	9/11/2020 1:30 p.m.
Cal FIRE	Cal Fire utility Liaison	Contacted Via CalOES Warning Center
CPUC - SED	SED Director-emailed	9/11/2020 1:30 p.m.
CPUC - WSD	WSD Director-emailed	9/11/2020 1:30 p.m.
Siskiyou County	County Emergency Manager <sup>1</sup>	9/11/2020 1:30 p.m.
Siskiyou County	County Supervisor –text message	9/11/2020 2:00 p.m.
Weed High School	Front Office <sup>2</sup>	9/11/2020 2:00 p.m.
College of the Siskiyou's	Facility Manager	9/11/2020 2:00 p.m.
Local Business - manufacturing	Manager	9/11/2020 2:00 p.m.
Local Business - manufacturing	General Manager	9/11/2020 2:00 p.m.
Mercy Med Center Mt. Shasta	Director	9/11/2020 2:00 p.m.
Nursing Home	Manager	9/11/2020 2:00 p.m.
Weed City – Sewer, Water, and Waste Management	Public Works Manager	9/11/2020 2:00 p.m.
Child Care Facility	Private Individual	9/11/2020 3:00 p.m.
Private Individual	Medically Sensitive	9/11/2020 3:00 p.m.
Private Individual	Medically Sensitive	9/11/2020 3:00 p.m.
Private Individual	Medically Sensitive	9/11/2020 3:00 p.m.
Private Individual	Medically Sensitive	9/11/2020 3:00 p.m.
Private Individual	Medically Sensitive-left voicemail	9/11/2020 3:00 p.m.
Nextel Communication	Network operations Center - message	9/11/2020 4:00 p.m.
Northland Cable TV Mt Shasta	Operations Manager	9/11/2020 4:00 p.m.
Pacific Bell	Director Regulatory	9/11/2020 4:00 p.m.
T Mobile WEST	Network operations Center - message	9/11/2020 4:00 p.m.
US Cellular	Network operations Center - various people	9/11/2020 4:00 p.m.
Verizon Wireless	Network operations Center - various people	9/11/2020 4:00 p.m.
WorldCom network the Services	Network operations Center - message	9/11/2020 4:00 p.m.

<sup>1</sup> Siskiyou County Manager was provided direct notified of the PSPS and its status throughout the event on September 11, 12 and 13. The County Manager directly contacted state organizations and local businesses within in the PSPS area.

<sup>2</sup> Weed High School's front office was notified of the PSPS event on September 11, and sent emails to Butteville Union School and Weed Elementary School.

September 17, 2020 PSPS Watch Event		
Customer	Customer Type/Title	Dates Contacted by PacifiCorp Personnel
CAL OES	Cal OES Warning Center	9/17/2020 10:30 a.m.
Cal FIRE	Cal Fire utility Liaison	Contacted Via CalOES Warning Center
CPUC - SED	SED Director-emailed	9/17/2020 10:30 a.m.
CPUC – PSPS Notification	Emailed	9/17/2020 10:30 a.m.
Siskiyou County	County Emergency Manager <sup>3</sup>	9/17/2020 10:30 a.m.
Siskiyou County	County Supervisor –text message	9/17/2020 10:30 a.m.
Weed High School	Front Office <sup>4</sup>	9/17/2020 10:45 a.m.
College of the Siskiyou's	Facility Manager	9/17/2020 10:45 a.m.
Local Business - manufacturing	Manager	9/17/2020 10:45 a.m.
Local Business - manufacturing	General Manager	9/17/2020 10:45 a.m.
Mercy Med Center Mt. Shasta	Director	9/17/2020 10:45 a.m.
Nursing Home	Manager	9/17/2020 10:30 a.m.
Weed City – Sewer, Water, and Waste Management	Public Works Manager	9/17/2020 10:45 a.m.
Child Care Facility	Private Individual	9/17/2020 10:30 a.m.
Private Individual	Medically Sensitive	9/17/2020 10:30 a.m.
Private Individual	Medically Sensitive	9/17/2020 10:30 a.m.
Private Individual	Medically Sensitive	9/17/2020 10:30 a.m.
Private Individual	Medically Sensitive	9/17/2020 10:30 a.m.
Private Individual	Medically Sensitive-left voicemail	9/17/2020 10:30 a.m.
Nextel Communication	Network operations Center - message	9/17/2020 10:30 a.m.
Northland Cable TV Mt Shasta	Operations Manager	9/17/2020 10:30 a.m.
Pacific Bell	Director Regulatory	9/17/2020 10:30 a.m.
T Mobile WEST	Network operations Center - message	9/17/2020 10:30 a.m.
US Cellular	Network operations Center - various people	9/17/2020 10:30 a.m.
Verizon Wireless	Network operations Center - various people	9/17/2020 10:30 a.m.
WorldCom network the Services	Network operations Center - message	9/17/2020 10:30 a.m.

<sup>3</sup> Siskiyou County Manager was provided direct notified of the PSPS and its status throughout the day of the watch event. The County Manager directly contacted state organizations and local businesses within in the PSPS area.

<sup>4</sup> Weed High Schools front office was notified of the PSPS event, and sent emails to Butteville Union School and Weed Elementary School.

### EXTERNAL COMMUNICATIONS

All copies of all notifications provided to customers prior to, during, and upon completion of the PSPS and PSPS watch events are in Appendix A. They include the date and approximate timeframe of the notification, the method of notification and detailed information about the event. All of the notifications were initiated and completed by internal staff using outbound call,

text and email systems. Critical customers in the Customer Service tables received additional notification through a personal call or email.

Pacific Power's PSPS website which has an interactive map of the company's service territory was also updated in real time to show the status of each event. This allowed customers enter their address and see whether or not they would be impacted by the PSPS events.

## **INFORMATION TECHNOLOGY**



**LESSONS LEARNED**

---

As this was the first PSPS event PacifiCorp has conducted, it learned lessons relating to notification and documentation. Certain notification protocols had been established with other utilities and public safety partners of which the company needed to become familiar. In addition, the need for streamlining the records regarding outbound notifications were identified. Overall, the company was pleased with the execution of this event.

**SUCSESSES**

- PacifiCorp has received no customer complaints or claims related to the PSPS event which occurred on 9/13/2020 or the PSPS watch notification on 9/17/2020.
- Siskiyou County Manager made contact with several local businesses.
- Outreach and notifications began by 1330 hrs on 9/11/2020 in advance of the potential PSPS event on 9/13/2020 and 9/17/2020.
- Throughout the event, customer service, field personnel, and management were available and responding to inquiries as they came in via phone call or on social media.

**OBSERVATIONS**

- At this time, PacifiCorp has no recommendations related to guidelines that have been adopted during the development of PSPS protocols.

◆◆◆

**AFTER-ACTION REPORT (AAR)**


---

The actions identified below are based input received from those that participated in the event. The following actions correlate to observations and issues identified on page 15.

**ASSIGNMENT OF ACTIONS**

ID	Action Item/Recommendation	Type	Responsible Person(s)	Due Date
1	<ul style="list-style-type: none"> <li>Need to familiarize EM staff with the other utility and Public Safety Partners notification protocols</li> </ul>	Notification	<ul style="list-style-type: none"> <li>Jeff Bolton</li> </ul>	Not set
2	<ul style="list-style-type: none"> <li>Streamlining records regarding outbound notifications</li> </ul>	Documentation	<ul style="list-style-type: none"> <li>Jeff Bolton</li> </ul>	Not set

**Note:** “Responsible Person(s)” will track the assignment to completion; however, may task others to perform the actual work.

**APPENDICES**

---

**APPENDIX A – CUSTOMER / MEDIA NOTIFICATIONS****Public Safety Power Shutoff – Areas near Weed, Calif.**  
**Watch Notification****9/11/2020, 1:30 p.m. - 5:30 p.m.****Phone and Email Script**

Hello this is Pacific Power with an important safety message. We are actively monitoring changing weather conditions in the Weed area. Higher winds are in the forecast for Sunday which might require a Public Safety Power Shutoff.

Higher winds combined with low humidity and dry conditions can result in flying debris coming in contact with power lines and escalating wildfire risk. We will continue to monitor these conditions and will provide updates should we need to issue a Public Safety Power Shutoff in your area.

For more information please visit [pacificpower.net/psps](http://pacificpower.net/psps) or call our customer care team at 1-888-221-7070.

We appreciate your attention. Thank you.

Puede hablar con un agente de servicio al cliente sobre cómo prepararse y qué medidas de seguridad tomar para los incendios forestales. Llame al 888-221-7070.

请致电 888-221-7070，向客服专员了解森林火灾安全与防范详情。

請致電 888-221-7070，向客服專員瞭解森林火災安全與防範詳情。

Unsere Mitarbeiter im Kundenservice beraten Sie gerne zu Waldbrandvorsorge und -bekämpfung. Sie erreichen uns unter 888-221-7070.

Lub chaw sawv cev saib xyuas tub lag luam yuav sib tham nrog koj txog ntawm kev nyab xeeb txog hluav taws hav zoov kub thiab kev npaj txhij. Thov hu rau 888-221-7070.

Ang isang ahente ng pangangalaga sa customer ay maaaring makipag-usap sa iyo tungkol sa kaligtasan at paghahanda sa mabilis na kumakalat na sunog o wildfire. Mangyaring tumawag sa 888-221-7070.

Một đại diện chăm sóc khách hàng có thể trao đổi với quý vị về an toàn cháy rừng và cách chuẩn bị sẵn sàng cho cháy rừng. Vui lòng gọi 888-221-7070.



Whak nheo bene llun xhinlago nha nhelee, akre unha lkues nha bii llaxgenha dá ghapchi nhada kate xde yii lixhe. Nheo: 888 221 7070

Kui kan'ani xi na'I kaston'o sa'a ña kutua'ani te ña kui kidani ta kiño'o yuku yoton, kan'ani 888-221- 7070.

### **Text Message**

Pacific Power is monitoring forecasted high winds for Sunday in Weed. Additional info at [pacificpower.net/psps](http://pacificpower.net/psps).

### **Media Advisory**

Contact:  
Pacific Power media line  
503-813-6018

FOR IMMEDIATE RELEASE  
September 11, 2020

## **Pacific Power closely monitoring Weed, Calif. area for wildfire risk and possible Public Safety Power Shutoff**

*Weather forecast for Sunday is being monitored for possible de-energization of power lines in designated high fire risk areas*

WEED, Calif. — Pacific Power is closely monitoring weather conditions in Weed, Calif., which is considered a high fire risk area, and may issue a Public Safety Power Shutoff (PSPS) Sunday, September 13th beginning late morning extending into the early evening.

The measure is a proactive effort to mitigate wildfire risk in the face of hazardous fire weather conditions including extremely low humidity, dry vegetation, elevated levels on key weather indexes and sustained winds and gusts. Current forecasts indicate PSPS conditions could be met Sunday, September 13th beginning late morning extending into the early evening. Although the entirety of the Weed area has entered a PSPS watch, a section between north Weed and Lake Shastina is of particular concern.

“We are doing all that we can to protect our customers and communities during this time of historic weather conditions and wildfires affecting the regions we serve,” said Jeff Bolton, emergency manager. “For high-risk areas, a Public Safety Power Outage is one way we can help ensure safety, along with work we already do to de-energize lines and make repairs to aid emergency responders.”

Approximately 2,500 customers in Weed could be affected. Those customers have been notified of the watch through phone calls, email and text messages. Affected customers will continue to receive updates through ongoing communications. Customers can use the interactive map at [www.pacificpower.net/psps](http://www.pacificpower.net/psps) to see if they are located in a PSPS area. Customers are encouraged to be prepared and have an outage kit ready.

**For all non-emergency questions about the PSPS, customers and the public should call Pacific Power at 1-888-221-7070.**

Turning off power during a Public Safety Power Shutoff is done to prevent wind-blown or falling debris from making contact with energized power lines. Pacific Power crews will actively patrol and remove debris from lines and make repairs if needed. Once line inspections are complete and extreme weather conditions have subsided, Pacific Power will re-energize the lines.

Visit [pacificpower.net/psps](https://pacificpower.net/psps) for additional information on Public Safety Power Shutoffs, wildfire safety and emergency preparedness.

Puede hablar con un agente de servicio al cliente sobre cómo prepararse y qué medidas de seguridad tomar para los incendios forestales. Llame al 888-221-7070.

请致电 888-221-7070，向客服专员了解森林火灾安全与防范详情。

請致電 888-221-7070，向客服專員瞭解森林火災安全與防範詳情。

Unsere Mitarbeiter im Kundenservice beraten Sie gerne zu Waldbrandvorsorge und -bekämpfung. Sie erreichen uns unter 888-221-7070.

Lub chaw sawv cev saib xyuas tub lag luam yuav sib tham nrog koj txog ntawm kev nyab xeeb txog hluav taws hav zoov kub thiab kev npaj txhij. Thov hu rau 888-221-7070.

Ang isang ahente ng pangangalaga sa customer ay maaaring makipag-usap sa iyo tungkol sa kaligtasan at paghahanda sa mabilis na kumakalat na sunog o wildfire. Mangyaring tumawag sa 888-221-7070.

Một đại diện chăm sóc khách hàng có thể trao đổi với quý vị về an toàn cháy rừng và cách chuẩn bị sẵn sàng cho cháy rừng. Vui lòng gọi 888-221-7070.

Whak nheo bene llun xhinlago nha nhelee, akre unha lkues nha bii llaxgenha dá ghapchi nhada kate xde yii lixhe. Nheo: 888 221 7070

Kui kan'ani xi na'I kaston'o sa'a ña kutua'ani te ña kui kidani ta kiño'o yuku yoton, kan'ani 888-221- 7070.

**Social Media** (Facebook, Instagram, Twitter) 9/11/2020, 5:15 p.m.

We are closely monitoring weather conditions in Weed, Calif., which is considered a high fire risk area, and may need to issue a Public Safety Power Shutoff on Sunday 9/13 to reduce risk and keep the community safe. Learn more at [pacificpower.net/about/newsroom/news-releases/pp-closely-monitoring-weed-calif-area-for-wildfire-risk.html](https://pacificpower.net/about/newsroom/news-releases/pp-closely-monitoring-weed-calif-area-for-wildfire-risk.html)

**Website**

Pacific Power is closely monitoring weather conditions in Weed, Calif., which is considered a high fire risk area, and may issue a Public Safety Power Shutoff (PSPS) Sunday, September 13th beginning late morning extending into the early evening.

The measure is a proactive effort to mitigate wildfire risk in the face of hazardous fire weather conditions including extremely low humidity, dry vegetation, elevated levels on key weather indexes and sustained winds and gusts. Current forecasts indicate PSPS conditions could be met Sunday, September 13th beginning late morning extending into the early evening.

**Public Safety Power Shutoff – Areas near Weed, Calif.****Update Notification**

**9/12/2020, 7:00 p.m. Notice**

**Phone Script**

9/12/2020, 7:00 p.m.

Hello, this is an important safety message from Pacific Power. Because of extreme wildfire conditions, Pacific Power will likely turn off power to approximately 2,500 customers in Weed, Calif., beginning Sunday, September 13th at 10 a.m.

Current weather forecasts include high, sustained winds, extreme drought, and low humidity which may warrant a Public Safety Power Shutoff. In addition, the current strain on local and regional firefighting resources is a concern. So long as forecasts are accurate, the company expects to begin the restoration process around 5 p.m. on Sunday evening, with the goal to have service returned to all customers by 8 p.m.

The affected area of Weed includes a section from just north of Black Butte, extending north to the south end of Lake Shastina, bounding on the east just west of Highway 97 west to Old Hwy 99 and Stewart Springs Road, in the areas of Weed, Hammond Ranch, Edgewood and Carrick.

Customers can use the interactive map at [www.pacificpower.net/pssp](http://www.pacificpower.net/pssp) to see if they are located in a PSPS area.

Customers are encouraged to be prepared and have an outage kit ready.

The next notification to customers of the event will happen tomorrow morning at 8 a.m.; two hours before power is turned off.

Thank you and have a great night.

**Media Advisory**

Contact:  
Pacific Power media line  
503-813-6018

FOR IMMEDIATE RELEASE  
Sept. 12, 2020

## **Pacific Power continues monitoring potential Public Safety Power Shutoff conditions for Weed, California**

*Weather forecast for Sunday is being monitored for possible de-energization of power lines in designated high fire risk areas.*

WEED, Calif. — Pacific Power continues to closely monitor weather conditions in Weed, Calif., which is considered a high fire risk area. The company may issue a [Public Safety Power Shutoff](#) (PSPS) Sunday, September 13th beginning late morning extending into the early evening due to high winds and other potential wildfire risks.

Approximately 2,500 customers in Weed could be affected. Those customers were notified yesterday of the watch through phone calls, email and text messages. Affected customers will continue to receive updates through ongoing communications. Customers can use the interactive map at [www.pacificpower.net/psps](http://www.pacificpower.net/psps) to see if they are located in a PSPS area. Customers are encouraged to be prepared and have an outage kit ready.

**For all non-emergency questions about the PSPS, customers and the public should call Pacific Power at 1-888-221-7070.**

Turning off power during a Public Safety Power Shutoff is done to prevent wind-blown or falling debris from making contact with energized power lines. Pacific Power crews will actively patrol and remove debris from lines and make repairs if needed. Once line inspections are complete and extreme weather conditions have subsided, Pacific Power will re-energize the lines.

Visit [pacificpower.net/psps](http://pacificpower.net/psps) for additional information on Public Safety Power Shutoffs, wildfire safety and emergency preparedness.

Puede hablar con un agente de servicio al cliente sobre cómo prepararse y qué medidas de seguridad tomar para los incendios forestales. Llame al 888-221-7070.

請致電 888-221-7070，向客服專員了解森林火災安全與防範詳情。

請致電 888-221-7070，向客服專員瞭解森林火災安全與防範詳情。

Unsere Mitarbeiter im Kundenservice beraten Sie gerne zu Waldbrandvorsorge und -bekämpfung. Sie erreichen uns unter 888-221-7070.

Lub chaw sawv cev saib xyuas tub lag luam yuav sib tham nrog koj txog ntawm kev nyab xeeb txog hluav taws hav zoov kub thiab kev npaj txhij. Thov hu rau 888-221-7070.

Ang isang ahente ng pangangalaga sa customer ay maaaring makipag-usap sa iyo tungkol sa kaligtasan at paghahanda sa mabilis na kumakalat na sunog o wildfire. Mangyaring tumawag sa 888-221-7070.

Một đại diện chăm sóc khách hàng có thể trao đổi với quý vị về an toàn cháy rừng và cách chuẩn bị sẵn sàng cho cháy rừng. Vui lòng gọi 888-221-7070.

Whak nheo bene llun xhinlago nha nhelee, akre unha lkues nha bii llaxgenha dá ghapchi nhada kate xde yii lixhe. Nheo: 888 221 7070

Kui kan'ani xi na'I kaston'o sa'a ña kutua'ani te ña kui kidani ta kiño'o yuku yoton, kan'ani 888-221- 7070.

**Social Media** (Facebook, Instagram, Twitter) 9/12/2020, 11:20 a.m.

We continue to monitor weather conditions in Weed, Calif., and may need to issue a Public Safety Power Shutoff on Sunday 9/13 to reduce risk and keep the community safe. Please update your contact information so we can contact you with alerts at [pacificpower.net/wildfiresafety](https://pacificpower.net/wildfiresafety)

### **Website**

#### **Weed PSPS website update 9/12/2020 7pm**

Because of extreme wildfire conditions, Pacific Power will likely turn off power to approximately 2,500 customers in Weed, Calif., beginning Sunday, September 13th at 10 a.m.

Current weather forecasts include high, sustained winds, extreme drought, and low humidity which may warrant a Public Safety Power Shutoff. In addition, the current strain on local and regional firefighting resources is a concern. High winds are forecasted to remain in the area into the early evening. So long as forecasts are accurate, the company expects to begin the restoration process around 5 p.m. on Sunday evening, with the goal to have service returned to all customers by 8 p.m.

The affected area of Weed includes a section from just north of Black Butte, extending north to the south end of Lake Shastina, bounding on the east just west of Highway 97 west to Old Hwy 99 and Stewart Springs Road, in the areas of Weed, Hammond Ranch, Edgewood and Carrick.

Customers are encouraged to be prepared and have an outage kit ready.

## **Public Safety Power Shutoff – Areas near Weed, Calif.**

### **Upcoming De-energization Notification 1**

**9/13/2020, 8:00 a.m. Notice**

#### **Phone and Email Script**

Hello, this is an important safety message from Pacific Power. Because of extreme wildfire conditions, Pacific Power is set to turn off power to approximately 2,500 customers in Weed, Calif., beginning today, September 13th at 10 a.m. So long as forecasts are accurate, the company expects to begin the restoration process around 5 p.m. on Sunday evening, with the goal to have service returned to all customers by 8 p.m.

The affected area includes a section from just north of Black Butte, extending north to the south end of Lake Shastina, bounding on the east just west of Highway 97 west to Old Hwy 99 and Stewart Springs Road, in the areas of Weed, Hammond Ranch, Edgewood and Carrick.

Current weather forecasts include high, sustained winds, extreme drought, and low humidity which warrants a Public Safety Power Shutoff. In addition, the current strain on local and regional firefighting resources is a concern.

You can use the interactive map at [www.pacificpower.net/psps](http://www.pacificpower.net/psps) to see if they are located in a PSPS area. We encourage you to be prepared and have an outage kit ready. The next notification of the event will happen at 9 a.m.; one hour before power is turned off.

Thank you and we appreciate your understanding and patience during this important public safety measure.

#### **Text Message**

Pacific Power will start a Public Safety Power Shutoff today at 10 a.m. More info at [pacificpower.net/psps](http://pacificpower.net/psps)

#### **Media Advisory**

Contact:  
Pacific Power media line  
503-813-6018

FOR IMMEDIATE RELEASE  
Sept. 13, 2020

## **Pacific Power to start Public Safety Power Shutoff in Weed, California at 10 a.m. PST**

WEED, Calif. — Because of extreme wildfire conditions, Pacific Power is set to turn off power to approximately 2,500 customers in Weed, Calif., beginning Sunday, September 13th at 10 a.m.

So long as forecasts are accurate, the company expects to begin the restoration process around 5 p.m. on Sunday evening, with the goal to have service returned to all customers by 8 p.m.

Current weather forecasts include high, sustained winds, extreme drought, and low humidity which may warrant a Public Safety Power Shutoff. In addition, the current strain on local and regional firefighting resources is a concern. High winds are forecasted to remain in the area into the early evening.

“The safety of the communities we serve is our highest priority,” said Erik Brookhouse, vice president of system operations. “We’re taking this extraordinary precaution because the right combination of factors for a potentially extreme and hard-to-fight fire event are present today. We take the decision to turn off power seriously. With the current weather conditions and strain on firefighting resources it’s important we act on all fire mitigation measures. We appreciate our customers understanding and patience.”

The affected area includes a section from just north of Black Butte, extending north to the south end of Lake Shastina, bounding on the east just west of Highway 97 west to Old Hwy 99 and Stewart Springs Road, in the areas of Weed, Hammond Ranch, Edgewood and Carrick.

Customers can use the interactive map at [www.pacificpower.net/psps](http://www.pacificpower.net/psps) to see if they are located in a PSPS area. Customers are encouraged to be prepared and have an outage kit ready.

Turning off power during a Public Safety Power Shutoff is done to prevent wind-blown or falling debris from making contact with energized power lines. Pacific Power crews will actively patrol and remove debris from lines and make repairs if needed. Once line inspections are complete and extreme weather conditions have subsided, Pacific Power will re-energize the lines.

The company began notifying customers about the Public Safety Power Shutoff on Friday through phone calls, email and text messages. Affected customers will continue to receive updates through ongoing communications at these estimated times:

- 9 a.m.; one hour before power is turned off
- 10 a.m.; assuming that lines are de-energized as planned
- 5 p.m.; when restoration work begins
- 8 p.m.; when restoration work concludes and service is restored to customers

These times are subject to change based on forecasted and actual weather conditions.

Pacific Power urges customers to verify their contact information is up-to-date. Customers can do this by logging into their online account at [pacificpower.net](http://pacificpower.net) or calling the customer care center at 1-888-221-7070.

**For all non-emergency questions about the PSPS, customers and the public should call Pacific Power at 1-888-221-7070.**

Puede hablar con un agente de servicio al cliente sobre cómo prepararse y qué medidas de seguridad tomar para los incendios forestales. Llame al 888-221-7070.

請致電 888-221-7070，向客服專員了解森林火災安全與防範詳情。

請致電 888-221-7070，向客服專員瞭解森林火災安全與防範詳情。

Unsere Mitarbeiter im Kundenservice beraten Sie gerne zu Waldbrandvorsorge und -bekämpfung. Sie erreichen uns unter 888-221-7070.

Lub chaw sawv cev saib xyuas tub lag luam yuav sib tham nrog koj txog ntawm kev nyab xeeb txog hluav taws hav zoov kub thiab kev npaj txhij. Thov hu rau 888-221-7070.

Ang isang ahente ng pangangalaga sa customer ay maaaring makipag-usap sa iyo tungkol sa kaligtasan at paghahanda sa mabilis na kumakalat na sunog o wildfire. Mangyaring tumawag sa 888-221-7070.

Một đại diện chăm sóc khách hàng có thể trao đổi với quý vị về an toàn cháy rừng và cách chuẩn bị sẵn sàng cho cháy rừng. Vui lòng gọi 888-221-7070.

Whak nheo bene llun xhinlago nha nhelee, akre unha lkues nha bii llaxgenha dá ghapchi nhada kate xde yii lixhe. Nheo: 888 221 7070

Kui kan'ani xi na'I kaston'o sa'a ña kutua'ani te ña kui kidani ta kiño'o yuku yoton, kan'ani 888-221- 7070.

### **Social Media** (Facebook, Instagram, Twitter)

\*\*\*WEED PSPS UPDATE 9/13 8 am\*\*\* We are closely monitoring weather conditions in Weed, Calif., and it is likely we will begin a Public Safety Power Shutoff today 9/13 at 10 AM to reduce wildfire risk and keep the community safe. Learn more at <https://www.pacificpower.net/about/newsroom/news-releases/pp-to-start-psps-inweed-calif-10-am.html>

For all non-emergency questions about the PSPS, customers and the public should call Pacific Power at 1-888-221-7070.

Puede hablar con un agente de servicio al cliente sobre cómo prepararse y qué medidas de seguridad tomar para los incendios forestales. Llame al 888-221-7070.

請致電 888-221-7070，向客服專員了解森林火災安全與防範詳情。

請致電 888-221-7070，向客服專員瞭解森林火災安全與防範詳情。

Unsere Mitarbeiter im Kundenservice beraten Sie gerne zu Waldbrandvorsorge und -bekämpfung. Sie erreichen uns unter 888-221-7070.



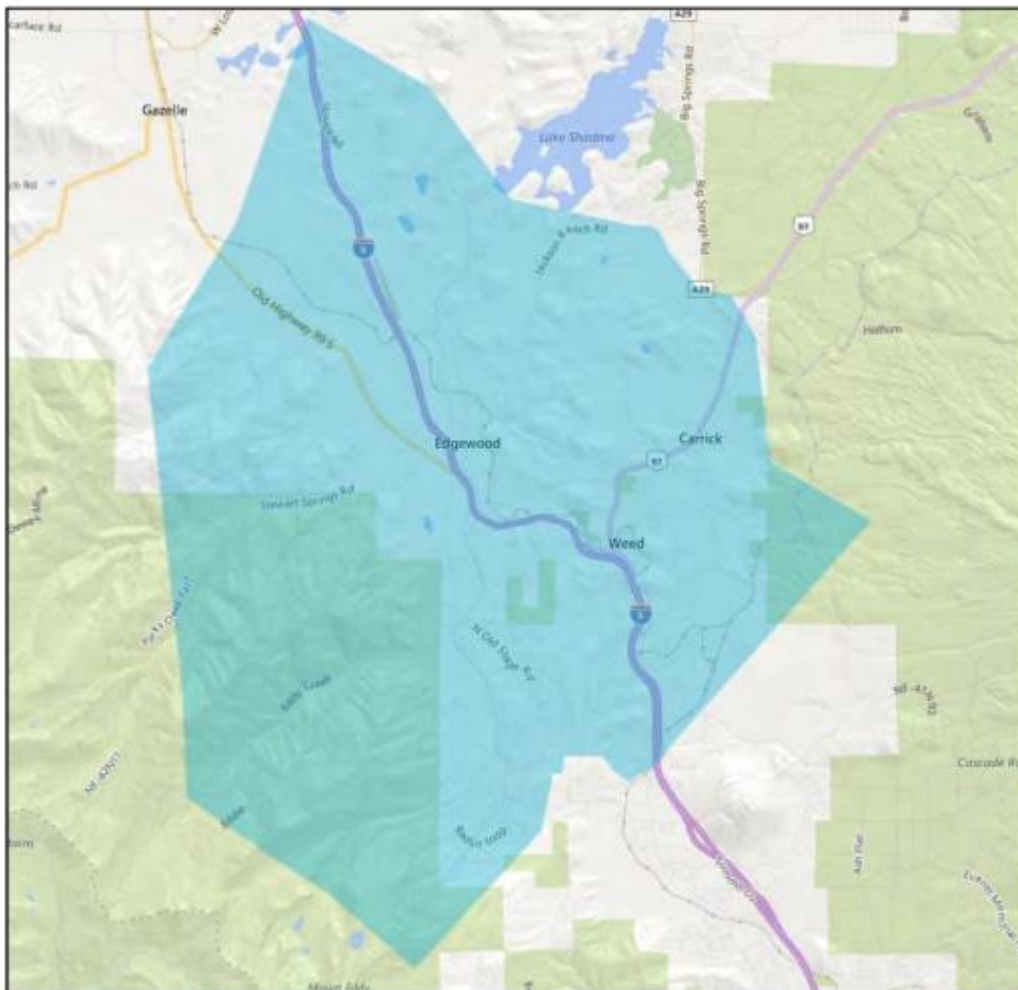
Lub chaw sawv cev saib xyuas tub lag luam yuav sib tham nrog koj txog ntawm kev nyab xeeb txog hluav taws hav zoov kub thiab kev npaj txhij. Thov hu rau 888-221-7070.

Ang isang ahente ng pangangalaga sa customer ay maaaring makipag-usap sa iyo tungkol sa kaligtasan at paghahanda sa mabilis na kumakalat na sunog o wildfire. Mangyaring tumawag sa 888-221-7070.

Một đại diện chăm sóc khách hàng có thể trao đổi với quý vị về an toàn cháy rừng và cách chuẩn bị sẵn sàng cho cháy rừng. Vui lòng gọi 888-221-7070.

Whak nheo bene llun xhinlago nha nhelee, akre unha lkues nha bii llaxgenha dá ghapchi nhada kate xde yii lixhe. Nheo: 888 221 7070

Kui kan'ani xi na'I kaston'o sa'a ña kutua'ani te ña kui kidani ta kiño'o yuku yoton, kan'ani 888-221- 7070.



**Website**

**Pacific Power to start Public Safety Power Shutoff in Weed, California at 10 a.m. PST**

Because of extreme wildfire conditions, Pacific Power is set to turn off power to approximately 2,500 customers in Weed, Calif., beginning Sunday, September 13th at 10 a.m. So long as forecasts are accurate, the company expects to begin the restoration process around 5 p.m. on Sunday evening, with the goal to have service returned to all customers by 8 p.m.

Current weather forecasts include high, sustained winds, extreme drought, and low humidity which may warrant a Public Safety Power Shutoff. In addition, the current strain on local and regional firefighting resources is a concern. High winds are forecasted to remain in the area into the early evening.

The affected area includes a section from just north of Black Butte, extending north to the south end of Lake Shastina, bounding on the east just west of Highway 97 west to Old Hwy 99 and Stewart Springs Road, in the areas of Weed, Hammond Ranch, Edgewood and Carrick.

Pacific Power urges customers to verify their contact information is up-to-date. Customers can do this by logging into their online account at [pacificpower.net](http://pacificpower.net) or calling the customer care center at 1-888-221-7070.

**Public Safety Power Shutoff – Areas near Weed, Calif.****Upcoming De-energization Notification 2****9/13/2020, 9:00 a.m. Notice****Phone and Email Script**

Hello, this is an important safety message from Pacific Power. Because of extreme wildfire conditions, Pacific Power will turn off power to approximately 2,500 customers in Weed, Calif., beginning in one hour at 10 a.m. So long as forecasts are accurate, the company expects to begin the restoration process around 5 p.m. on Sunday evening, with the goal to have service returned to all customers by 8 p.m.

The affected area of Weed includes a section from just north of Black Butte, extending north to the south end of Lake Shastina, bounding on the east just west of Highway 97 west to Old Hwy 99 and Stewart Springs Road, in the areas of Weed, Hammond Ranch, Edgewood and Carrick.

Current weather forecasts include high, sustained winds, extreme drought, and low humidity which warrants a Public Safety Power Shutoff. In addition, the current strain on local and regional firefighting resources is a concern.

You can use the interactive map at [www.pacificpower.net/psps](http://www.pacificpower.net/psps) to see if your home or business is located in a PSPS area. We encourage you to be prepared and have an outage kit ready.

The next notification of the event will happen at 10 a.m.; when power is turned off.

Thank you and we appreciate your understanding and patience during this important public safety measure.

### **Text Message**

Pacific Power will start a Public Safety Power Shutoff today at 10 a.m. More info at [pacificpower.net/psps](http://pacificpower.net/psps)

### **Media Advisory**

Contact:  
Pacific Power media line  
503-813-6018

FOR IMMEDIATE RELEASE  
Sept. 13, 2020

## **Pacific Power will begin Public Safety Power Shutoff in Weed, California today at 10 a.m. PST**

WEED, Calif. — Because of extreme wildfire conditions, Pacific Power will turn off power to approximately 2,500 customers in Weed, Calif., **beginning today, September 13th in one hour at 10 a.m.** So long as forecasts are accurate, the company expects to begin the restoration process around 5 p.m. on Sunday evening, with the goal to have service returned to all customers by 8 p.m.

Current weather forecasts include high, sustained winds, extreme drought, and low humidity which may warrant a Public Safety Power Shutoff. In addition, the current strain on local and regional firefighting resources is a concern. High winds are forecasted to remain in the area into the early evening.

“The safety of the communities we serve is our highest priority,” said Erik Brookhouse, vice president of system operations. “We’re taking this extraordinary precaution because the right combination of factors for a potentially extreme and hard-to-fight fire event are present today. We take the decision to turn off power seriously. With the current weather conditions and strain on firefighting resources it’s important we act on all fire mitigation measures. We appreciate our customers understanding and patience.”

The affected area includes a section from just north of Black Butte, extending north to the south end of Lake Shastina, bounding on the east just west of Highway 97 west to Old Hwy 99 and Stewart Springs Road, in the areas of Weed, Hammond Ranch, Edgewood and Carrick.

Customers can use the interactive map at [www.pacificpower.net/psps](http://www.pacificpower.net/psps) to see if they are located in a PSPS area. Customers are encouraged to be prepared and have an outage kit ready.

Turning off power during a Public Safety Power Shutoff is done to prevent wind-blown or falling debris from making contact with energized power lines. Pacific Power crews will actively

patrol and remove debris from lines and make repairs if needed. Once line inspections are complete and extreme weather conditions have subsided, Pacific Power will re-energize the lines.

The company began notifying customers about the Public Safety Power Shutoff on Friday through phone calls, email and text messages. Affected customers will continue to receive updates through ongoing communications at these estimated times:

- 10 a.m.; assuming that lines are de-energized as planned
- 5 p.m.; when restoration work begins
- 8 p.m.; when restoration work concludes and service is restored to customers

These times are subject to change based on forecasted and actual weather conditions. Pacific Power urges customers to verify their contact information is up-to-date. Customers can do this by logging into their online account at [pacificpower.net](http://pacificpower.net) or calling the customer care center at 1-888-221-7070.

**For all non-emergency questions about the PSPS, customers and the public should call Pacific Power at 1-888-221-7070.**

Puede hablar con un agente de servicio al cliente sobre cómo prepararse y qué medidas de seguridad tomar para los incendios forestales. Llame al 888-221-7070.

请致电 888-221-7070，向客服专员了解森林火灾安全与防范详情。

請致電 888-221-7070，向客服專員瞭解森林火災安全與防範詳情。

Unsere Mitarbeiter im Kundenservice beraten Sie gerne zu Waldbrandvorsorge und -bekämpfung. Sie erreichen uns unter 888-221-7070.

Lub chaw sawv cev saib xyuas tub lag luam yuav sib tham nrog koj txog ntawm kev nyab xeeb txog hluav taws hav zoov kub thiab kev npaj txhij. Thov hu rau 888-221-7070.

Ang isang ahente ng pangangalaga sa customer ay maaaring makipag-usap sa iyo tungkol sa kaligtasan at paghahanda sa mabilis na kumakalat na sunog o wildfire. Mangyaring tumawag sa 888-221-7070.

Một đại diện chăm sóc khách hàng có thể trao đổi với quý vị về an toàn cháy rừng và cách chuẩn bị sẵn sàng cho cháy rừng. Vui lòng gọi 888-221-7070.

Whak nheo bene llun xhinlago nha nhelee, akre unha lkues nha bii llaxgenha dá ghapchi nhada kate xde yii lixhe. Nheo: 888 221 7070

Kui kan'ani xi na'I kaston'o sa'a ña kutua'ani te ña kui kidani ta kiño'o yuku yoton, kan'ani 888-221- 7070.

**Social Media** (Facebook, Instagram, Twitter) 9/13/2020, 9:00 a.m.

\*\*\*WEED PSPS UPDATE 9/13 9 am\*\*\* Due to high winds, extreme drought conditions, low humidity and the current strain on firefighter resources, we are set to begin a Public Safety Power Shutoff Weed, Calif., in one hour at 10 AM. This is to reduce wildfire risks and keep the community safe.

The affected area includes a section from just north of Black Butte, extending north to the south end of Lake Shastina, bounding on the east just west of Highway 97 west to Old Hwy 99 and Stewart Springs Road, in the areas of Weed, Hammond Ranch, Edgewood and Carrick.

For all non-emergency questions about the PSPS, customers and the public should call Pacific Power at 1-888-221-7070.

Puede hablar con un agente de servicio al cliente sobre cómo prepararse y qué medidas de seguridad tomar para los incendios forestales. Llame al 888-221-7070.

请致电 888-221-7070，向客服专员了解森林火灾安全与防范详情。

請致電 888-221-7070，向客服專員瞭解森林火災安全與防範詳情。

Unsere Mitarbeiter im Kundenservice beraten Sie gerne zu Waldbrandvorsorge und -bekämpfung. Sie erreichen uns unter 888-221-7070.

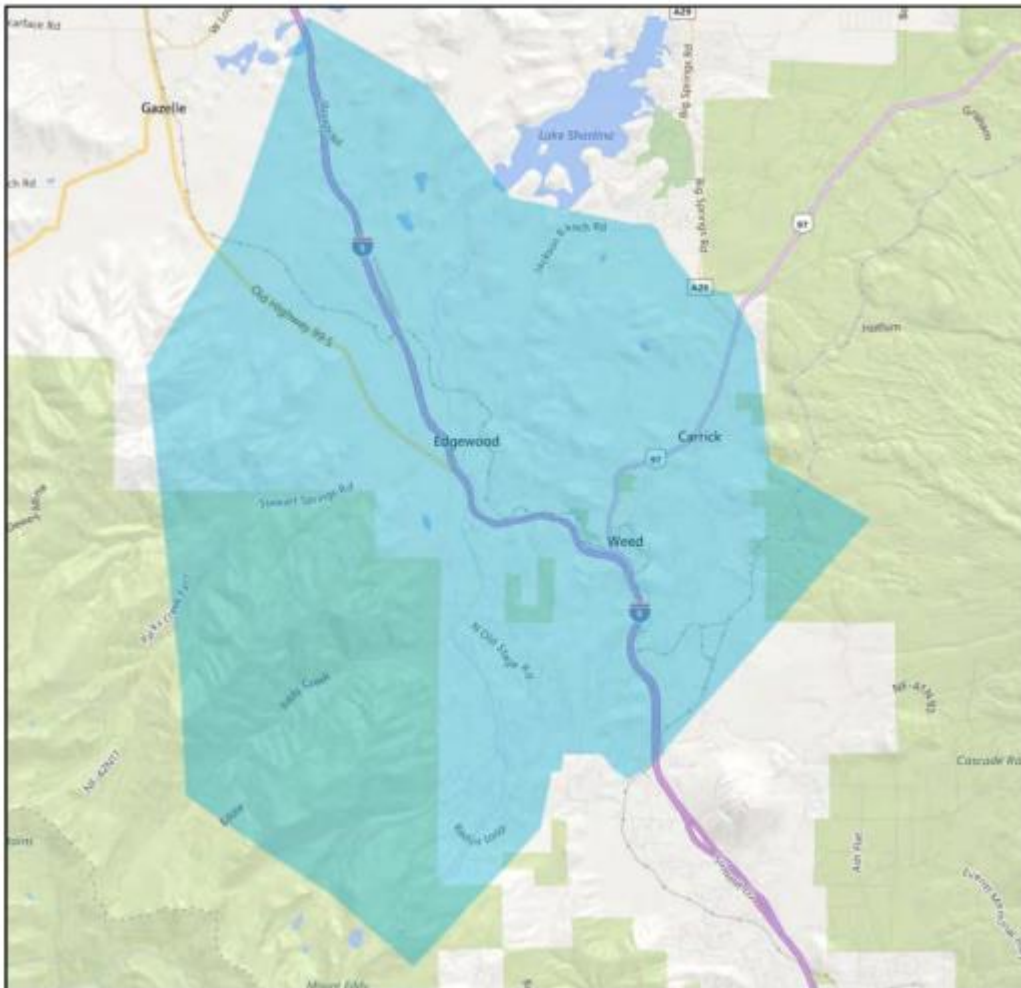
Lub chaw sawv cev saib xyuas tub lag luam yuav sib tham nrog koj txog ntawm kev nyab xeeb txog hluav taws hav zoov kub thiab kev npaj txhij. Thov hu rau 888-221-7070.

Ang isang ahente ng pangangalaga sa customer ay maaaring makipag-usap sa iyo tungkol sa kaligtasan at paghahanda sa mabilis na kumakalat na sunog o wildfire. Mangyaring tumawag sa 888-221-7070.

Một đại diện chăm sóc khách hàng có thể trao đổi với quý vị về an toàn cháy rừng và cách chuẩn bị sẵn sàng cho cháy rừng. Vui lòng gọi 888-221-7070.

Whak nheo bene llun xhinlago nha nhelee, akre unha lkues nha bii llaxgenha dá ghapchi nhada kate xde yii lixhe. Nheo: 888 221 7070

Kui kan'ani xi na'I kaston'o sa'a ña kutua'ani te ña kui kidani ta kiño'o yuku yoton, kan'ani 888-221- 7070.



**Public Safety Power Shutoff – Areas near Weed, Calif.**  
**De-energization Notification**

**9/13/2020, 10:00 a.m. Notice**

**Phone and Email Script**

Hello, this is an important safety message from Pacific Power. Because of extreme wildfire conditions, Pacific Power has turned off power to approximately 2,500 customers in Weed, Calif. So long as forecasts are accurate, the company expects to begin the restoration process around 5 p.m. on Sunday evening, with the goal to have service returned to all customers by 8 p.m.

The affected area includes a section from just north of Black Butte, extending north to the south end of Lake Shastina, bounding on the east just west of Highway 97 west to Old Hwy 99 and Stewart Springs Road, in the areas of Weed, Hammond Ranch, Edgewood and Carrick.

Current weather forecasts include high, sustained winds, extreme drought, and low humidity which warrants a Public Safety Power Shutoff. In addition, the current strain on local and regional firefighting resources is a concern.

You are encouraged to be prepared and have an outage kit ready.

The next notification of the event will happen at 5 p.m.; when it is estimated power restoration efforts will begin.

Thank you and we appreciate your understanding and patience during this important public safety measure.

### **Text Message**

Pacific Power has initiated a Public Safety Power Shutoff today at 10 a.m. More info at [pacificpower.net/psps](http://pacificpower.net/psps)

### **Media Advisory**

Contact:  
Pacific Power media line  
503-813-6018

FOR IMMEDIATE RELEASE  
Sept. 13, 2020

## **Pacific Power initiates Public Safety Power Shutoff in Weed, California**

WEED, Calif. — Because of extreme wildfire conditions, Pacific Power has turned off power to approximately 2,500 customers in Weed, Calif., beginning today, September 13th at 10 a.m. So long as forecasts are accurate, the company expects to begin the restoration process around 5 p.m. on Sunday evening, with the goal to have service returned to all customers by 8 p.m.

Current weather conditions include high, sustained winds, extreme drought, and low humidity which warranted a Public Safety Power Shutoff. In addition, the current strain on local and regional firefighting resources is a concern. High winds are forecasted to remain in the area into the early evening.

“The safety of the communities we serve is our highest priority,” said Erik Brookhouse, vice president of system operations. “We’re taking this extraordinary precaution because the right combination of factors for a potentially extreme and hard-to-fight fire event are present today. We take the decision to turn off power seriously. With the current weather conditions and strain on firefighting resources it’s important we act on all fire mitigation measures. We appreciate our customers understanding and patience.”

The affected area includes a section from just north of Black Butte, extending north to the south end of Lake Shastina, bounding on the east just west of Highway 97 west to Old Hwy 99 and Stewart Springs Road, in the areas of Weed, Hammond Ranch, Edgewood and Carrick.

Customers are encouraged to be prepared and have an outage kit ready.

Turning off power during a Public Safety Power Shutoff is done to prevent wind-blown or falling debris from making contact with energized power lines. Pacific Power crews will actively patrol and remove debris from lines and make repairs if needed. Once line inspections are complete and extreme weather conditions have subsided, Pacific Power will re-energize the lines.

The company began notifying customers about the Public Safety Power Shutoff on Friday through phone calls, email and text messages. Affected customers will continue to receive updates through ongoing communications at these estimated times:

- 5 p.m.; when restoration work begins
- 8 p.m.; when restoration work concludes and service is restored to customers

These times are subject to change based on forecasted and actual weather conditions.

Pacific Power urges customers to verify their contact information is up-to-date. Customers can do this by logging into their online account at [pacificpower.net](http://pacificpower.net) or calling the customer care center at 1-888-221-7070.

**For all non-emergency questions about the PSPS, customers and the public should call Pacific Power at 1-888-221-7070.**

Puede hablar con un agente de servicio al cliente sobre cómo prepararse y qué medidas de seguridad tomar para los incendios forestales. Llame al 888-221-7070.

请致电 888-221-7070，向客服专员了解森林火灾安全与防范详情。

請致電 888-221-7070，向客服專員瞭解森林火災安全與防範詳情。

Unsere Mitarbeiter im Kundenservice beraten Sie gerne zu Waldbrandvorsorge und -bekämpfung. Sie erreichen uns unter 888-221-7070.

Lub chaw sawv cev saib xyuas tub lag luam yuav sib tham nrog koj txog ntawm kev nyab xeeb txog hluav taws hav zoov kub thiab kev npaj txhij. Thov hu rau 888-221-7070.

Ang isang ahente ng pangangalaga sa customer ay maaaring makipag-usap sa iyo tungkol sa kaligtasan at paghahanda sa mabilis na kumakalat na sunog o wildfire. Mangyaring tumawag sa 888-221-7070.

Một đại diện chăm sóc khách hàng có thể trao đổi với quý vị về an toàn cháy rừng và cách chuẩn bị sẵn sàng cho cháy rừng. Vui lòng gọi 888-221-7070.



Whak nheo bene llun xhinlago nha nhelee, akre unha lkues nha bii llaxgenha dá ghapchi nhada kate xde yii lixhe. Nheo: 888 221 7070

Kui kan'ani xi na'I kaston'o sa'a ña kutua'ani te ña kui kidani ta kiño'o yuku yoton, kan'ani 888-221- 7070.

**Social Media** (Facebook, Instagram, Twitter) 9/13/2020, 10:00 a.m.

\*\*\*WEED PSPS UPDATE 9/13 10 am \*\*\* We have turned off power to approx. 2,500 customers in areas around

Weed, Calif., due to high winds, extreme drought conditions, low humidity and current strain on firefighting resources.

So long as forecasts are accurate, the company expects to begin the restoration process around 5 p.m. on Sunday evening, with the goal to have service returned to all customers by 8 p.m. More information at [pacificpower.net/psps](http://pacificpower.net/psps).

For all non-emergency questions about the PSPS, customers and the public should call Pacific Power at 1-888-221-7070.

Puede hablar con un agente de servicio al cliente sobre cómo prepararse y qué medidas de seguridad tomar para los incendios forestales. Llame al 888-221-7070.

请致电 888-221-7070，向客服专员了解森林火灾安全与防范详情。

請致電 888-221-7070，向客服專員瞭解森林火災安全與防範詳情。

Unsere Mitarbeiter im Kundenservice beraten Sie gerne zu Waldbrandvorsorge und -bekämpfung. Sie erreichen uns unter 888-221-7070.

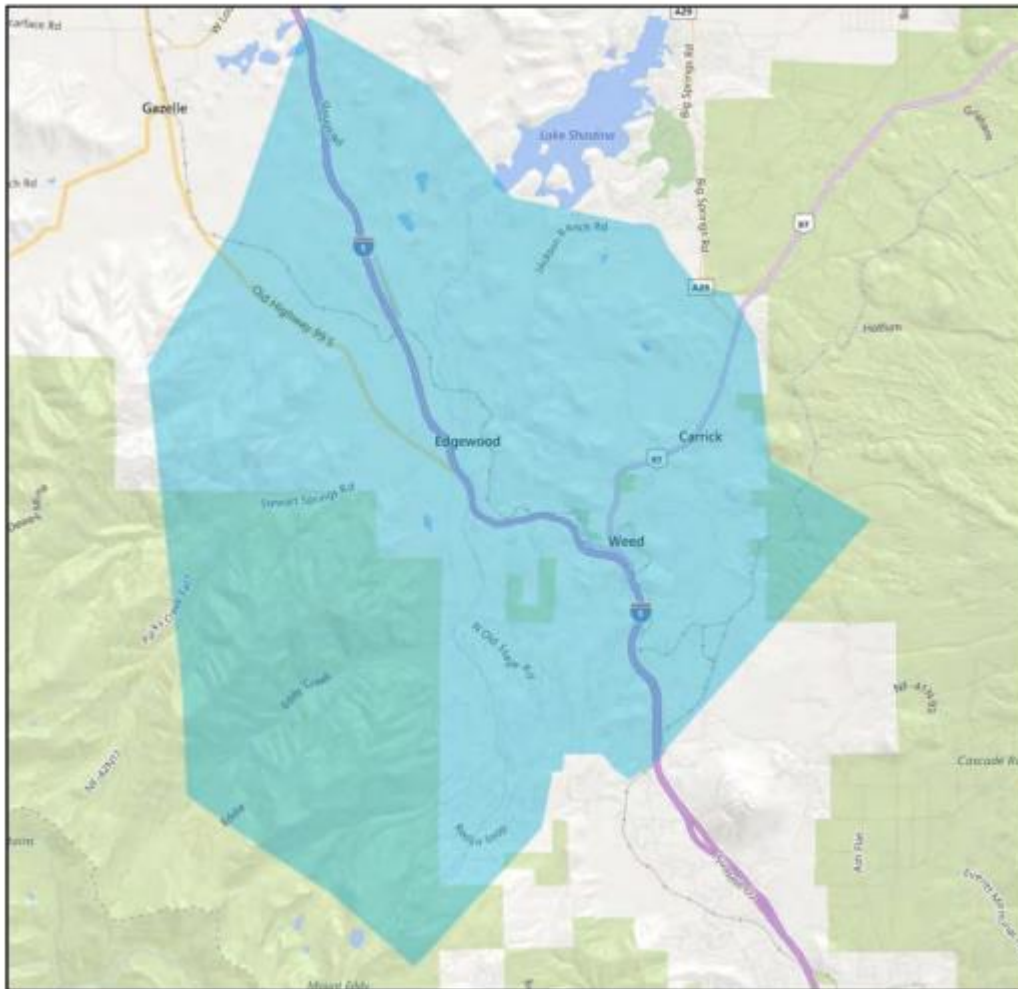
Lub chaw sawv cev saib xyuas tub lag luam yuav sib tham nrog koj txog ntawm kev nyab xeeb txog hluav taws hav zoov kub thiab kev npaj txhij. Thov hu rau 888-221-7070.

Ang isang ahente ng pangangalaga sa customer ay maaaring makipag-usap sa iyo tungkol sa kaligtasan at paghahanda sa mabilis na kumakalat na sunog o wildfire. Mangyaring tumawag sa 888-221-7070.

Một đại diện chăm sóc khách hàng có thể trao đổi với quý vị về an toàn cháy rừng và cách chuẩn bị sẵn sàng cho cháy rừng. Vui lòng gọi 888-221-7070.

Whak nheo bene llun xhinlago nha nhelee, akre unha lkues nha bii llaxgenha dá ghapchi nhada kate xde yii lixhe. Nheo: 888 221 7070

Kui kan'ani xi na'I kaston'o sa'a ña kutua'ani te ña kui kidani ta kiño'o yuku yoton, kan'ani 888-221- 7070.



**Website**

Public Safety Power Shutoff is active for Weed, California area. Because of extreme wildfire conditions, Pacific Power has turned off power to approximately 2,500 customers in Weed, Calif., beginning Sunday, September 13th at 10 a.m. So long as forecasts are accurate, the company expects to begin the restoration process around 5 p.m. on Sunday evening, with the goal to have service returned to all customers by 8 p.m.

Current weather forecasts include high, sustained winds, extreme drought, and low humidity warranted a Public Safety Power Shutoff. In addition, the current strain on local and regional firefighting resources is a concern. High winds are forecasted to remain in the area into the early evening.

The affected area includes a section from just north of Black Butte, extending north to the south end of Lake Shastina, bounding on the east just west of Highway 97 west to Old Hwy 99 and Stewart Springs Road, in the areas of Weed, Hammond Ranch, Edgewood and Carrick.

Pacific Power urges customers to verify their contact information is up-to-date. Customers can do this by logging into their online account at [pacificpower.net](http://pacificpower.net) or calling the customer care center at 1-888-221-7070.

## **Public Safety Power Shutoff – Areas near Weed, Calif.** **Beginning Stages of Restoration Notification**

**9/13/2020, 5:00 p.m. Notice**

### **Phone and Email Script**

Hello, this is an important message from Pacific Power. Crews are patrolling lines and performing inspections after a wind event moved through the Weed, Calif. area today. The line inspections are to identify if any damage happened to power facilities or if debris such as tree limbs became stuck on lines. It's estimated these patrols will take approximately three hours. Power will be restored to affected customers as crews determine it is safe. The goal is to have power back on for the 2,500 affected customers by 8 p.m.

A combination of extreme wildfire conditions are present in the area including extreme drought, low humidity, high fuel load and elevated levels on key weather indexes. In addition, the current strain on local and regional firefighting resources was an additional factor in issuing a Public Safety Power Shutoff.

The next notification of the event will happen when power is fully restored to customers.

Thank you and we appreciate your understanding and patience during this important public safety measure.

Puede hablar con un agente de servicio al cliente sobre cómo prepararse y qué medidas de seguridad tomar para los incendios forestales. Llame al 888-221-7070.

请致电 888-221-7070，向客服专员了解森林火灾安全与防范详情。

請致電 888-221-7070，向客服專員瞭解森林火災安全與防範詳情。

Unsere Mitarbeiter im Kundenservice beraten Sie gerne zu Waldbrandvorsorge und -bekämpfung. Sie erreichen uns unter 888-221-7070.

Lub chaw sawv cev saib xyuas tub lag luam yuav sib tham nrog koj txog ntawm kev nyab xeeb txog hluav taws hav zoov kub thiab kev npaj txhij. Thov hu rau 888-221-7070.

Ang isang ahente ng pangangalaga sa customer ay maaaring makipag-usap sa iyo tungkol sa kaligtasan at paghahanda sa mabilis na kumakalat na sunog o wildfire. Mangyaring tumawag sa 888-221-7070.

Một đại diện chăm sóc khách hàng có thể trao đổi với quý vị về an toàn cháy rừng và cách chuẩn bị sẵn sàng cho cháy rừng. Vui lòng gọi 888-221-7070.

Whak nheo bene llun xhinlago nha nhelee, akre unha lkues nha bii llaxgenha dá ghapchi nhada kate xde yii lixhe. Nheo: 888 221 7070

Kui kan'ani xi na'I kaston'o sa'a ña kutua'ani te ña kui kidani ta kiño'o yuku yoton, kan'ani 888-221-7070

### **Text Message**

Pacific Power has started the process to restore power to customers in Weed area. Est. time to full restoration is 8 p.m.

### **Media Advisory**

Contact:  
Pacific Power media line  
503-813-6018

FOR IMMEDIATE RELEASE  
Sept. 13, 2020

## **Pacific Power begins restoration process for Public Safety Power Shutoff in Weed, California area**

WEED, Calif. — Pacific Power crews are patrolling lines and performing inspections after a wind event moved through the Weed, Calif. area today. The line inspections are to identify if any damage happened to power facilities or if debris such as tree limbs became stuck on lines. It's estimated these patrols will take approximately three hours. Power will be restored to affected customers as crews determine it is safe. The goal is to have power back on for the 2,500 affected customers by 8 p.m.

“Mitigating wildfire risk and protecting the communities we serve is our top priority,” said Erik Brookhouse, vice president of system operations. “The winds were not as widespread as the models predicted, but some sections within the shutoff area, particularly north of Weed, did see high gusts. We appreciate our customers’ patience and understanding during this important public safety measure.”

A combination of extreme wildfire conditions are present in the area including extreme drought, low humidity, high fuel load and elevated levels on key weather indexes. In addition, the current strain on local and regional firefighting resources was an additional factor in issuing a Public Safety Power Shutoff.

The affected area included a section from just north of Black Butte, extending north to the south end of Lake Shastina, bounding on the east just west of Highway 97 west to Old Hwy 99 and Stewart Springs Road, in the areas of Weed, Hammond Ranch, Edgewood and Carrick.

The company began notifying customers about the Public Safety Power Shutoff on Friday through phone calls, email and text messages. Affected customers will receive an additional update when restoration work concludes and service is restored to customers.

**For all non-emergency questions about the PSPS, customers and the public should call Pacific Power at 1-888-221-7070.**

Puede hablar con un agente de servicio al cliente sobre cómo prepararse y qué medidas de seguridad tomar para los incendios forestales. Llame al 888-221-7070.

請致電 888-221-7070，向客服專員了解森林火災安全與防範詳情。

請致電 888-221-7070，向客服專員瞭解森林火災安全與防範詳情。

Unsere Mitarbeiter im Kundenservice beraten Sie gerne zu Waldbrandvorsorge und -bekämpfung. Sie erreichen uns unter 888-221-7070.

Lub chaw sawv cev saib xyuas tub lag luam yuav sib tham nrog koj txog ntawm kev nyab xeeb txog hluav taws hav zoov kub thiab kev npaj txhij. Thov hu rau 888-221-7070.

Ang isang ahente ng pangangalaga sa customer ay maaaring makipag-usap sa iyo tungkol sa kaligtasan at paghahanda sa mabilis na kumakalat na sunog o wildfire. Mangyaring tumawag sa 888-221-7070.

69

Một đại diện chăm sóc khách hàng có thể trao đổi với quý vị về an toàn cháy rừng và cách chuẩn bị sẵn sàng cho cháy rừng. Vui lòng gọi 888-221-7070.

Whak nheo bene llun xhinlago nha nhelee, akre unha lkues nha bii llaxgenha dá ghapchi nhada kate xde yii lixhe. Nheo: 888 221 7070

Kui kan'ani xi na'I kaston'o sa'a ña kutua'ani te ña kui kidani ta kiño'o yuku yoton, kan'ani 888-221- 7070.

**Social Media** (Facebook, Instagram, Twitter) 9/13/2020, 5:00 p.m.

\*\*\*WEED PSPS UPDATE 9/13 5 pm\*\*\* Crews are patrolling lines and performing inspections after a wind event moved through the Weed, Calif. area today. It's estimated these patrols will take approximately three hours. Power will be restored to affected customers as crews determine it is safe. The goal is to have power back on for the 2,500 affected customers by 8 p.m.

A combination of extreme wildfire conditions are present in the area including extreme drought, low humidity, high fuel load and elevated levels on key weather indexes. In addition, the current

strain on local and regional firefighting resources was an additional factor in issuing a Public Safety Power Shutoff.

 <p><b>PUBLIC SAFETY POWER SHUTOFF</b></p> <p>For all <u>non-emergency</u> questions about the PSPS, customers and the public should call Pacific Power at 1-888-221-7070.</p> 	<p>Puede hablar con un agente de servicio al cliente sobre cómo prepararse y qué medidas de seguridad tomar para los incendios forestales. Llame al 888-221-7070.</p> <p>請致電 888-221-7070, 向客服專員了解森林火災安全與防範詳情。</p> <p>請致電 888-221-7070, 向客服專員瞭解森林火災安全與防範詳情。</p> <p>Unsere Mitarbeiter im Kundenservice beraten Sie gerne zu Waldbrandvorsorge und -bekämpfung. Sie erreichen uns unter 888-221-7070.</p> <p>Lub chaw sawv cev saib xyuas tub lag luam yuav sib tham nrog koj txog ntawm kev nyab xeeb txog hluav taws hav zoov kub thiab kev npaj txhij. Thov hu rau 888-221-7070.</p> <p>Ang isang ahente ng pangangalaga sa customer ay maaaring makipag-usap sa iyo tungkol sa kaligtasan at paghahanda sa mabilis na kumakalat na sunog o wildfire. Mangyaring tumawag sa 888-221-7070.</p> <p>Một đại diện chăm sóc khách hàng có thể trao đổi với quý vị về an toàn cháy rừng và cách chuẩn bị sẵn sàng cho cháy rừng. Vui lòng gọi 888-221-7070.</p> <p>Whak nheo bene ilun xhinlago nha nhelee, akre unha ikues nha bii ilaxgenha dá ghapchi nhada kate xde yii lixhe. Nheo: 888 221 7070.</p> <p>Kui kan'ani xi na'i kaston'o sa'a ña kutua'ani te ña kui kidani ta kiño'o yuku yoton, kan'ani 888-221- 7070.</p>
---	--

## Website

### **Public Safety Power Shutoff is active for Weed, California area.**

Pacific Power crews are patrolling lines and performing inspections after a wind event moved through the Weed, Calif. area today. The line inspections are to identify if any damage happened to power facilities or if debris such as tree limbs became stuck on lines. It's estimated these patrols will take approximately three hours. Power will be restored to affected customers as crews determine it is safe. The goal is to have power back on for the 2,500 affected customers by 8 p.m.

### **Public Safety Power Shutoff – Areas near Weed, Calif.** **Restoration Complete Notification**

**9/13/2020, 7:00 p.m. Notice**

#### **Phone and Email Script**

Hello, this is an important message from Pacific Power. Pacific Power has restored service to approximately 2,500 customers in the Weed, Calif. area after initiating a Public Safety Power Shutoff earlier today. Crews completed inspections and determined it was safe to begin step restoration. Service to customers was restored by 7 p.m.

Reducing wildfire risks and protecting the communities we serve is our top priority. The winds were not as widespread as the models predicted, but some sections within the shutoff area, particularly north of Weed, did see high gusts.

A combination of extreme wildfire conditions are present in the area including extreme drought, low humidity, high fuel load and elevated levels on key weather indexes. In addition, the current strain on local and regional firefighting resources was an additional factor in issuing a Public Safety Power Shutoff.

We appreciate your patience and understanding during this important public safety measure. Thank you.

Puede hablar con un agente de servicio al cliente sobre cómo prepararse y qué medidas de seguridad tomar para los incendios forestales. Llame al 888-221-7070.

請致電 888-221-7070，向客服專員了解森林火災安全與防範詳情。

請致電 888-221-7070，向客服專員瞭解森林火災安全與防範詳情。

Unsere Mitarbeiter im Kundenservice beraten Sie gerne zu Waldbrandvorsorge und -bekämpfung. Sie erreichen uns unter 888-221-7070.

Lub chaw sawv cev saib xyuas tub lag luam yuav sib tham nrog koj txog ntawm kev nyab xeeb txog hluav taws hav zoov kub thiab kev npaj txhij. Thov hu rau 888-221-7070.

Ang isang ahente ng pangangalaga sa customer ay maaaring makipag-usap sa iyo tungkol sa kaligtasan at paghahanda sa mabilis na kumakalat na sunog o wildfire. Mangyaring tumawag sa 888-221-7070.

Một đại diện chăm sóc khách hàng có thể trao đổi với quý vị về an toàn cháy rừng và cách chuẩn bị sẵn sàng cho cháy rừng. Vui lòng gọi 888-221-7070.

Whak nheo bene llun xhinlago nha nhelee, akre unha lkues nha bii llaxgenha dá ghapchi nhada kate xde yii lixhe. Nheo: 888 221 7070

Kui kan'ani xi na'I kaston'o sa'a ña kutua'ani te ña kui kidani ta kiño'o yuku yoton, kan'ani 888-221-7070

### **Text Message**

Pacific Power has restored power to all customers in Weed, Calif. We appreciate your understanding and patience during this important public safety measure.

### **Media Advisory**

Contact:  
Pacific Power media line  
503-813-6018

FOR IMMEDIATE RELEASE  
Sept. 13, 2020

## **Power restored to customers in Weed, California area after Public Safety Power Shutoff**

WEED, Calif. — Pacific Power has restored service to approximately 2,500 customers in the Weed, Calif. area after initiating a Public Safety Power Shutoff earlier today, September 13. Crews completed inspections and determined it was safe to begin step restoration. Service to customers was restored by 7 p.m.

“Mitigating wildfire risk and protecting the communities we serve is our top priority,” said Erik Brookhouse, vice president of system operations. “The winds were not as widespread as the models predicted, but some sections within the shutoff area, particularly north of Weed, did see high gusts. We appreciate our customers’ patience and understanding during this important public safety measure.”

A combination of extreme wildfire conditions are present in the area including extreme drought, low humidity, high fuel load and elevated levels on key weather indexes. In addition, the current strain on local and regional firefighting resources was an additional factor in issuing a Public Safety Power Shutoff.

The affected area included a section from just north of Black Butte, extending north to the south end of Lake Shastina, bounding on the east just west of Highway 97 west to Old Hwy 99 and Stewart Springs Road, in the areas of Weed, Hammond Ranch, Edgewood and Carrick.

The company began notifying customers about the Public Safety Power Shutoff on Friday through phone calls, email and text messages.

**For all non-emergency questions about the PSPS, customers and the public should call Pacific Power at 1-888-221-7070.**

Puede hablar con un agente de servicio al cliente sobre cómo prepararse y qué medidas de seguridad tomar para los incendios forestales. Llame al 888-221-7070.

請致電 888-221-7070，向客服專員了解森林火災安全與防範詳情。

請致電 888-221-7070，向客服專員瞭解森林火災安全與防範詳情。

Unsere Mitarbeiter im Kundenservice beraten Sie gerne zu Waldbrandvorsorge und -bekämpfung. Sie erreichen uns unter 888-221-7070.



Lub chaw sawv cev saib xyuas tub lag luam yuav sib tham nrog koj txog ntawm kev nyab xeeb txog hluav taws hav zoov kub thiab kev npaj txhij. Thov hu rau 888-221-7070.

Ang isang ahente ng pangangalaga sa customer ay maaaring makipag-usap sa iyo tungkol sa kaligtasan at paghahanda sa mabilis na kumakalat na sunog o wildfire. Mangyaring tumawag sa 888-221-7070.

Một đại diện chăm sóc khách hàng có thể trao đổi với quý vị về an toàn cháy rừng và cách chuẩn bị sẵn sàng cho cháy rừng. Vui lòng gọi 888-221-7070.

Whak nheo bene llun xhinlago nha nhelee, akre unha lkues nha bii llaxgenha dá ghapchi nhada kate xde yii lixhe. Nheo: 888 221 7070

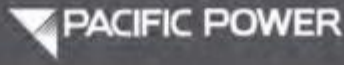
Kui kan'ani xi na'I kaston'o sa'a ña kutua'ani te ña kui kidani ta kiño'o yuku yoton, kan'ani 888-221- 7070.

**Social Media** (Facebook, Instagram, Twitter) 9/13/2020, 7:00 p.m.

\*\*\*WEED PSPS UPDATE 9/13 7 pm\*\*\* Pacific Power has restored service to approx. 2,500 customers in the

Weed, Calif. area after initiating a Public Safety Power Shutoff earlier today. Crews completed inspections and determined it was safe to begin step restoration. Service to customers was restored by 7 p.m. A combination of extreme wildfire conditions are present in the area including extreme drought, low humidity, high fuel load and elevated levels on key weather indexes. In addition, the current strain on local and regional firefighting resources was an additional factor in issuing a Public Safety Power Shutoff.

We appreciate your patience and understanding during this important public safety measure. Thank you.

  
**PUBLIC SAFETY POWER SHUTOFF**

**For all non-emergency questions about the PSPS, customers and the public should call Pacific Power at 1-888-221-7070.**

Puede hablar con un agente de servicio al cliente sobre cómo prepararse y qué medidas de seguridad tomar para los incendios forestales. Llame al 888-221-7070.

請致電 888-221-7070，向客服專員了解森林火災安全與防範詳情。

請致電 888-221-7070，向客服專員瞭解森林火災安全與防範詳情。

Unsere Mitarbeiter im Kundenservice beraten Sie gerne zu Waldbrandvorsorge und -bekämpfung. Sie erreichen uns unter 888-221-7070.

Lub chaw sawv cev saib xyuas tub lag luam yuav sib tham nrog koj txog ntawm kev nyab xeeb txog hluav taws hav zoov kub thiab kev npaj txhij. Thov hu rau 888-221-7070.

Ang isang ahente ng pangangalaga sa customer ay maaaring makipag-usap sa iyo tungkol sa kaligtasan at paghahanda sa mabilis na kumakalat na sunog o wildfire. Mangyaring tumawag sa 888-221-7070.

Một đại diện chăm sóc khách hàng có thể trao đổi với quý vị về an toàn cháy rừng và cách chuẩn bị sẵn sàng cho cháy rừng. Vui lòng gọi 888-221-7070.

Whak nheo bene llun xhinlago nha nhelee, akre unha lkues nha bii llaxgenha dá ghapchi nhada kate xde yii lixhe. Nheo: 888 221 7070

Kui kan'ani xī nā'l kaston'o sa'a nā kutua'ani te nā kui kidani ta kiño'o yuku yoton, kan'ani 888-221- 7070.

## **Public Safety Power Shutoff – Areas near Weed, Calif.**

### **Watch Notification**

**9/17/2020, 11:00 a.m.**

### **Phone and Email Script**

Hello this is Pacific Power with an important safety message. We are actively monitoring forecasted weather conditions in the Weed area. Higher winds are in the forecast for this afternoon which might require a Public Safety Power Shutoff.

Higher winds combined with low humidity and dry conditions can result in flying debris coming in contact with power lines and escalating wildfire risk. We will continue to monitor these

conditions and will provide updates should we need to issue a Public Safety Power Shutoff in your area.

The potential shutoff area includes a section from just north of Black Butte, extending north to the south end of Lake Shastina, bounding on the east just west of Highway 97 west to Old Hwy 99 and Stewart Springs Road, in the areas of Weed, Hammond Ranch, Edgewood and Carrick. The community of Lake Shastina is not included in this watch.

You can use the interactive map at [www.pacificpower.net/psps](http://www.pacificpower.net/psps) to see if they are located in a PSPS area.

We encourage you to be prepared and have an outage kit ready.

The next notification of the event will happen at 12 p.m. today.

Thank you and we appreciate your understanding and patience during this important public safety measure.

Puede hablar con un agente de servicio al cliente sobre cómo prepararse y qué medidas de seguridad tomar para los incendios forestales. Llame al 888-221-7070.

请致电 888-221-7070，向客服专员了解森林火灾安全与防范详情。

請致電 888-221-7070，向客服專員瞭解森林火災安全與防範詳情。

Unsere Mitarbeiter im Kundenservice beraten Sie gerne zu Waldbrandvorsorge und -bekämpfung. Sie erreichen uns unter 888-221-7070.

Lub chaw sawv cev saib xyuas tub lag luam yuav sib tham nrog koj txog ntawm kev nyab xeeb txog hluav taws hav zoov kub thiab kev npaj txhij. Thov hu rau 888-221-7070.

Ang isang ahente ng pangangalaga sa customer ay maaaring makipag-usap sa iyo tungkol sa kaligtasan at paghahanda sa mabilis na kumakalat na sunog o wildfire. Mangyaring tumawag sa 888-221-7070.

Một đại diện chăm sóc khách hàng có thể trao đổi với quý vị về an toàn cháy rừng và cách chuẩn bị sẵn sàng cho cháy rừng. Vui lòng gọi 888-221-7070.

Whak nheo bene llun xhinlago nha nhelee, akre unha lkues nha bii llaxgenha dá ghapchi nhada kate xde yii lixhe. Nheo: 888 221 7070

Kui kan'ani xi na'I kaston'o sa'a ña kutua'ani te ña kui kidani ta kiño'o yuku yoton, kan'ani 888-221- 7070.

### **Text Message**

Pacific Power is monitoring forecasted high winds for this afternoon in Weed. Additional info at [pacificpower.net/psps](http://pacificpower.net/psps).

### **Media Advisory**

Contact:  
Pacific Power media line  
503-813-6018

FOR IMMEDIATE RELEASE  
September 17, 2020

## **Pacific Power closely monitoring Weed, Calif. area for wildfire risk and possible Public Safety Power Shutoff today**

*Weather forecast for Thursday afternoon is being monitored for possible de-energization of power lines in designated high fire risk areas*

WEED, Calif. — Pacific Power is closely monitoring weather conditions in Weed, Calif., which is considered a high fire risk area, and may issue a [Public Safety Power Shutoff](#) (PSPS) today, September 17th beginning around 2 p.m. and extending to around 6 p.m.

The measure is a proactive effort to mitigate wildfire risk in the face of hazardous fire weather conditions including extremely low humidity, dry vegetation, elevated levels on key weather indexes and sustained winds and gusts.

“Taking this extraordinary measure is out of an abundance of caution,” said Erik Brookhouse, vice president of system, operations. “Forecasted high, sustained winds are stronger than what we saw on Sunday when we initiated the previous PSPS. We understand the inconvenience this can cause our customers and appreciate their patience during this important public safety event.”

Approximately 2,500 customers in Weed could be affected. Those customers have been notified of the watch through phone calls, email and text messages. Affected customers will continue to receive updates through ongoing communications. Customers can use the interactive map at [www.pacificpower.net/psps](http://www.pacificpower.net/psps) to see if they are located in a PSPS area. Customers are encouraged to be prepared and have an outage kit ready.

If a PSPS is needed, customers will receive additional notifications at these times:

- 12 p.m.; two hours before power is turned off
- 1 p.m.; one hour before power is turned off
- 2 p.m.; assuming that lines are de-energized as planned
- 6 p.m.; when restoration work begins
- 8 p.m.; when restoration work concludes and service is restored to customers

**For all non-emergency questions about the PSPS, customers and the public should call Pacific Power at 1-888-221-7070.**

Turning off power during a Public Safety Power Shutoff is done to prevent wind-blown or falling debris from making contact with energized power lines. Pacific Power crews will actively patrol and remove debris from lines and make repairs if needed. Once line inspections are complete and extreme weather conditions have subsided, Pacific Power will re-energize the lines.

Visit [pacificpower.net/psps](http://pacificpower.net/psps) for additional information on Public Safety Power Shutoffs, wildfire safety and emergency preparedness.

Puede hablar con un agente de servicio al cliente sobre cómo prepararse y qué medidas de seguridad tomar para los incendios forestales. Llame al 888-221-7070.

請致電 888-221-7070，向客服專員了解森林火災安全與防范詳情。

請致電 888-221-7070，向客服專員瞭解森林火災安全與防範詳情。

Unsere Mitarbeiter im Kundenservice beraten Sie gerne zu Waldbrandvorsorge und -bekämpfung. Sie erreichen uns unter 888-221-7070.

Lub chaw sawv cev saib xyuas tub lag luam yuav sib tham nrog koj txog ntawm kev nyab xeeb txog hluav taws hav zoov kub thiab kev npaj txhij. Thov hu rau 888-221-7070.

Ang isang ahente ng pangangalaga sa customer ay maaaring makipag-usap sa iyo tungkol sa kaligtasan at paghahanda sa mabilis na kumakalat na sunog o wildfire. Mangyaring tumawag sa 888-221-7070.


Một đại diện chăm sóc khách hàng có thể trao đổi với quý vị về an toàn cháy rừng và cách chuẩn bị sẵn sàng cho cháy rừng. Vui lòng gọi 888-221-7070.

Whak nheo bene llun xhinlago nha nhelee, akre unha lkues nha bii llaxgenha dá ghapchi nhada kate xde yii lixhe. Nheo: 888 221 7070

Kui kan'ani xi na'I kaston'o sa'a ña kutua'ani te ña kui kidani ta kiño'o yuku yoton, kan'ani 888-221- 7070.

**Social Media** (Facebook, Instagram, Twitter) 9/17/2020, 11:15 a.m.

We are closely monitoring weather conditions in Weed, Calif., which is considered a high fire risk area, and may need to issue a Public Safety Power Shutoff on Thursday 9/17 to reduce risk and keep the community safe. Learn more at <https://www.pacificpower.net/about/newsroom/news-releases/pp-closely-monitoring-weed-calif-area-for-possible-psps.html?fbclid=IwAR3pWBUp4pkyCSyx1yDEVhXjLmYaG-aY6BvbvdgcbmCWjB9Xzu0DaIIB1g>

 **PACIFIC POWER**

---

## **PUBLIC SAFETY POWER SHUTOFF**

---

**For all non-emergency questions about the PSPS, customers and the public should call Pacific Power at 1-888-221-7070.**

Puede hablar con un agente de servicio al cliente sobre cómo prepararse y qué medidas de seguridad tomar para los incendios forestales. Llame al 888-221-7070.

請致電 888-221-7070，向客服專員了解森林火災安全與防範詳情。

請致電 888-221-7070，向客服專員瞭解森林火災安全與防範詳情。

Unsere Mitarbeiter im Kundenservice beraten Sie gerne zu Waldbrandvorsorge und -bekämpfung. Sie erreichen uns unter 888-221-7070.

Lub chaw sawv cev saib xyuas tub lag luam yuav sib tham nrog koj txog ntawm kev nyab xeeb txog hluav taws hav zoov kub thiab kev npaj txhij. Thov hu rau 888-221-7070.

Ang isang ahente ng pangangalaga sa customer ay maaaring makipag-usap sa iyo tungkol sa kaligtasan at paghahanda sa mabilis na kumakalat na sunog o wildfire. Mangyaring tumawag sa 888-221-7070.

Một đại diện chăm sóc khách hàng có thể trao đổi với quý vị về an toàn cháy rừng và cách chuẩn bị sẵn sàng cho cháy rừng. Vui lòng gọi 888-221-7070.

Whak nheo bene llun xhinlago nha nhelee, akre unha lkues nha bii llaxgenha dá ghapchi nhada kate xde yii lixhe. Nheo: 888 221 7070

Kui kan'ani xii na'i kaston'o sa'a ña kutua'ani te ña kui kidani ta kiño'o yuku yoton, kan'ani 888-221- 7070.

### Website

Pacific Power is closely monitoring weather conditions in Weed, Calif., which is considered a high fire risk area, and may issue a [Public Safety Power Shutoff](#) (PSPS) today, September 17th beginning around 2 p.m. and extending to around 6 p.m.

The measure is a proactive effort to mitigate wildfire risk in the face of hazardous fire weather conditions including extremely low humidity, dry vegetation, elevated levels on key weather indexes and sustained winds and gusts.

Approximately 2,500 customers in Weed could be affected. Those customers have been notified of the watch through phone calls, email and text messages. Affected customers will continue to

receive updates through ongoing communications. Customers are encouraged to be prepared and have an outage kit ready.

**For all non-emergency questions about the PSPS, customers and the public should call Pacific Power at 1-888-221-7070.**

Puede hablar con un agente de servicio al cliente sobre cómo prepararse y qué medidas de seguridad tomar para los incendios forestales. Llame al 888-221-7070.

請致電 888-221-7070，向客服專員了解森林火災安全與防範詳情。

請致電 888-221-7070，向客服專員瞭解森林火災安全與防範詳情。

Unsere Mitarbeiter im Kundenservice beraten Sie gerne zu Waldbrandvorsorge und -bekämpfung. Sie erreichen uns unter 888-221-7070.

Lub chaw sawv cev saib xyuas tub lag luam yuav sib tham nrog koj txog ntawm kev nyab xeeb txog hluav taws hav zoov kub thiab kev npaj txhij. Thov hu rau 888-221-7070.

Ang isang ahente ng pangangalaga sa customer ay maaaring makipag-usap sa iyo tungkol sa kaligtasan at paghahanda sa mabilis na kumakalat na sunog o wildfire. Mangyaring tumawag sa 888-221-7070.

Một đại diện chăm sóc khách hàng có thể trao đổi với quý vị về an toàn cháy rừng và cách chuẩn bị sẵn sàng cho cháy rừng. Vui lòng gọi 888-221-7070.

Whak nheo bene llun xhinlago nha nhelee, akre unha lkues nha bii llaxgenha dá ghapchi nhada kate xde yii lixhe. Nheo: 888 221 7070

Kui kan'ani xi na'I kaston'o sa'a ña kutua'ani te ña kui kidani ta kiño'o yuku yoton, kan'ani 888-221- 7070.

## **Public Safety Power Shutoff – Areas near Weed, Calif.** **Watch Notification Update**

**9/17/2020, 2:00 p.m.**

### **Phone and Email Script**

Hello this is Pacific Power with an important safety message. Areas around Weed, California, which is considered a high fire risk area, remain under a [Public Safety Power Shutoff](#) watch today, September 17th beginning at 2 p.m. and extending to 6 p.m. Peak gusts are expected in an area north of Weed.

If a PSPS is required, the company may reduce the potentially impacted customers from 2,500 to 600 and issue a PSPS to a sectionalized area. This area encompasses north east of Weed, north of

Alamo Avenue, out to the Carrick area, a section just west of Old Stage Road and Old Hwy 99 South. This includes an area north of Edgewood. It does not include areas in Hammond Ranch and the community of Lake Shastina.

You can use the interactive map at [www.pacificpower.net/psps](http://www.pacificpower.net/psps) to see if they are located in a PSPS area. We encourage you to be prepared and have an outage kit ready.

If a PSPS is needed, customers will receive notification that power will be turned off. Otherwise, customer notification will happen at the conclusion of the event.

Thank you and we appreciate your understanding and patience during this important public safety measure.

Puede hablar con un agente de servicio al cliente sobre cómo prepararse y qué medidas de seguridad tomar para los incendios forestales. Llame al 888-221-7070.

请致电 888-221-7070, 向客服专员了解森林火灾安全与防范详情。

請致電 888-221-7070, 向客服專員瞭解森林火災安全與防範詳情。

Unsere Mitarbeiter im Kundenservice beraten Sie gerne zu Waldbrandvorsorge und -bekämpfung. Sie erreichen uns unter 888-221-7070.

Lub chaw sawv cev saib xyuas tub lag luam yuav sib tham nrog koj txog ntawm kev nyab xeeb txog hluav taws hav zoov kub thiab kev npaj txhij. Thov hu rau 888-221-7070.

Ang isang ahente ng pangangalaga sa customer ay maaaring makipag-usap sa iyo tungkol sa kaligtasan at paghahanda sa mabilis na kumakalat na sunog o wildfire. Mangyaring tumawag sa 888-221-7070.

Một đại diện chăm sóc khách hàng có thể trao đổi với quý vị về an toàn cháy rừng và cách chuẩn bị sẵn sàng cho cháy rừng. Vui lòng gọi 888-221-7070.

Whak nheo bene llun xhinlago nha nhelee, akre unha lkues nha bii llaxgenha dá ghapchi nhada kate xde yii lixhe. Nheo: 888 221 7070

Kui kan'ani xi na'I kaston'o sa'a ña kutua'ani te ña kui kidani ta kiño'o yuku yoton, kan'ani 888-221- 7070.

### **Text Message**

Pacific Power is monitoring forecasted high winds for this afternoon in Weed. Additional info at [pacificpower.net/psps](http://pacificpower.net/psps).

### **Media Advisory**



Contact:  
Pacific Power media line  
503-813-6018

FOR IMMEDIATE RELEASE  
September 17, 2020

## **Pacific Power continues to closely monitor Weed, Calif. area for wildfire risk and possible Public Safety Power Shutoff today**

*Weather forecast for Thursday afternoon is being monitored for possible de-energization of power lines in designated high fire risk areas*

WEED, Calif. — Areas around Weed, Calif., which is considered a high fire risk area, remain under a [Public Safety Power Shutoff](#) (PSPS) watch today, September 17th beginning at 2 p.m. and extending to around 6 p.m. Peak gusts are expected in an area north of Weed.

If a PSPS is required, the company may reduce the potentially impacted customers from 2,500 to 600 and issue a PSPS to a sectionalized area. This area encompasses north east of Weed, north of Alamo Avenue, out to the Carrick area, a section just west of Old Stage Road and Old Hwy 99 South. This includes an area north of Edgewood. It does not include areas in Hammond Ranch and the community of Lake Shastina.

The measure is a proactive effort to mitigate wildfire risk in the face of hazardous fire weather conditions including extremely low humidity, dry vegetation, elevated levels on key weather indexes and sustained winds and gusts.

“Taking this extraordinary measure is out of an abundance of caution,” said Erik Brookhouse, vice president of system, operations. “Forecasted high, sustained winds are stronger than what we saw on Sunday when we initiated the previous PSPS. We understand the inconvenience this can cause our customers and appreciate their patience during this important public safety event.”

Customers have been notified of the watch through phone calls, email and text messages. Affected customers will continue to receive updates through ongoing communications. Customers can use the interactive map at [www.pacificpower.net/psps](http://www.pacificpower.net/psps) to see if they are located in a PSPS area. Customers are encouraged to be prepared and have an outage kit ready.

If a PSPS is needed, customers will receive notification that power will be turned off. Otherwise, customer notification will happen at the conclusion of the event.

**For all non-emergency questions about the PSPS, customers and the public should call Pacific Power at 1-888-221-7070.**

Turning off power during a Public Safety Power Shutoff is done to prevent wind-blown or falling debris from making contact with energized power lines. Pacific Power crews will actively patrol and remove debris from lines and make repairs if needed. Once line inspections are complete and extreme weather conditions have subsided, Pacific Power will re-energize the lines.

Visit [pacificpower.net/psps](http://pacificpower.net/psps) for additional information on Public Safety Power Shutoffs, wildfire safety and emergency preparedness.

Puede hablar con un agente de servicio al cliente sobre cómo prepararse y qué medidas de seguridad tomar para los incendios forestales. Llame al 888-221-7070.

請致電 888-221-7070，向客服專員了解森林火災安全與防範詳情。

請致電 888-221-7070，向客服專員瞭解森林火災安全與防範詳情。

Unsere Mitarbeiter im Kundenservice beraten Sie gerne zu Waldbrandvorsorge und -bekämpfung. Sie erreichen uns unter 888-221-7070.

Lub chaw sawv cev saib xyuas tub lag luam yuav sib tham nrog koj txog ntawm kev nyab xeeb txog hluav taws hav zoov kub thiab kev npaj txhij. Thov hu rau 888-221-7070.

Ang isang ahente ng pangangalaga sa customer ay maaaring makipag-usap sa iyo tungkol sa kaligtasan at paghahanda sa mabilis na kumakalat na sunog o wildfire. Mangyaring tumawag sa 888-221-7070.

Một đại diện chăm sóc khách hàng có thể trao đổi với quý vị về an toàn cháy rừng và cách chuẩn bị sẵn sàng cho cháy rừng. Vui lòng gọi 888-221-7070.

Whak nheo bene llun xhinlago nha nhelee, akre unha lkues nha bii llaxgenha dá ghapchi nhada kate xde yii lixhe. Nheo: 888 221 7070


Kui kan'ani xi na'I kaston'o sa'a ña kutua'ani te ña kui kidani ta kiño'o yuku yoton, kan'ani 888-221- 7070.

**Social Media** (Facebook, Instagram, Twitter) 9/17/2020, 2:18 p.m.

\*WEED PSPS UPDATE 9/17 2pm\* Areas around Weed, Calif., which is considered a high fire risk area, remain under a Public Safety Power Shutoff (PSPS) watch today, September 17th beginning at 2 p.m. and extending to around 6 p.m. Peak gusts are expected in an area north of Weed.

If a PSPS is required, the company may reduce the potentially impacted customers from 2,500 to 600 and issue a PSPS to a sectionalized area. This area encompasses north east of Weed, north of Alamo Avenue, out to the Carrick area, a section just west of Old Stage Road and Old Hwy 99 South. This includes an area north of Edgewood. It does not include areas in Hammond Ranch and the community of Lake Shastina.

If a PSPS is needed, customers will receive notification that power will be turned off. Otherwise, customer notification will happen at the conclusion of the event.

 **PACIFIC POWER**

---

**PUBLIC SAFETY POWER SHUTOFF**

---

**For all non-emergency questions about the PSPS, customers and the public should call Pacific Power at 1-888-221-7070.**

Puede hablar con un agente de servicio al cliente sobre cómo prepararse y qué medidas de seguridad tomar para los incendios forestales. Llame al 888-221-7070.

請致電 888-221-7070，向客服專員了解森林火災安全與防範詳情。

請致電 888-221-7070，向客服專員瞭解森林火災安全與防範詳情。

Unsere Mitarbeiter im Kundenservice beraten Sie gerne zu Waldbrandvorsorge und -bekämpfung. Sie erreichen uns unter 888-221-7070.

Lub chaw sawv cev saib xyuas tub lag luam yuav sib tham nrog koj txog ntawm kev nyab xeeb txog hluav taws hav zoov kub thiab kev npaj txhij. Thov hu rau 888-221-7070.

Ang isang ahente ng pangangalaga sa customer ay maaaring makipag-usap sa iyo tungkol sa kaligtasan at paghahanda sa mabilis na kumakalat na sunog o wildfire. Mangyaring tumawag sa 888-221-7070.

Một đại diện chăm sóc khách hàng có thể trao đổi với quý vị về an toàn cháy rừng và cách chuẩn bị sẵn sàng cho cháy rừng. Vui lòng gọi 888-221-7070.

Whak nheo bene llun xhinlago nha nhelee, akre unha lkues nha bii llaxgenha dá ghapchi nhada kate xde yii lixhe. Nheo: 888 221 7070

Kui kan'ani xī nā'l kaston'o sa'a nā kutua'ani te nā kui kidani ta kiño'o yuku yoton, kan'ani 888-221- 7070.

### Website

Areas around Weed, Calif., which is considered a high fire risk area, remain under a [Public Safety Power Shutoff](#) (PSPS) watch today, September 17th beginning at 2 p.m. and extending to around 6 p.m. Peak gusts are expected in an area north of Weed.

If a PSPS is required, the company may reduce the potentially impacted customers from 2,500 to 600 and issue a PSPS to a sectionalized area. This area encompasses northeast of Weed, north of Alamo Avenue, out to the Carrick area, a section just west of Old Stage Road and Old Hwy 99 South. This includes an area north of Edgewood. It does not include areas in Hammond Ranch and the community of Lake Shastina.

If a PSPS is needed, customers will receive notification that power will be turned off. Otherwise, customer notification will happen at the conclusion of the event.

**For all non-emergency questions about the PSPS, customers and the public should call Pacific Power at 1-888-221-7070.**

Puede hablar con un agente de servicio al cliente sobre cómo prepararse y qué medidas de seguridad tomar para los incendios forestales. Llame al 888-221-7070.

請致電 888-221-7070，向客服專員了解森林火災安全與防範詳情。

請致電 888-221-7070，向客服專員瞭解森林火災安全與防範詳情。

Unsere Mitarbeiter im Kundenservice beraten Sie gerne zu Waldbrandvorsorge und -bekämpfung. Sie erreichen uns unter 888-221-7070.

Lub chaw sawv cev saib xyuas tub lag luam yuav sib tham nrog koj txog ntawm kev nyab xeeb txog hluav taws hav zoov kub thiab kev npaj txhij. Thov hu rau 888-221-7070.

Ang isang ahente ng pangangalaga sa customer ay maaaring makipag-usap sa iyo tungkol sa kaligtasan at paghahanda sa mabilis na kumakalat na sunog o wildfire. Mangyaring tumawag sa 888-221-7070.

Một đại diện chăm sóc khách hàng có thể trao đổi với quý vị về an toàn cháy rừng và cách chuẩn bị sẵn sàng cho cháy rừng. Vui lòng gọi 888-221-7070.

Whak nheo bene llun xhinlago nha nhelee, akre unha lkues nha bii llaxgenha dá ghapchi nhada kate xde yii lixhe. Nheo: 888 221 7070

Kui kan'ani xi na'I kaston'o sa'a ña kutua'ani te ña kui kidani ta kiño'o yuku yoton, kan'ani 888-221- 7070.

## **Public Safety Power Shutoff – Areas near Weed, Calif.**

### **Watch Notification Conclusion**

**9/17/2020, 6:00 p.m.**

#### **Phone and Email Script**

Hello this is Pacific Power with an important message. The Public Safety Power Shutoff Watch has concluded. Real time weather observation and station measurements indicated PSPS conditions diminished by 6 p.m. removing the greater Weed area from the watch status. Elevated winds were experienced in areas north of Weed. However not at a level in combination with additional fire weather metrics that would require a PSPS.

Thank you and we appreciate your understanding and patience during this important public safety measure.

Puede hablar con un agente de servicio al cliente sobre cómo prepararse y qué medidas de seguridad tomar para los incendios forestales. Llame al 888-221-7070.

請致電 888-221-7070，向客服專員了解森林火災安全與防範詳情。

請致電 888-221-7070，向客服專員瞭解森林火災安全與防範詳情。

Unsere Mitarbeiter im Kundenservice beraten Sie gerne zu Waldbrandvorsorge und -bekämpfung. Sie erreichen uns unter 888-221-7070.

Lub chaw sawv cev saib xyuas tub lag luam yuav sib tham nrog koj txog ntawm kev nyab xeeb txog hluav taws hav zoov kub thiab kev npaj txhij. Thov hu rau 888-221-7070.

Ang isang ahente ng pangangalaga sa customer ay maaaring makipag-usap sa iyo tungkol sa kaligtasan at paghahanda sa mabilis na kumakalat na sunog o wildfire. Mangyaring tumawag sa 888-221-7070.

Một đại diện chăm sóc khách hàng có thể trao đổi với quý vị về an toàn cháy rừng và cách chuẩn bị sẵn sàng cho cháy rừng. Vui lòng gọi 888-221-7070.

Whak nheo bene llun xhinlago nha nhelee, akre unha lkues nha bii llaxgenha dá ghapchi nhada kate xde yii lixhe. Nheo: 888 221 7070

Kui kan'ani xi na'I kaston'o sa'a ña kutua'ani te ña kui kidani ta kiño'o yuku yoton, kan'ani 888-221- 7070.

### **Text Message**

Pacific Power has concluded a PSPS watch in areas of Weed, CA. Additional info at [pacificpower.net/psps](http://pacificpower.net/psps).

### **Media Advisory**

Contact:  
Pacific Power media line  
503-813-6018

FOR IMMEDIATE RELEASE  
September 17, 2020

## **Pacific Power concludes Public Safety Power Shutoff watch for Weed, Calif. area**

WEED, Calif. — Areas around Weed, Calif., which is considered a high fire risk area, were under a [Public Safety Power Shutoff](#) (PSPS) watch today, September 17, beginning at 2 p.m. Real time weather observation and station measurements indicated PSPS conditions diminished by 6 p.m. removing the greater Weed area from the watch status. Elevated winds were experienced in areas north of Weed. However not at a level in combination with additional fire weather metrics that would require a PSPS.

“We appreciate our customers’ patience and understanding during this PSPS watch event” said Erik Brookhouse, vice president of system, operations. “Turning off power to customers is not something we take lightly and would only use a PSPS as a last resort for public safety.”

Turning off power during a PSPS is done to prevent wind-blown or falling debris from making contact with energized power lines. It is a proactive effort to mitigate wildfire risk in the face of hazardous fire weather conditions including extremely low humidity, dry vegetation, elevated levels on key weather indexes and sustained winds and gusts.

Customers have been notified of that the PSPS watch has ended.

Visit [pacificpower.net/pssp](http://pacificpower.net/pssp) for additional information on Public Safety Power Shutoffs, wildfire safety and emergency preparedness.

Puede hablar con un agente de servicio al cliente sobre cómo prepararse y qué medidas de seguridad tomar para los incendios forestales. Llame al 888-221-7070.

请致电 888-221-7070，向客服专员了解森林火灾安全与防范详情。

請致電 888-221-7070，向客服專員瞭解森林火災安全與防範詳情。

Unsere Mitarbeiter im Kundenservice beraten Sie gerne zu Waldbrandvorsorge und -bekämpfung. Sie erreichen uns unter 888-221-7070.

Lub chaw sawv cev saib xyuas tub lag luam yuav sib tham nrog koj txog ntawm kev nyab xeeb txog hluav taws hav zoov kub thiab kev npaj txhij. Thov hu rau 888-221-7070.

Ang isang ahente ng pangangalaga sa customer ay maaaring makipag-usap sa iyo tungkol sa kaligtasan at paghahanda sa mabilis na kumakalat na sunog o wildfire. Mangyaring tumawag sa 888-221-7070.

Một đại diện chăm sóc khách hàng có thể trao đổi với quý vị về an toàn cháy rừng và cách chuẩn bị sẵn sàng cho cháy rừng. Vui lòng gọi 888-221-7070.

Whak nheo bene llun xhinlago nha nhelee, akre unha lkues nha bii llaxgenha dá ghapchi nhada kate xde yii lixhe. Nheo: 888 221 7070

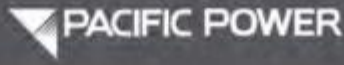
Kui kan'ani xi na'I kaston'o sa'a ña kutua'ani te ña kui kidani ta kiño'o yuku yoton, kan'ani 888-221- 7070.

**Social Media** (Facebook, Instagram, Twitter) 9/17/2020, 6:00 p.m.

\*WEED PSPS UPDATE 9/17 6pm\* The Public Safety Power Shutoff Watch for the Weed, CA area has

concluded. Real time weather observation and station measurements indicated PSPS conditions diminished by 6 p.m. removing the greater Weed area from the watch status. Elevated winds were experienced in areas north of Weed. However not at a level in combination with additional fire weather metrics that would require a PSPS.

We appreciate our customers' understanding and patience during the watch event.

  
**PUBLIC SAFETY POWER SHUTOFF**

**For all non-emergency questions about the PSPS, customers and the public should call Pacific Power at 1-888-221-7070.**

Puede hablar con un agente de servicio al cliente sobre cómo prepararse y qué medidas de seguridad tomar para los incendios forestales. Llame al 888-221-7070.

請致電 888-221-7070，向客服專員了解森林火災安全與防範詳情。

請致電 888-221-7070，向客服專員瞭解森林火災安全與防範詳情。

Unsere Mitarbeiter im Kundenservice beraten Sie gerne zu Waldbrandvorsorge und -bekämpfung. Sie erreichen uns unter 888-221-7070.

Lub chaw sawv cev saib xyuas tub lag luam yuav sib tham nrog koj txog ntawm kev nyab xeeb txog hluav taws hav zoov kub thiab kev npaj txhij. Thov hu rau 888-221-7070.

Ang isang ahente ng pangangalaga sa customer ay maaaring makipag-usap sa iyo tungkol sa kaligtasan at paghahanda sa mabilis na kumakalat na sunog o wildfire. Mangyaring tumawag sa 888-221-7070.

Một đại diện chăm sóc khách hàng có thể trao đổi với quý vị về an toàn cháy rừng và cách chuẩn bị sẵn sàng cho cháy rừng. Vui lòng gọi 888-221-7070.

Whak nheo bene llun xhinlago nha nhelee, akre unha lkues nha bii llaxgenha dá ghapchi nhada kate xde yii lixhe. Nheo: 888 221 7070

Kui kan'ani xī nā'l kaston'o sa'a nā kutua'ani te nā kui kidani ta kiño'o yuku yoton, kan'ani 888-221- 7070.

### Website

The Public Safety Power Shutoff Watch for the Weed, CA area has concluded. Real time weather observation and station measurements indicated PSPS conditions diminished by 6 p.m. removing the greater Weed area from the watch status. Elevated winds were experienced in areas north of Weed. However not at a level in combination with additional fire weather metrics that would require a PSPS.

**For all non-emergency questions about the PSPS, customers and the public should call Pacific Power at 1-888-221-7070.**



Puede hablar con un agente de servicio al cliente sobre cómo prepararse y qué medidas de seguridad tomar para los incendios forestales. Llame al 888-221-7070.

請致電 888-221-7070，向客服專員了解森林火災安全與防範詳情。

請致電 888-221-7070，向客服專員瞭解森林火災安全與防範詳情。

Unsere Mitarbeiter im Kundenservice beraten Sie gerne zu Waldbrandvorsorge und -bekämpfung. Sie erreichen uns unter 888-221-7070.

Lub chaw sawv cev saib xyuas tub lag luam yuav sib tham nrog koj txog ntawm kev nyab xeeb txog hluav taws hav zoov kub thiab kev npaj txhij. Thov hu rau 888-221-7070.

Ang isang ahente ng pangangalaga sa customer ay maaaring makipag-usap sa iyo tungkol sa kaligtasan at paghahanda sa mabilis na kumakalat na sunog o wildfire. Mangyaring tumawag sa 888-221-7070.

Một đại diện chăm sóc khách hàng có thể trao đổi với quý vị về an toàn cháy rừng và cách chuẩn bị sẵn sàng cho cháy rừng. Vui lòng gọi 888-221-7070.

Whak nheo bene llun xhinlago nha nhelee, akre unha lkues nha bii llaxgenha dá ghapchi nhada kate xde yii lixhe. Nheo: 888 221 7070

Kui kan'ani xi na'I kaston'o sa'a ña kutua'ani te ña kui kidani ta kiño'o yuku yoton, kan'ani 888-221- 7070.

**REPORT CONTRIBUTIONS**

The following company personnel provided information that contributed to this report.

Bolton, Jeff ..... Emergency Manager

◆◆◆