



# **WILDFIRE MITIGATION PLAN**

---

---

*Revised June 20, 2023*

## TABLE OF CONTENTS

<b>I.</b>	<b>Utility Overview and Context</b>	<b>1</b>
A.	Utility Description and Context Setting Table	1
B.	Statutory Cross-Reference Table	3
C.	Process for Utility Adoption and Submittal of Annual WMP and Opportunities for Public Comment	5
D.	Description of Where WMP Information Can be Found on Utility Website	5
E.	Purpose of the Wildfire Mitigation Plan	5
F.	Organization of the Wildfire Mitigation Plan	6
<b>II.</b>	<b>Objectives of the Wildfire Mitigation Plan</b>	<b>6</b>
<b>III.</b>	<b>Roles and Responsibilities</b>	<b>7</b>
A.	Utility Governance Structure	7
B.	Wildfire Prevention	8
C.	Wildfire Response and Recovery	8
D.	Standardized Emergency Management System	9
<b>IV.</b>	<b>Wildfire Risks and Drivers Associated with Design, Construction, Operation, and Maintenance</b>	<b>11</b>
A.	Particular Risks and Risk Drivers Associated with Topographic & Climatological Risk Factors	11
B.	Enterprise-Wide Safety Risks	11
<b>V.</b>	<b>Wildfire Preventative Strategies</b>	<b>14</b>
A.	Low Fire Threat District	14
B.	Design and Construction Standards	14
C.	Vegetation Management	15
D.	Inspections	15
E.	Reclosing Policy	15
F.	De-Energization	15
G.	Community Outreach and Public Awareness	15
<b>VI.</b>	<b>Restoration of Service</b>	<b>15</b>
<b>VII.</b>	<b>Plan Evaluation</b>	<b>17</b>
A.	Metrics and Assumptions for Measuring Plan Performance	17
B.	Impact of Metrics on Plan	18
C.	Monitoring and Auditing the Plan	18
D.	Identifying and Correcting Deficiencies in the Plan	18
E.	Monitoring the Effectiveness of Inspections	18
<b>VIII.</b>	<b>Public and Professional Feedback</b>	<b>19</b>
A.	CMUA – Wildfire Preparedness, Response and Recovery Working Group	19
B.	Public Input Process	19

## I. UTILITY OVERVIEW AND CONTEXT

### A. Utility Description and Context Setting Table

Victorville Municipal Utility Services is only a distributor and does not own or operate any generating plants. The service area for Victorville Municipal Utility Services only includes the Southern California Logistics Airport (SCLA) and the Foxborough Industrial Park. VMUS only serves commercial and industrial customers. Southern California Edison serves all of the residents of the City of Victorville and any commercial / industrial customer not located within the VMUS territory.

Victorville Municipal Utility Services' (VMUS) overarching goal is to provide safe, reliable, and economic electric service to its service territories. In order to meet this goal, Victorville Municipal Utility Services constructs, maintains, and operates its electrical lines and equipment in a manner that minimizes the risk of catastrophic wildfire posed by its electrical lines and equipment.

**Table 1: Context-Setting Information**

Utility Name	Victorville Municipal Utility Services (VMUS)	
<b>Service Territory Size</b>	6 square miles	
<b>Owned Assets</b>	<input type="checkbox"/> Transmission <input checked="" type="checkbox"/> Distribution <input type="checkbox"/> Generation	
<b>Number of Customers Served</b>	40 customer accounts	
<b>Population Within Service Territory</b>	N/A people	
<b>Customer Class Makeup</b>	<i>Number of Accounts</i>	<i>Share of Total Load (MWh)</i>
	0% Residential; 0% Government; 0% Agricultural; 0% Small/Medium Business; 100% Commercial/Industrial	0% Residential; 0% Government; 0% Agricultural; 0% Small/Medium Business; 100% Commercial/Industrial
<b>Service Territory Location/Topography<sup>1</sup></b>	0% Agriculture 0% Barren/Other 0% Conifer Forest 0% Conifer Woodland 99% Desert 0% Hardwood Forest 0% Hardwood Woodland 0% Herbaceous 0% Shrub 1% Urban 0% Water	
<b>Service Territory</b>	0% Wildland Urban Interface; 0% Wildland Urban Intermix;	

<sup>1</sup> This data shall be based on the California Department of Forestry and Fire Protection, California Multi-Source Vegetation Layer Map, depicting WHR13 Types (Wildlife Habitat Relationship classes grouped into 13 major land cover types) available at: <https://www.arcgis.com/home/item.html?id=b7ec5d68d8114b1fb2bfbf4665989eb3>.

<b>Wildland Urban Interface<sup>2</sup> (based on total area)</b>	
<b>Percent of Service Territory in CPUC High Fire Threat Districts (based on total area)</b>	<input checked="" type="checkbox"/> Includes maps Tier 2: 0% Tier 3: 0%
<b>Prevailing Wind Directions &amp; Speeds by Season</b>	<input checked="" type="checkbox"/> Includes maps <b>Winter</b> (Dec., Jan., and Feb.): Wind direction is North/North East with an average speed of 4.3K or 4.95 MPH. <b>Spring</b> (Mar., April, and May): Wind direction is North/North East with an average speed of 6K or 6.9 MPH. <b>Summer</b> (June, July, and Aug.): Wind direction is North/North East with an average speed of 5.3K or 6.1 MPH. <b>Fall</b> (Sept., Oct., and Nov.): Wind direction is North/North East with an average speed of 4.3K or 4.95 MPH.
<b>Miles of Owned Lines Underground and/or Overhead</b>	Overhead Dist.: 0.06 miles Overhead Trans.: 0 miles Underground Dist.: 25.2 miles Underground Trans.: 0 miles
	<b>Explanatory Note 1</b> – <i>Measurements in Circuit Miles.</i>
	<b>Explanatory Note 2</b> – <i>VMUS owns the electrical infrastructure that is all underground and services industrial and commercial customers only.</i>
<b>Percent of Owned Lines in CPUC High Fire Threat Districts</b>	<i>Overhead Distribution Lines as % of Total Distribution System (Inside and Outside Service Territory)</i>
	Tier 2: 0% Tier 3: 0%
	<i>Overhead Transmission Lines as % of Total Transmission System (Inside and Outside Service Territory)</i>
	Tier 2: 0% Tier 3: 0%
<b>Customers have ever lost service due to an IOU PSPS event?</b>	<input type="checkbox"/> Yes <input checked="" type="checkbox"/> No
<b>Have customers ever been notified of a potential loss of service to due to a forecasted IOU PSPS event?</b>	<input type="checkbox"/> Yes <input checked="" type="checkbox"/> No
<b>Has developed protocols to pre-emptively shut off electricity in response to elevated wildfire risks?</b>	<input type="checkbox"/> Yes <input checked="" type="checkbox"/> No

<sup>2</sup> This data shall be based on the definitions and maps maintained by the United States Department of Agriculture, as most recently assembled in *The 2010 Wildland-Urban Interface of the Conterminous United States*, available at [https://www.fs.fed.us/nrs/pubs/rmap/rmap\\_nrs8.pdf](https://www.fs.fed.us/nrs/pubs/rmap/rmap_nrs8.pdf).

Has previously pre-emptively shut off electricity in response to elevated wildfire risk?	<input type="checkbox"/> Yes <input checked="" type="checkbox"/> No If yes, then provide the following data for calendar year 2022: N/A.
------------------------------------------------------------------------------------------	---------------------------------------------------------------------------------------------------------------------------------------------

**B. STATUTORY CROSS-REFERENCE TABLE**

**Table 2: Cross References to Statutory Requirements**

Requirement	Statutory Language	Location in WMP
<b>Persons Responsible</b>	<b>PUC § 8387(b)(2)(A):</b> An accounting of the <b>responsibilities of persons</b> responsible for executing the plan.	Section 3-B Page 8
<b>Objectives of the Plan</b>	<b>PUC § 8387(b)(2)(B):</b> The <b>objectives</b> of the wildfire mitigation plan.	Section 2 Page: 6
<b>Preventive Strategies</b>	<b>PUC § 8387(b)(2)(C):</b> A description of the <b>preventive strategies and programs to be adopted by the local publicly owned electric utility</b> or electrical cooperative to minimize the risk of its electrical lines and equipment causing catastrophic wildfires, including consideration of dynamic climate change risks.	Section 5 Page 14
<b>Evaluation Metrics</b>	<b>PUC § 8387(b)(2)(D):</b> A description of the <b>metrics the local publicly owned electric utility or electrical cooperative plans to use to evaluate the wildfire mitigation plan’s performance</b> and the assumptions that underlie the use of those metrics.	Section 7-A Page 17
<b>Impact of Metrics</b>	<b>PUC § 8387(b)(2)(E):</b> A discussion of how the <b>application of previously identified metrics</b> to previous wildfire mitigation plan performances has informed the wildfire mitigation plan.	Section 7-B Page 18
<b>Deenergization Protocols</b>	<b>PUC § 8387(b)(2)(F):</b> <b>Protocols for disabling reclosers and deenergizing portions of the electrical distribution system</b> that consider the associated impacts on public safety, as well as protocols related to mitigating the public safety impacts of those protocols, including impacts on critical first responders and on health and communication infrastructure.	Section 5-E & F Page 15
<b>Customer Notification Procedures</b>	<b>PUC § 8387(b)(2)(G):</b> Appropriate and feasible <b>procedures for notifying a customer</b> who may be impacted by the deenergizing of electrical lines. The procedures shall consider the need to notify, as a priority, critical first responders, health care facilities, and operators of telecommunications infrastructure.	Section 6 Page 15
<b>Vegetation Management</b>	<b>PUC § 8387(b)(2)(H):</b> Plans for vegetation management.	Section 5-C Page 15
<b>Inspections</b>	<b>PUC § 8387(b)(2)(I):</b> <b>Plans for inspections</b> of the local publicly owned electric utility’s or electrical cooperative’s electrical infrastructure.	Section 5-D Page 15

<p><b>Prioritization of Wildfire Risks</b></p>	<p><b>PUC § 8387(b)(2)(J):</b> A list that <b>identifies, describes, and prioritizes all wildfire risks, and drivers for those risks, throughout the local publicly owned electric utility’s or electrical cooperative’s service territory.</b> The list shall include, but not be limited to, both of the following:</p> <p>(i) Risks and risk drivers associated with design, construction, operation, and maintenance of the local publicly owned electric utility’s or electrical cooperative’s equipment and facilities.</p> <p>(ii) Particular risks and <b>risk drivers</b> associated with topographic and climatological risk factors throughout the different parts of the local publicly owned electric utility’s or electrical cooperative’s service territory.</p>	<p>Section 4 Page 11</p>
<p><b>CPUC Fire Threat Map Adjustments</b></p>	<p><b>PUC § 8387(b)(2)(K):</b> Identification of any <b>geographic area in the local publicly owned electric utility’s or electrical cooperative’s service territory</b> that is a higher wildfire threat than is identified in a commission fire threat map, and identification of where the commission should expand a high fire threat district based on new information or changes to the environment.</p>	<p>Section 5-A Page 14</p>
<p><b>Enterprise-wide Risks</b></p>	<p><b>PUC § 8387(b)(2)(L):</b> A methodology for identifying and presenting <b>enterprise-wide</b> safety risk and wildfire-related risk.</p>	<p>Section 4-B Page 11</p>
<p><b>Restoration of Service</b></p>	<p><b>PUC § 8387(b)(2)(M):</b> A statement of how the local publicly owned electric utility or electrical cooperative will <b>restore service after a wildfire.</b></p>	<p>Section 6 Page 15</p>
<p><b>Monitor and Audit</b></p>	<p><b>PUC § 8387(b)(2)(N):</b> A description of the processes and procedures the local publicly owned electric utility or electrical cooperative shall use to do all of the following:</p> <p>(i) <b>Monitor and audit</b> the implementation of the wildfire mitigation plan.</p> <p>(ii) <b>Identify any deficiencies</b> in the wildfire mitigation plan or its implementation and correct those deficiencies.</p> <p>(iii) Monitor and audit the effectiveness of electrical line and equipment inspections, including inspections performed by contractors, that are carried out under the plan, other applicable statutes, or commission rules.</p>	<p>Section 7-C Page 18</p>

<p><b>Qualified Independent Evaluator</b></p>	<p><b>PUC § 8387(c):</b> The local publicly owned electric utility or electrical cooperative shall contract with a qualified independent evaluator with experience in assessing the safe operation of electrical infrastructure to review and assess the comprehensiveness of its wildfire mitigation plan. The independent evaluator shall issue a report that shall be made available on the Internet Web site of the local publicly owned electric utility or electrical cooperative, and shall present the report at a public meeting of the local publicly owned electric utility's or electrical cooperative's governing board.</p>	<p><a href="https://www.victorvilleca.gov/home/show/publisheddocument/4157/637262615505930000">https://www.victorvilleca.gov/home/show/publisheddocument/4157/637262615505930000</a></p>
-----------------------------------------------	-------------------------------------------------------------------------------------------------------------------------------------------------------------------------------------------------------------------------------------------------------------------------------------------------------------------------------------------------------------------------------------------------------------------------------------------------------------------------------------------------------------------------------------------------------------------------------------------------------------------------------------------	------------------------------------------------------------------------------------------------------------------------------------------------------------------------------------------

***C. PROCESS FOR ADOPTION AND SUBMITTAL OF VMUS' ANNUAL WMP AND OPPORTUNITIES FOR PUBLIC COMMENT***

VMUS is governed by the Victorville City Council. This plan was brought forth to the City Council and members of the public on June 21 2022. Due to the adoption of the plan not requiring a notice of public hearing or any special noticing requirements, the noticing of the plan followed the City's standards per the Brown Act. The agenda was posted a week in advance and public comment is a section of the agenda where members of the public can speak freely on any item on the agenda. Members of the public are given three minutes to speak on their items; at the time of the plan's adoption, there were no speakers.

***D. DESCRIPTION OF WHERE WMP INFORMATION CAN BE FOUND ON THE CITY OF VICTORVILLE WEBSITE***

Victorville Municipal Utility Service's current and historical Wildfire Mitigation Plan are available on the City of Victorville's website ([www.victorvilleca.gov](http://www.victorvilleca.gov)). Once on the City's website, Utilities can be found under the listing of City departments. The Wildfire Mitigation Plans, both past and present, can be accessed by following the link for Utilities forms and publications.

***E. PURPOSE OF THE WILDFIRE MITIGATION PLAN***

Victorville Municipal Utility Services electric supply system is located underground in conduit and vaults. Historically, undergrounded electric lines have not been associated with catastrophic wildfires. The undergrounding of electric lines serves as an effective mitigation measure to reduce the potential of power-line ignited wildfires. Based on a review of local conditions and historical fires, VMUS has determined that its electrical lines and equipment do not pose a significant risk of catastrophic wildfire.

Despite this low risk, VMUS takes appropriate actions to help its region prevent and respond to the increasing risk of devastating wildfires. In its role as a public agency, VMUS closely coordinates with other local safety and emergency officials to help protect against fires and respond to emergencies. In its role as a utility, VMUS follows all applicable design, construction, operation, and maintenance requirements that reduce safety risks associated with its system. This Wildfire Mitigation Plan describes the safety-related measures that VMUS follows to reduce its risk of causing wildfires.

## **F. ORGANIZATION OF THE WILDFIRE MITIGATION PLAN**

This Wildfire Mitigation Plan includes the following elements:

- Utility Overview and Context
- Objectives of the Plan;
- Roles and Responsibilities for Carrying Out the Plan;
- Identification of Key Wildfire Risks and Risk Drivers;
- Description of Wildfire Prevention, Mitigation, and Response Strategies and Programs;
- Metrics for Evaluating the Performance of the Plan and Identifying Areas for Improvement;
- Annual and Historical Results for Metrics;
- Description of Community Outreach and Education

## **II. OBJECTIVES OF THE WILDFIRE MITIGATION PLAN**

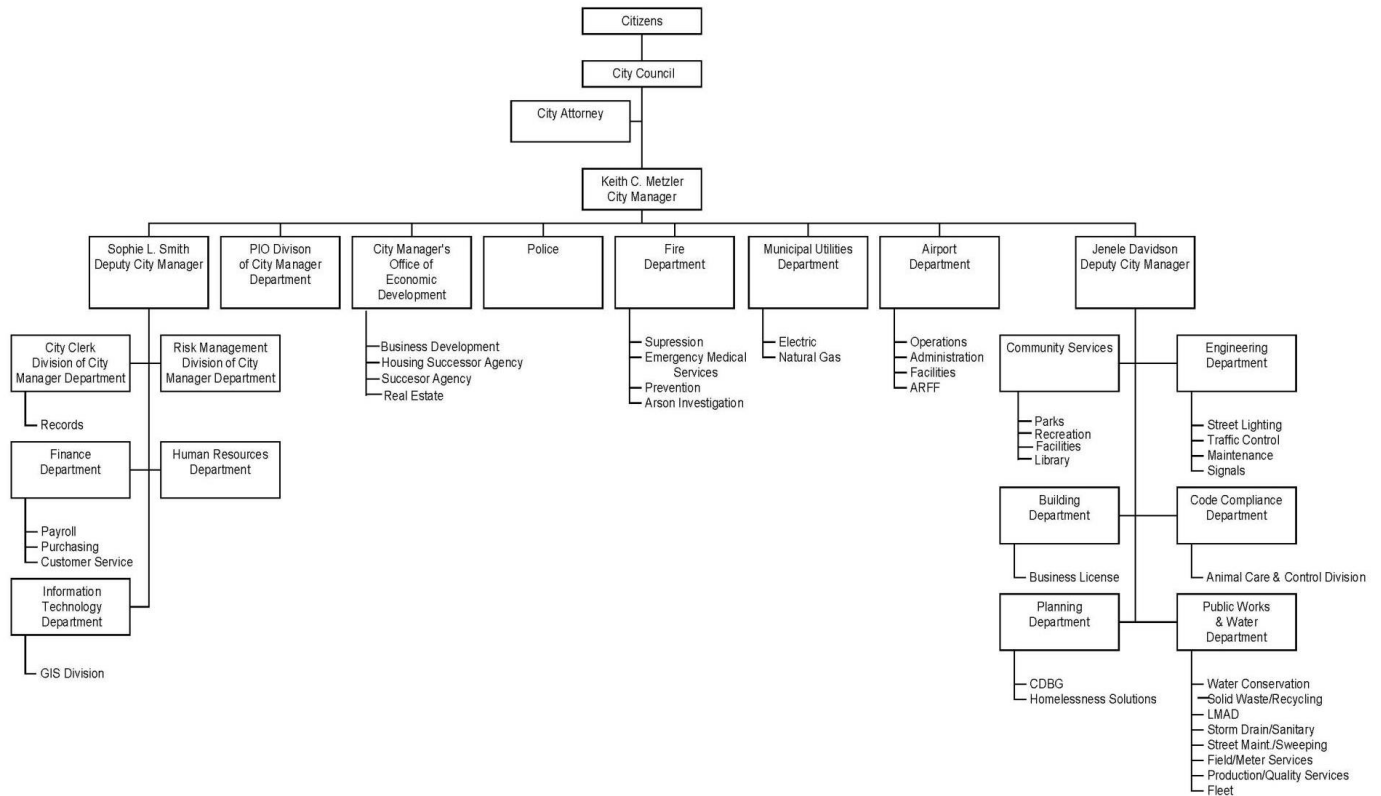
The primary goal of this Wildfire Mitigation Plan is to describe VMUS' existing programs, practices, and measures that effectively reduce the probability that VMUS' electric supply system could be the origin or contributing source for the ignition of a wildfire. To support this goal, VMUS regularly evaluates the prudent and cost-effective improvements to its physical assets, operations, and training that can help reduce the risk of equipment-related fires.

The secondary goal of this Wildfire Mitigation Plan is to improve the resiliency of the electric grid. As part of the development of this plan, VMUS assesses new industry practices and technologies that will reduce the likelihood of an interruption (frequency) in service and improve the restoration (duration) of service.



### III. ROLES AND RESPONSIBILITIES

#### A. UTILITY GOVERNANCE STRUCTURE



The City of Victorville is a general law city that operates under a Council-Manager form of government. VMUS is governed by a five-member City Council. The council appoints the City Manager, who oversees the daily operations of the City.

## ***B. WILDFIRE PREVENTION***

VMUS staff is responsible for electric facility design, maintenance, and inspection, including vegetation management. Although VMUS' electrical distribution system is 100% underground, VMUS follows best practices to prevent ignition of wildfires from its equipment. These items include:

- VMUS performs routine maintenance of all distribution facilities.
- VMUS adheres to a seasonal weed abatement and vegetation management schedule to maintain at-risk sites.
- VMUS maintains GO95, GO165, and GO174 standard clearances as part of regular maintenance cycles.
- VMUS abides by the National Electric Safety Code (NESC) Rule 012 and Rule 218 standards to abate trees, shrubs, weeds, and grass at all VMUS facilities.
- Electric system operates in a manner that will minimize potential wildfire risks.
- Take all reasonable and practicable actions to minimize the risk of a catastrophic wildfire caused by VMUS electric facilities.
- Coordinate with federal, state, and local fire management personnel as necessary or appropriate to implement VMUS' Wildfire Mitigation Plan.
- Immediately report fires to local fire departments, VMUS administration, and other City Officials, pursuant to existing VMUS practices and the requirements of this Wildfire Mitigation Plan.
- Coordinate with City Emergency Operations Center to disseminate safety warnings, emergency public information, and evacuation notices to local businesses.
- VMUS adheres to City of Victorville personnel code 2.36 for Employee Disaster Notification and Reporting.
- Take corrective action when the staff witnesses or is notified that fire protection measures have not been properly installed or maintained.
- Comply with relevant federal, state, and industry standard requirements, including the industry standards established by the California Public Utilities Commission (CPUC).

Strategies for mitigating general wildfire spread, such as building standards and community-wide vegetation management standards, are developed, and enforced by state and local government entities with the appropriate authority. VMUS, in its role as an electric utility, does not have authority over these strategies and the WMP is not an appropriate planning document for developing these requirements. Instead, VMUS will follow the requirements and guidance of the appropriate authorities.

## ***C. WILDFIRE RESPONSE AND RECOVERY***

VMUS field staff utilize hard line telephones, cellular telephones, and portable radios to communicate with internal and external stakeholders during an outage or emergency. VMUS' Outage Management System auto generates notifications to field and administrative staff. The City of Victorville maintains a two-way UHF band radios for communications enhanced by two DMR repeaters to extend the coverage area. The City radios can have up to 1,024 channels; of which twenty are currently programmed channels (eleven use repeaters and nine are simplex).

The City of Victorville owns one Iridium satellite phone that is issued to the City's Emergency Management Coordinator or his designee during an emergency. VMUS, along with other key City personnel, have access to a Government Emergency Telecommunications Services (GETS) card and

PIN provided by Homeland Security to allow for the capability to respond to National Security and Emergency Preparedness (NS/EP) events. Using the Wireless Priority Services (WPS) with GETS can increase the probability of a call completion in both wireless and wireline networks.

In addition to the City of Victorville Fire Department, Mission Fire Rescue (Mission) services the Southern California Logistics Airport. VMUS and airport staff are able to communicate with Mission Fire Rescue through 400-megahertz radios or by calling their station directly. Additionally, the control tower has a direct line to Mission's fire station, which rings throughout the station and opens the bay doors alerting them of an emergency.

CONFIRE provides dispatch services for the City of Victorville Fire Department and Mission. They have the capability of patching in Apple Valley Fire Protection District, CAL FIRE, and contacting several other agencies such as Southwest Gas, Southern California Edison, AMR and other local agencies to assist in an emergency. CONFIRE also functions as the operational area dispatch for the County of San Bernardino and can coordinate mutual aid as needed.

At the county level, a San Bernardino County Emergency Operations Center (EOC) talk group is programmed into an 800-megahertz frequency band radio and is used to communicate with EOCs within San Bernardino County during a disaster or emergency. The City of Victorville contracts with San Bernardino County Sheriffs. They too utilize 800-megahertz frequency band radios to communicate and have the capability to patch in California Highway Patrol, CAL FIRE, and other county resources to assist during emergencies.

City of Victorville also maintains a reporting hotline to notify the city for code violations, hazards, safety concerns, and overgrown landscaping and weeds. Additionally, the City allows its constituency to report any code violations online via the City's website. VMUS adheres to California Public Utility Commission GO 95, 165, and 174 for all system infrastructure inspection, maintenance, and reporting.

#### ***D. STANDARDIZED EMERGENCY MANAGEMENT SYSTEM***

As a local governmental agency<sup>3</sup>, VMUS has planning, communication, and coordination obligations pursuant to the California Office of Emergency Services' Standardized Emergency Management System (SEMS) Regulations<sup>4</sup>, adopted in accordance with Government Code section 8607. Any communications by VMUS during an active emergency, such as a wildfire, will be in accordance with SEMS and will be at the direction of the entity responsible for disseminating information about the emergency.

The SEMS Regulations specify roles, responsibilities, and structures of communications at five different levels: field response, local government, operational area, regional, and state.<sup>5</sup> Pursuant to this structure,

---

<sup>3</sup> As defined in Cal. Gov. Code § 8680.2

<sup>4</sup> 19 CCR § 2407

<sup>5</sup> Ca. Gov. Code § 2403(b):

[1] "Field response level" commands emergency response personnel and resources to carry out tactical decisions and activities in direct response to an incident or threat.

[2] "Local government level" manages and coordinates the overall emergency response and recovery activities within their jurisdiction.

[3] "Operational area level" manages and/or coordinates information, resources, and priorities among local governments within the operational area and serves as the coordination and communication link between the local government level and the regional level.

[4] "Regional level" manages and coordinates information and resources among operational areas within the mutual aid region designated pursuant to Government Code §8600 and between the operational areas and the state level. This level along with the state level coordinates overall state agency support for emergency response activities.

[5] "State level" manages state resources in response to the emergency needs of the other levels, manages and coordinates mutual aid among the mutual aid regions and between the regional level and state level, and serves as the coordination and communication link with the federal disaster response system.

VMUS annually coordinates and communicates with the relevant safety agencies as well as other relevant local and state agencies. When activated, VMUS serves as the Utilities Unit Leader under the Operations Section Chief as part of the City Victorville Emergency Operations Center. In the event that the incident centered on VMUS facilities, VMUS would serve as the Operations Section Chief.

Under the SEMS structure, a significant amount of preparation is done through advanced planning at the county level, including the coordination of effort of public, private, and nonprofit organizations. San Bernardino County serves as the Operational Area and is guided by the California Office of Emergency Services Southern Region. The Operational Area includes local and regional organizations that bring relevant expertise to the wildfire prevention and recovery planning process. These participants are listed below:

<b>Agency</b>	<b>Address</b>	<b>Contact</b>	<b>Phone No.</b>
AMR, American Medical Response	14828 7 <sup>th</sup> Street Victorville, CA 92392	Administration	760.952.7400
Kaiser Permanente High Desert Medical Offices	14011 Park Ave. Victorville, CA 92392	Administration	833.574.2273
St. Mary's Hospital Medical Center	18300 Highway 18 Apple Valley, CA 92307	Administration	760.242.2311
Desert Valley Hospital	16850 Bear Valley Rd. Victorville, CA 92395	Administration	760.241.8000
Victorville Municipal Utility Services	18374 Phantom West Victorville, CA 92394	Hotline	877.760.8687
Victorville Municipal Utility Services	18374 Phantom West Victorville, CA 92394	Administration	760.243.6340
Victorville Municipal Utility Services – Management	18374 Phantom West Victorville, CA 92394	Director of Utilities	760.243.6341
Victorville Fire Department	14343 Civic Drive Victorville, CA 92392	Fire Chief	760.955.5233
Victorville Fire Department	14343 Civic Drive Victorville, CA 92392	Division Chief	760.955.5231
Victorville Fire Department	14343 Civic Drive Victorville, CA 92392	Emergency Medical Services Coordinator	760.955.5237
Victorville Fire Department	14343 Civic Drive Victorville, CA 92392	Emergency Management Coordinator	760.243.6344
SCLA – Airport Operations	18374 Phantom West Victorville, CA 92394	Hotline	760.243.1915
SCLA Management	18374 Phantom West Victorville, CA 92394	Airport Director	760.243.1910
Victorville – Police Department	14176 Amargosa Rd. Victorville, CA 92392	Police Chief	760.241.2911
Victorville – Public Works	14177 Mc Art Rd. Victorville, CA 92392	Director	760.243.6332
Victorville – City Management	14343 Civic Drive Victorville, CA 92392	City Manager	760.955.5029
Victorville – City Management	14343 Civic Drive Victorville, CA 92392	PIO	760.955.5028
Victorville – Traffic & Transportation	14343 Civic Drive Victorville, CA 92392	Traffic Engineer	760.955.5156
San Bernardino County: Dept. of Environmental Health	385 N. Arrowhead Ave. #2 San Bernardino, CA 92415	Administration	800.782.4264
Mission Aviation Fire Rescue	1055 E. 3 <sup>rd</sup> Street Corona, CA 92879	Administration	844.321.2733
Mission Aviation Fire Rescue – Station 319	18550 Readiness St. Victorville, CA 92394	Fire Chief	760.246.6479

Pursuant to the SEMS structure, VMUS participates in annual training exercises. Training exercises include workshops and tabletop exercises. A sample of topics covered include earthquake safety, disaster response & management, and NIMS/SEMS/ICS compliance.

#### **IV. WILDFIRE RISKS AND DRIVERS ASSOCIATED WITH DESIGN, CONSTRUCTION, OPERATION, AND MAINTENANCE**

##### **A. PARTICULAR RISKS AND RISK DRIVERS ASSOCIATED WITH TOPOGRAPHIC AND CLIMATOLOGICAL RISK FACTORS**

Due to VMUS's distribution system being 100% underground, the primary risk drivers for wildfire within VMUS's service territory are the following:

- Earthquake
- Flooding

##### **B. ENTERPRISE-WIDE SAFETY RISKS**

Earthquake profile - There are two major faults/fault zones that directly affect VMUS. They are the San Andreas Fault and the Helendale Fault zones. The City of Victorville sits in the middle of both faults. The San Andreas Fault is the longest fault in California and is known to cause powerful earthquakes, as big as a magnitude eight (8.0).<sup>6</sup> This fault is located south-west of Victorville. The Helendale Fault creates smaller, yet more frequent earthquakes and is located northeast of the city. The most recent major earthquake to affect the City of Victorville was the Ridgecrest earthquake, approximately 82 miles north of the city. This earthquake struck July 5, 2019 and had a magnitude of 7.1.

Large earthquakes occurring in many parts of the Southern California region could affect the City of Victorville. However, the degree to which the earthquakes are felt, and the damages associated with them may vary. At risk from earthquake damage are critical facilities, buildings, bridges, highways and roads; hazardous materials facilities; sewer, water, natural gas pipelines; earth dams; petroleum pipelines; and private property located in the city. The relative or secondary earthquake hazards, which are liquefaction, ground shaking, amplification, and earthquake-induced landslides, can be just as devastating as the earthquake.

Flooding profile - There are four types flooding conditions that exist within the City of Victorville area; flooding in defined watercourses; ponding; sheet flow; and dam inundation. Flooding within defined watercourses occurs within drainage channels and immediately adjacent floodplains. Ponding occurs when water flow is obstructed due to manmade obstacles and other roadways, where they cross-defined watercourses. Sheet flow occurs when capacities of defined watercourses are exceeded, and water flows over broad areas.

---

<sup>6</sup> <https://www.earthquakeauthority.com/California-Earthquake-Risk/Faults-By-County>

Known flood-prone areas noted in the General Plan as well as recorded in city maintenance files, include:

<b>DIR</b>	<b>STREET</b>	<b>DISTANCE</b>	<b>DIRECTION</b>	<b>CROSS STREET</b>	<b>DIR</b>
<b>N/S</b>	Rancho Rd			Manning St	W/B
<b>S/S</b>	Rancho Rd	100	E/O	EL Evado Rd	E/B
<b>W/S</b>	Enramada Rd	100	N/O	Cahuenga Rd	S/B
<b>E/S</b>	Enramada Rd	150	S/O	Cahuenga Rd	S/B
<b>E/S</b>	Cahuenga Rd	150	N/O	Hopland St	N/B
<b>/S</b>	El Evado			Figueroa Rd	S/B
<b>E/S</b>	El Evado	100	N/O	Tawney Ridge Ln	N/B
<b>S/S</b>	Clovis St	350	W/O	Orick Pl	E/B
<b>N/S</b>	Clovis St			Orick Pl	W/B
<b>N/S</b>	Eto Camino Rd	25	E/O	Barranca Way	W/B
<b>S/S</b>	Eto Camino Rd	25	E/O	Cazadero Rd	E/B
<b>S/S</b>	Tawney Ridge Ln	20	E/O	Sueno Ln	E/B
<b>N/S</b>	Tawney Ridge Ln			GreenHill Dr.	W/B
<b>N/S</b>	La Mesa Rd	40	W/O	Pacoima Rd	W/B
<b>E/S</b>	Amethyst Rd	100	S/O	Sierra Rd	N/B
<b>S/S</b>	Bear Valley Rd	300	E/O	Amethyst Rd	N/B
<b>N/S</b>	Bear Valley Rd	150	W/O	Dunia Rd	W/B
<b>W/S</b>	Avalon Rd	20	N/O	Molino Dr.	S/B
<b>E/S</b>	Avalon Rd	75	N/O	Hughes Rd	N/B
<b>N/S</b>	Hughes Rd	150	E/O	Avalon Rd	W/B
<b>S/S</b>	Hughes Rd	700	W/O	Avalon Rd	E/B
<b>S/S</b>	Pebble Beach Dr.	25	W/O	Arrowhead Dr.	E/B
<b>N/S</b>	Pebble Beach Dr.	300	E/O	Arrowhead Dr.	W/B
<b>W/S</b>	1st Ave			Talpa St	S/B
<b>N/S</b>	1st Ave	50	E/O	Dean Ave	W/B
<b>W/S</b>	2nd Ave	50	S/O	Talpa St	S/B
<b>E/S</b>	2nd Ave	25	N/O	Kayuga St	N/B
<b>N/S</b>	Kayuga St	50	W/O	2nd Ave	W/B
<b>S/S</b>	Kayuga St	50	E/O	3rd Ave	E/B
<b>S/S</b>	Ponca St	50	E/O	3rd Ave	E/B
<b>N/S</b>	Ponca St	25	W/O	2nd Ave	W/B
<b>E/S</b>	Dean Ave	100	S/O	Calcite Ave	N/B
<b>W/S</b>	Dean Ave	50	N/O	Grant St	S/B
<b>W/S</b>	Calcite Ave	25	N/O	Calcite Pl	S/B
<b>E/S</b>	Calcite Ave	300	S/O	Dean Ave	N/B

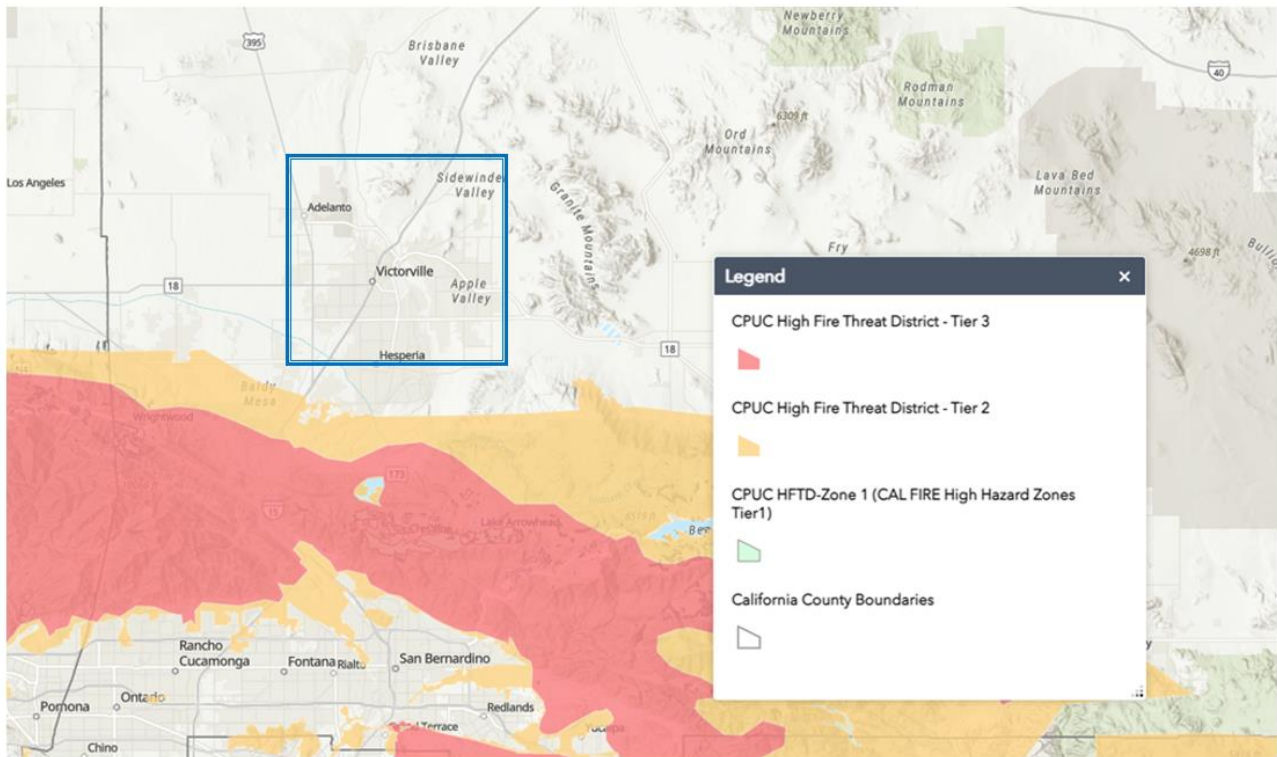
<b>W/S</b>	Cobalt Rd	25	S/O	Palmdale Rd	S/B
<b>E/S</b>	Cobalt Rd	25	N/O	Cameron St	N/B
<b>N/S</b>	Luna Rd	200	W/O	Topaz Rd	W/B
<b>S/S</b>	Luna Rd	200	E/O	HWY 395	E/B
<b>W/S</b>	Cantina Dr.	100	S/O	La Mesa Rd	S/B
<b>E/S</b>	Cantina Dr.	400	N/O	Bear Valley Rd	N/B
<b>S/S</b>	Bear Valley Rd	300	E/O	HWY 395	E/B
<b>S/S</b>	Bear Valley Rd	400	E/O	Topaz Rd	E/B
<b>N/S</b>	Bear Valley Rd	500	E/O	Topaz Rd	W/B
<b>W/S</b>	Cobalt Rd	500	N/O	Bear Valley Rd	S/B
<b>W/S</b>	Cobalt Rd	50	S/O	Bear Valley Rd	S/B
<b>E/S</b>	Cobalt Rd			Homestead Dr.	N/B
<b>E/S</b>	Cobalt Rd	200	N/O	Sycamore St	N/B
<b>S/S</b>	Sycamore St	200	E/O	Richmond Ave	E/B
<b>N/S</b>	Sycamore St	20	E/O	Chisholm Tr.	W/B
<b>N/S</b>	La Mesa Rd	50	W/O	Wrangler Ln	W/B
<b>S/S</b>	La Mesa Rd	200	W/O	Stanford Dr.	E/B
<b>S/S</b>	La Mesa Rd	100	E/O	Mesa Linda Ave	E/B
<b>W/S</b>	Monte Vista Rd	300	S/O	Palmdale Rd	S/B
<b>N/S</b>	Bear Valley Rd	350	W/O	HWY 395	W/B
<b>S/S</b>	Bear Valley Rd	200	E/O	Monte Vista Rd	E/B
<b>E/S</b>	Monte Vista Rd	300	S/O	Maricopa Rd	N/B



## V. WILDFIRE PREVENTATIVE STRATEGIES

### A. LOW FIRE THREAT DISTRICT

The CPUC's Fire Threat Map includes three Tiers/Levels of fire threat risk. Tier 1 consists of areas that have the lowest hazards and risks, tier 2 consists of areas where there is an elevated risk for destructive electric line-ignited wildfires, and tier 3 consists of areas where there is an extreme risk for destructive electric line-ignited wildfires. The City of Victorville is located in Tier 1. Despite the city's classification of Tier 1, VMUS is cognoscente of the potential dangers; and therefore, VMUS has and will continue to construct its entire distribution system underground and limit overhead construction to sub-transmission interconnections.



<https://capuc.maps.arcgis.com/apps/webappviewer/index.html?id=5bdb921d747a46929d9f00dbdb6d0fa2>

Additionally, VMUS customers are unlikely to be directly impacted by an investor-owned utility (IOU) public safety power shutoff (PSPS) event because VMUS is not on the Southern California Edison's PSPS circuit.

### B. DESIGN AND CONSTRUCTION STANDARDS

VMUS' electric facilities are designed and constructed to meet or exceed the relevant federal, state, or industry standard. VMUS treats CPUC General Orders (GO) 95 and 128 as a key industry standard for design and construction standards for underground electrical facilities. VMUS meets or exceeds all standards in GO 95 and 128. Additionally, VMUS monitors and follows, as appropriate, the National Electric Safety Code.



### **C. VEGETATION MANAGEMENT**

VMUS meets or exceeds the minimum industry standard vegetation management practices. For distribution level facilities, VMUS meets: (1) Public Resources Code section 4292; (2) Public Resources Code section 4293; (3) CPUC GO 95, 128, 165, and 174. VMUS' annual budget includes funding for weed abatement to ensure compliance with the standard vegetation management practices. VMUS' system is almost entirely underground; thus the system has minimal to no vegetation risks. Any overhead construction in the VMUS system is built in areas with no vegetation.

### **D. INSPECTIONS**

VMUS meets or exceeds the minimum inspection requirements provided in CPUC GO 165 and 174. As described above, VMUS currently has 7 sub-transmission power poles and no overhead distribution power lines located within or near a Tier 2 or Tier 3 Fire Threat District; however, VMUS staff uses their knowledge of the specific environmental and geographical conditions of VMUS' service territory to determine if any particular areas require more frequent inspections. Due to small size of the VMUS electrical system, staff is able to inspect the entire system on an almost daily basis.

If VMUS staff discovers a facility in need of repair that is owned by an entity other than VMUS, VMUS will issue a notice to repair to the facility owner and work to ensure that necessary repairs are completed promptly.

### **E. RECLOSING POLICY**

VMUS' electrical system is primarily underground and has no automatic re-closures in service. In a relayed event, re-closures will be handled on a case-by-case basis after circuit and equipment inspections have been performed.

### **F. DE-ENERGIZATION**

VMUS has the authority to preemptively shut off power due to fire-threat conditions; however, this option will only be used in extraordinary circumstances. Due to the minimal risk of VMUS' electrical supply facilities causing a power-line ignited wildfire, VMUS is not adopting specific protocols for de-energizing any portions of its electric distribution system. VMUS will re-evaluate this determination in future updates to this Wildfire Mitigation Plan.

### **G. COMMUNITY OUTREACH AND PUBLIC AWARENESS**

Due to the small proximity of our customer base, we are able to keep in close contact with our customers via email or phone call. Our Customer Contact list is updated annually to ensure that the contact information that is on file is the most up to date. We utilize this contact list to inform our customers of any planned outages and to deliver any other pertinent information.

## **VI. RESTORATION OF SERVICE**

VMUS' electric distribution system is completely underground. However, we are interconnected with SCE's transmission and distribution systems, much of which is overhead and exposed to wind, rain and lightning.

This is our primary source of vulnerability to potential electrical service interruptions during rain and windstorms such as the ones that can be precipitated by El Niño.

Our underground electric distribution system is designed, and has been constructed, with redundant sources of feed. These do not guarantee the elimination of outages but can facilitate service restoration and reduce the duration of such outages. VMUS is in compliance with all relevant federal, state and local resource planning standards, including contingencies for generation and transmission losses or outages due to any unplanned event.

Preparation in advance of predicted storms: Since, as discussed in the introduction, our primary trouble source during storms is outages on SCE's transmission and distribution lines, many of which are overhead, we will patrol, to the extent practical, SCE's primary interconnect lines for any potential trouble spots or vulnerabilities. We will also double check the loading conditions of our underground lines to satisfy ourselves that alternate sources have the capacity to serve the electric load (customers) in the event that it is necessary.

Our underground system will be patrolled in advance of storms for any open trenches or excavations at construction sites to minimize water intrusion into the underground system. Although the underground system is designed to operate under such conditions, small pinholes in splices or cable can cause problems, including possible electrical shorts/faults that can interrupt service to customers. Likewise, after the storm, each underground vault, manhole or other structure will be inspected for water intrusion and pumped, when necessary, in accordance proper utility practice and environmental guidelines.

All vehicular equipment, tools, and appurtenances will be thoroughly inspected for proper operation. All operating personnel will be placed on standby in the event of weather-related problems. The VMUS operations and admin staff will be prepared for handling of trouble calls from customers and dispatching to field personnel.

Call Center support includes:

- Outage Management System (OMS)
- Field Dispatching
- Coordinating with VMUS' Qualified Emergency Electrical contractors
- Customer Callbacks

Response Prioritization:

- First Priority: Response to imminent threats to life and/or public property
- Second Priority: Removals of immediate hazards (fallen trees, power poles, etc.)
- Third Priority: Clearing of arterial roadways
- Fourth Priority: Maintenance of traffic control/closures to prevent potential accidents
- Fifth Priority (Post Storm Activity): Follow-up work such as addressing storm-related potholes and residual clean-up of all streets that have remained in a "passable and drivable" state

Referral Protocol:

- Flooding of structures on private property- Businesses will be advised to call 911 for Fire Department assistance
- Facilities associated with private utilities will be referred to appropriate company
- All storm related issues involving streets, curbs and gutters, sidewalks, trees in the right of way, catch basins, and miscellaneous drainage facilities will be referred to the City's Maintenance and Operations Division.

During EOC activation period, all routine maintenance programs and requests will be suspended and deferred.

## VII. PLAN EVALUATION

### A. METRICS AND ASSUMPTIONS FOR MEASURING PLAN PERFORMANCE

VMUS will track the following metric to measure the performance of this Wildfire Mitigation Plan:

Number of fire ignitions caused by utility equipment.

#### 1. *Metric 1: FIRE IGNITIONS*

For purposes of this metric, a fire ignition is defined as follows:

- VMUS facility was associated with the fire;
- The fire was self-propagating and of a material other than electrical and/or communication facilities;
- The resulting fire traveled greater than one linear meter from the ignition point; and
- VMUS has knowledge that the fire occurred.

In future Wildfire Mitigation Plans, VMUS will provide the number of fires that occurred that were less than one (1) acre in size within VMUS' service territory. Any fires greater than one acre will be individually described.

**B. IMPACT OF METRICS ON PLAN**

<b>WMP Metrics [No Risk or Minimal Risk POUs and Co-ops]</b>								
<b>Performance Metrics</b>								
Metric type	Progress metric name	(Actual)	(Actual)	(Forecast)	(Forecast)	(Forecast)	Unit(s)	Comments
		2021	2022	2023	2024	2025		
1. Above-Ground, Utility-Owned Distribution System Components	Routine Inspections	0	0	0	0	0	0 inspections	System is completely underground
2. Distribution Inspections	Patrol Inspections	52	52	52	52	52	21 circuit miles	Inspections are done weekly
	Routine Vegetation Management	4	4	4	4	4	21 circuit miles	Inspections are done quarterly
3. Transmission Inspections	Patrol Inspections	52	52	52	52	52	21 circuit miles	Inspections are done weekly
	Routine Vegetation Management	4	4	4	4	4	21 circuit miles	Inspections are done quarterly
<b>Outcome Metrics</b>								
Event Category	Cause category	(Actual)	(Actual)	(Actual)	(Actual)	(To Date)	Unit(s)	Comments
		2019	2020	2021	2022	2023		
Outage Event	Distribution	0	0	0	0	0	0 outages	
	Transmission	0	0	0	0	0	0 outages	
Ignitions*	Distribution	0	0	0	0	0	0 ignitions	
	Transmission	0	0	0	0	0	0 ignitions	
[Level 1] Safety Hazards**	Distribution	0	0	0	0	0	0 hazards discovered	
	Transmission	0	0	0	0	0	0 hazards discovered	

**Notes:**  
 \* An "ignition" is deemed to occur if each of the following conditions is met: (1) a utility owned or controlled facility was associated with the fire; (2) the fire was self-propagating and of a material other than electrical and/or communication facilities; (3) the resulting fire traveled greater than one linear meter from the ignition point; and (4) the utility has knowledge that the fire occurred.  
 \*\* A [Level 1] Safety Hazard is defined as \_\_\_\_\_.

**C. MONITORING AND AUDITING THE PLAN**

This Wildfire Mitigation Plan will be presented to the Victorville City Council. VMUS staff will review the plan on an annual basis and bring updates to the Council as needed.

**D. IDENTIFYING AND CORRECTING DEFICIENCIES IN THE PLAN**

There has been no need to correct or change any processes of the plan due to zero wildfire threats causing outages or ignitions. Any deficiencies identified during subsequent reviews and independent evaluations of the plan will be promptly corrected.

**E. MONITORING THE EFFECTIVENESS OF INSPECTIONS**

VMUS' Utility Maintenance Management System (UMMS) is used to collect all data subject to GO165.

Quarterly inspection and maintenance reports are generated for all electric distribution facilities. Maintenance history for each piece of equipment is archived in the UMMS. Additionally, VMUS' substation inspection and maintenance program complies with GO174 guidelines as well as manufacturer specifications, standards, and recommendations. VMUS performs regular inspections of all substation components including recording and analysis of all alarms, fluid levels, meters, and Load Tap Changer settings.

Although VMUS does not fall under the jurisdiction of the California Public Utilities Commission (CPUC), VMUS would cooperate with the CPUC's Utilities Safety and Reliability Branch and their requests for periodic audits.

## VIII. Public & Professional Feedback

### ***A. CMUA – Wildfire Preparedness, Response and Recovery Working Group***

The California Municipal Utilities Association (CMUA) will be holding a special meeting of its Wildfire Preparedness, Response, and Recovery Working Group this fall, which will be focused on risk drivers for powerline caused catastrophic wildfires and innovative mitigation options. CMUA plans to invite a broad range of utility staff, state agency staff (including the WSAB), industry experts, and academics to participate in this discussion. As part of this meeting, the working group will discuss unidentified wildfire risk drivers and mitigation measures that could address these risks. Based on the input provided during this meeting, CMUA will produce a publicly available, post-meeting report that summarizes the group's conclusions and recommendations. VMUS' staff will participate in CMUA's meeting and will discuss any changes that VMUS has made to its operations in response to the conclusions and recommendations of the working group in a future WMP.

### ***B. Public Input Process***

VMUS is governed by the Victorville City Council. This plan was brought forth to the City Council and members of the public on June 21 2022. Due to the adoption of the plan not requiring a notice of public hearing or any special noticing requirements, the noticing of the plan followed the City's standards per the Brown Act. The agenda was posted a week in advance and public comment is a section of the agenda where members of the public can speak freely on any item on the agenda. Members of the public are given three minutes to speak on their items; at the time of the plan's adoption, there were no speakers.

The next adoption of the plan by the Victorville City Council will be in 2024. At this time, VMUS will engage the public via a comment box on the City's website with a draft plan, seeking public review and suggestions; any suggestions provided will be discussed and incorporated into the plan as needed. Staff will advise customers via email of the availability to review the plan and provide feedback.

<sup>1</sup> Appendix I: 2021 Informational Response has been removed as the information has been incorporated into the overall plan, per the California Wildfire Safety Advisory Board.