



February 26, 2026

Daniel Kushner
Senior Director, Electric Risk & Compliance
Pacific Gas and Electric Company
300 Lakeside Drive
Oakland, CA 94612

NOTICE OF NON-PERFORMANCE

Mr. Kushner:

Pursuant to Government Code section 15472, et seq, the Office of Energy Infrastructure Safety (Energy Safety) has conducted an inspection of work completed by Pacific Gas and Electric Company (PG&E) in accordance with its 2025 Wildfire Mitigation Plan (WMP) and determined the existence of non-performance requiring correction. Energy Safety therefore issues PG&E a Notice of Non-Performance (NON), identifying non-performance with its approved WMP.

On December 16, 2025, Energy Safety conducted an inspection of PG&E's WMP initiatives in the vicinity of the city of Angwin, California. The inspection report is enclosed herewith. Energy Safety found the following deficiencies:

Deficiency 1. Energy Safety observed that in implementing the 2025 WMP initiative - 8.1.2.10.5 - Non-Exempt Expulsion Fuses, PG&E failed to complete the installation of a non-exempt expulsion fuse on Pole ID 256495, Grid Hardening ID 31699597 at coordinates 38.5593907604486, -122.433882999691. Energy Safety considers this non-performance to be in the Minor risk category. PG&E must complete a corrective action for this deficiency by 12 months of this notice.

Within 30 days from the issuance date of this NON, the electrical corporation must provide a response advising Energy Safety of corrective actions taken or planned to remedy the identified deficiency or deficiencies.

This response shall be filed in the Energy Safety e-Filing system under the 2025 NON Docket,¹ and the associated file name(s) must begin with the NON identification number.

Prior to its response, the electrical corporation may request an informal conference with Energy Safety for the purpose of disputing any issues raised in this NON no later than 10 business days before the response

¹ <https://efiling.energysafety.ca.gov/EFiling/DocketInformation.aspx?docketnumber=2025%20NON>

deadline.² Requests for informal conference with Energy Safety must be e-mailed to AssetPerformance@energysafety.ca.gov, with a copy sent to all Energy Safety staff identified in the NON.

Sincerely,

Patrick Doherty

Patrick Doherty
Program Manager | Performance Assessment Division
Office of Energy Infrastructure Safety
Patrick.Doherty@energysafety.ca.gov

Cc:

Wade Greenacre, PG&E

WAG9@pge.com

Mandy Knockaert, PG&E

ARKN@pge.com

Electric Data Requests

ElectricDataRequests@pge.com

Romeo Marroquin Ajcac, Energy Safety

Romeo.MarroquinAjcac@energysafety.ca.gov

Yana Loginova, Energy Safety

Yana.Loginova@energysafety.ca.gov

Babak Kaviani, Energy Safety

Babak.Kaviani@energysafety.ca.gov

Samuel Isaiah, Energy Safety

Samuel.Isaiah@energysafety.ca.gov

Shannon Greene, Energy Safety

Shannon.Greene@energysafety.ca.gov

assetperformance@energysafety.ca.gov

² Energy Safety Performance Guidelines, p. 4



INSPECTION REPORT

Overview

Inspection Categories

The Office of Energy Infrastructure Safety (Energy Safety) conducts inspections to verify the work performed by an electrical corporation as reported in an approved Wildfire Mitigation Plan (WMP) or subsequent filing, and to assess general conditions of electrical infrastructure that may adversely impact an electrical corporation’s wildfire risk.

A Notice of Non-Performance (NON) is issued for any deficiencies discovered during an inspection related to an electrical corporation’s performance of its WMP.

Correction Timelines

Deficiencies must be corrected in a timely manner. Energy Safety may prescribe a timeframe for resolution of a deficiency.³ If Energy Safety assigns a risk category to a deficiency, an electrical corporation must correct the deficiency as required per the timelines provided in Table 1.⁴

Table 1. Risk Category and Correction Timelines

Risk Category	Deficiency correction timeline
Severe	<ul style="list-style-type: none">• Immediate resolution
Moderate	<ul style="list-style-type: none">• 2 months (in High Fire Threat District (HFTD) Tier 3)• 6 months (in HFTD Tier 2)• 6 months (if relevant to worker safety; not in HFTD Tiers 2 or 3)
Minor	<ul style="list-style-type: none">• 12 months or resolution scheduled in WMP update

³ Gov. Code section 15475.2(a)(2)

⁴ Energy Safety Performance Guidelines, p. 4



Inspection Summary

Table 2 provides a summary of the selection of the WMP inspection location and initiative. Table 3 provides a summary of the deficiency or deficiencies found during the inspection. Details regarding the inspection that identified the deficiency or deficiencies are provided in the Inspections Details Section below.

Table 2: Inspection Location and Initiative Summary

Electrical Corporation:	Pacific Gas and Electric Company
Report Number:	PAD_PGE_RMA_20251216_1412
Inspector:	Romeo Marroquin Ajcac
WMP Year Inspected:	2025
Quarterly Data Report (QDR) Referenced:	Quarter 2 (Q2)
Inspection Selection:	Energy Safety viewed the contents of the Q2 QDR and performed an analysis that resulted in the selection of the WMP initiatives and locations referenced in this report.
Relevant WMP Initiative(s):	8.1.2.10.5 - Non-Exempt Expulsion Fuses
Date of Inspection:	December 16, 2025
City and/or County of Inspection:	250-376 Cold Springs Rd, Angwin, CA, 94508, USA, Napa County
Inspection Purpose:	Assess the accuracy of Pacific Gas and Electric Company’s QDR data, completeness of its work, and performance of requirements.

Table 3: WMP Inspection Deficiencies

Deficiency #	Structure ID	Grid Hardening ID	Lat/Long	HFTD	Initiative Number	Severity	Deficiency Description
Deficiency 1	256495	31699597	38.559390, -122.433882	Tier 3	8.1.2.10.5 - Non-Exempt Expulsion Fuses	Minor	Failure to complete work on non-exempt expulsion fuses.

Inspection Details

Deficiency 1

Relevant Requirement:

PG&E's WMP states the following regarding initiative number 8.1.2.10.5:

1. "This program reduces the consequence of potential ignitions by replacement and/or removal of non-exempt fuses. In general, the risk of ignition associated to a fuse on a line is reduced through the complete removal and/or replacement of non-exempt equipment with exempt equipment. Fuses are intended to protect the main line of the distribution feeder from faults occurring on the laterals."⁵

Findings:

On Pole ID 256495, Grid Hardening ID 31699597 at 250-376 Cold Springs Rd, Angwin, CA, 94508, USA, 38.5593907604486, -122.433882999691, the inspector observed that an exempt fuse was not installed at the subject pole. The inspector's observation is documented in Deficiency 1 photographs, which are attached to this report. Photo numbers IA1Img1 and IA1Img2 depict incomplete installation of exempt equipment. In the 2025 Q2 Quarterly Data Report submission, PG&E reported that work on WMP initiative 8.1.2.10.5 - Non-Exempt Expulsion Fuses was completed at this location.

Energy Safety concludes that there is a deficiency because of these facts:

1. The inspector observed that an exempt fuse was not installed in the cutout at the subject pole.

⁵ Pacific Gas & Electric Company, "PG&E 2023-25 Approved Wildfire Mitigation Plan R8," February 13, 2025, p. 465. [Online]. Available: <https://efiling.energysafety.ca.gov/eFiling/Getfile.aspx?fileid=57976&shareable=true>

Exhibits

Exhibit A: Photo Log

Structure ID: 256495

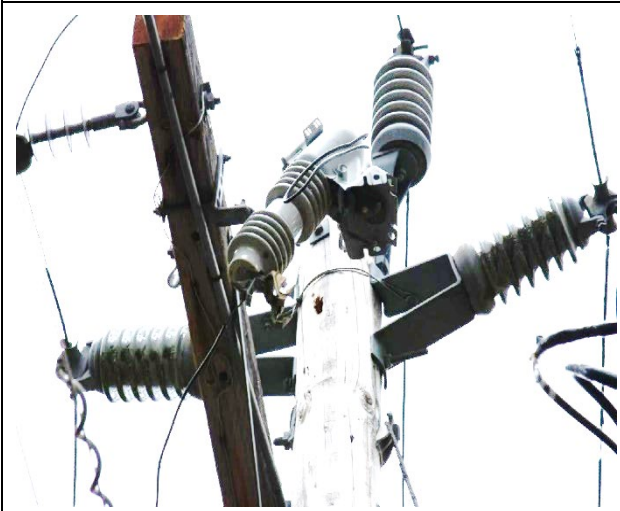
Deficiency 1



G1mg1: Overall structure



G1mg2: Structure ID



IA1mg1: Empty cutout.



IA1mg2: Empty cutout (close view).