

## Vegetation Management Distribution Inspection

### Attachment 2, EVM WMP Commitments

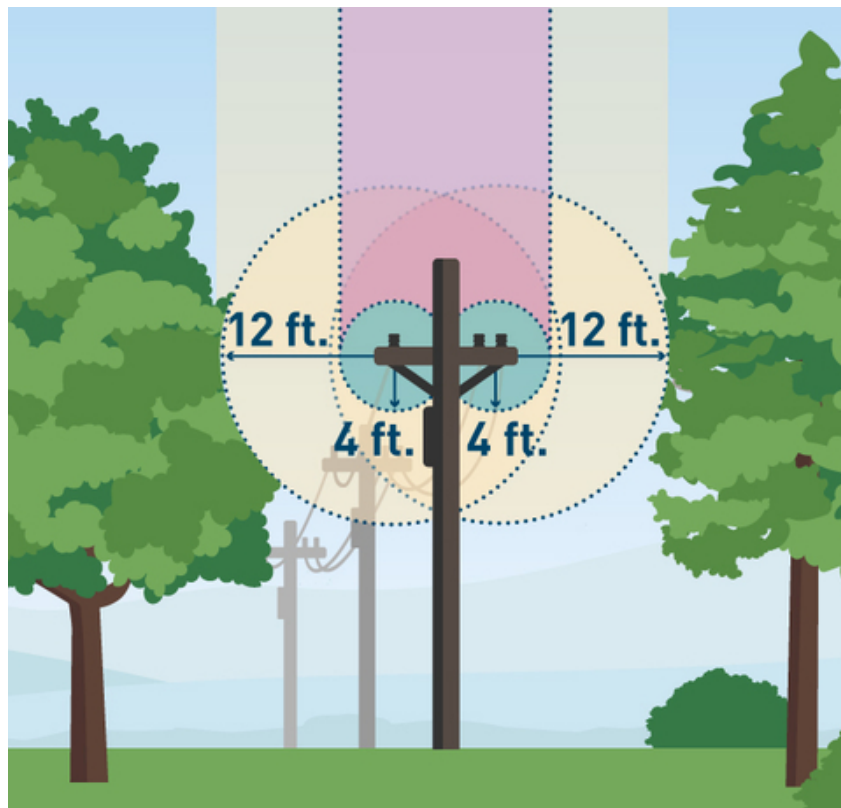
#### 1 Summary

The EVM Program concluded at the end of 2022. VM patrols now maintain the enhanced clearances achieved in EVM. PG&E has established routine maintenance requirements for electric distribution circuits where EVM scope clearances have been performed (in HFTD designated areas) and passed by work verification.

All electric distribution Circuit Protection Zones (CPZs) where the EVM scope clearances have been achieved previously must be prescribed for no less than 12 ft. of clearance. All overhanging vegetation that will encroach on the 4-ft. overhang plane before the next annual inspection cycle must be prescribed to remove all overhangs.

#### 2 Prescribing Work

1. PRESCRIBE work to maintain the following EVM clearances for the entire segment:
  - A clear vertical plane (clear to sky) of a minimum of 4 ft. from the outside conductor
  - EVM-required radial clearances of a minimum of 12 ft. at time of trim
2. DOCUMENT the EVM clearance work prescription into the system of record.



## Vegetation Management Distribution Inspection

### Attachment 2, EVM WMP Commitments

#### REVISION NOTES

Where?	What Changed?
Entire Document	Reviewed document as part of the distribution consolidation efforts.
Section 1	Organized original verbiage into a Summary section.
Section 2	Removed EVM clearance work prescription language from TD-7102P-01 "Vegetation Management Distribution Inspection," and placed it into this section.