

Adopted
06/06/23
Devine/Kassakhian
Absent: Najarian

RESOLUTION NO. 23-69

**A RESOLUTION OF THE COUNCIL OF THE CITY OF GLENDALE, CALIFORNIA
UPDATING GLENDALE WATER & POWER DEPARTMENT'S WILDFIRE
MITIGATION PLAN AND ADOPTING THE GLENDALE WATER & POWER
DEPARTMENT'S WILDFIRE MITIGATION PLAN – UPDATED 2023**

WHEREAS, California Senate Bill 1028, Senate Bill 901 and Assembly Bill 111, require electric utilities to maintain a formal Wildfire Mitigation Plan which plan shall include and set forth the utility's strategies and plans to mitigate against catastrophic wildfires; and

WHEREAS, Senate Bill 901, also requires publicly owned utilities to: 1) prepare a Wildfire Mitigation Plan; 2) have the Wildfire Mitigation Plan reviewed by a qualified independent evaluator to assess comprehensiveness; 3) present the Wildfire Mitigation Plan to the public in a noticed public hearing; 4) have the initial Wildfire Mitigation Plan adopted no later than January 1, 2020; and 5) update the Wildfire Mitigation Plan annually thereafter; and

WHEREAS, in 2019, the City of Glendale's Water & Power Department (GWP), a publically owned utility, in accordance with the mandates of Senate Bill 1028, Senate Bill 901 and Assembly Bill 111, prepared its Wildfire Mitigation Plan and had it undergo the required independent third party review to confirm that it meets all regulatory requirements; and

WHEREAS, GWP's Wildfire Mitigation Plan was presented to the public and subsequently adopted in December 2019; and

WHEREAS, on May 25, 2021, the City Council, by Resolution No. 21-66, adopted GWP's Wildfire Mitigation Plan – Updated 2021; and

WHEREAS, on June 28, 2022, the City Council, by Resolution No. 22-99, adopted GWP's Wildfire Mitigation Plan – Updated 2022; and

WHEREAS, GWP staff over the past year has reviewed the Wildfire Mitigation Plan to ensure its adequacy, has made updates as necessary, and has prepared a further updated Wildfire Mitigation Plan; and

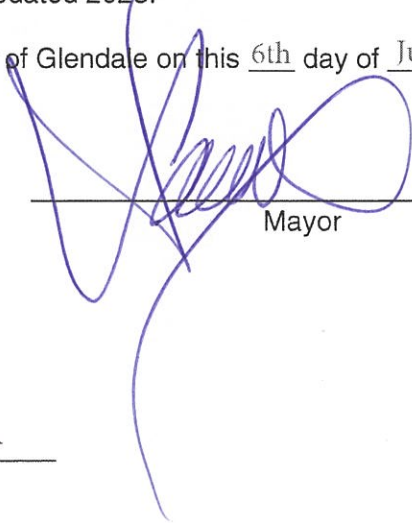
WHEREAS, GWP's 2023 updated Wildfire Management Plan, as described in the Report dated June 6, 2023 by the General Manager for GWP and which is attached hereto as Exhibit 1, includes, addresses, and implements, among other things, the following: California Public Utilities Commission (CPUC) wildfire threat maps developed to assess wildfire threat areas; Glendale Fire Department's Vegetation management Program (VMP) developed to ensure an adequate defensible space between structures and plants, brush or trees; and the application of the most appropriate engineering and operational solutions, depending upon the specific risks in each area.

NOW, THEREFORE, BE IT RESOLVED BY THE COUNCIL OF THE CITY OF GLENDALE, CALIFORNIA THAT:

Section 1. The City Council of the City of Glendale, in accordance with California Senate Bill 901, hereby adopts Glendale Water & Power Department's updated Wildfire Mitigation Plan, hereafter referred to and known as the Glendale Water & Power Department's Wildfire Mitigation Plan – Updated 2023, attached hereto as Exhibit 1.

Section 2. The City Council of the City of Glendale further directs the Glendale Water & Power Department to implement the Glendale Water & Power Department's Wildfire Mitigation Plan – Updated 2023.

Adopted by the Council of the City of Glendale on this 6th day of June, 2023.



Mayor

ATTEST:



City Clerk

STATE OF CALIFORNIA) SS.
COUNTY OF LOS ANGELES)

I, Suzie Abajian, PhD, City Clerk of the City of Glendale, hereby certify that the foregoing Resolution No. 23-69 was adopted by a majority vote of the Council of the City of Glendale, California, at a regular meeting held on the 6th day of June, 2023, and that the same was adopted by the following vote:

- Ayes: Asatryan, Devine, Kassakhian, Brotman
- Noes: None
- Absent: Najarian
- Abstain: None

APPROVED AS TO FORM



CITY ATTORNEY

DATE 6/20/23



City Clerk



**CITY OF GLENDALE, CALIFORNIA
REPORT TO THE CITY COUNCIL**

AGENDA ITEM

Report: Annual Update to Glendale Water and Power's (GWP's) Wildfire Mitigation Plan.

1. Resolution adopting Annual Update to Glendale Water and Power's (GWP's) Wildfire Mitigation Plan.

COUNCIL ACTION

Item Type: Action Item

Approved for June 6, 2023 **calendar**

EXECUTIVE SUMMARY

The City of Glendale and Glendale Water & Power Department ("GWP") recognize the potential loss of property and human life posed by wildfires is a growing concern. GWP has developed, implemented, and maintained a formal Wildfire Mitigation Plan ("WMP" or "Plan") since 2019, as required by Senate Bill (SB) 901. The objective of GWP's Wildfire Mitigation Plan is to engineer, construct, maintain, and operate the GWP electric transmission and distribution system in a manner intended to minimize the risk of catastrophic wildfire caused by electrical lines and equipment.

GWP's Wildfire Mitigation Plan describes solutions to mitigate the risk of wildfires ignited by its electrical assets. The plan focuses on two elements - ignition and spread - which together lead to a wildfire. GWP's efforts prioritize mitigating electrical assets that could ignite a wildfire in high-wildfire danger service areas of the City of Glendale. The plan aims to reduce the likelihood of ignition by adopting a risk-based methodology to prioritize mitigation of electrical assets and equipment that could ignite a wildfire. It also details various potential solutions, such as enhanced vegetation management practices, expanded asset inspections, fast-acting automatic protection schemes, and more, to reduce the risk of igniting or spreading wildfires. Overall, the plan aims to comply with SB 901 and other related mandates and minimize the risk of igniting and spreading wildfires.

The City's Wildfire Mitigation Committee, comprised of representatives from different City departments, meets quarterly, or as deemed necessary by the Committee, to measure the effectiveness of the program and to discuss additional implementation strategies to further enhance the program's success. The Wildfire Mitigation Plan updates included herein are the result of the evolving strategies the City is implementing to reduce the risk of wildfires within the City of Glendale.

COUNCIL PRIORITIES

Infrastructure: GWP's Wildfire Mitigation Plan applies engineering and operational solutions to harden its electric distribution infrastructure and reduce the risk of wildfires.

RECOMMENDATION

Adopt the annual update to GWP's Wildfire Mitigation Plan.

BACKGROUND

California Senate Bill 102, SB 901, and Assembly Bill (AB) 111 require electric utilities to maintain a formal Wildfire Mitigation Plan ("WMP" or "Plan") that includes the utility's strategies and plans to mitigate against catastrophic wildfires. SB 901 requires publicly owned utilities, including GWP, to (1) prepare such a plan, (2) have the plan reviewed by a qualified independent evaluator to assess comprehensiveness, (3) present the plan in a noticed public meeting, (4) have the plan adopted, and (5) update the plan annually thereafter.

GWP's Plan considers and includes all required and necessary elements of SB 901 including, but not limited to, an accounting of responsibilities of persons responsible for executing the plan, a description of preventive strategies and programs to minimize the risk of its electrical equipment causing catastrophic wildfires, protocols for de-energizing portions of the electrical distribution system, and its plans for vegetation management.

Highlights from the Plan:

1. The California Public Utility Commission (CPUC) wildfire threat maps were developed by CalFire to assess wildfire threat areas throughout California. 62% of the City of Glendale is within an elevated or extreme wildfire zone.
2. Glendale Fire Department's Vegetation Management Program (VMP) was developed to ensure buildings and structures maintain an adequate defensible space between structures and plans, brush or trees that could catch the structure on fire. Proper application of the VMP reduces the rate and intensity of fires if they were to ignite, which minimizes the risk of catastrophic wildfire spreading within the City.
3. The VMP aims to limit the rate and intensity of the spread, so GWP can focus its efforts on limiting ignitions where the VMP does not reach. This approach means GWP can focus its efforts on 0.47% of the City where GWP's electrical assets exist (versus 62% as identified by the CPUC) to minimize ignition source where a fire would be more likely to spread if it were to ignite.
4. GWP's wildfire mitigation efforts, pursuant to its Plan, will apply the most appropriate engineering and operational solutions depending upon the specific risks in each area: a solution that works well in one area may not be the correct solution elsewhere, so an engineering analysis will be applied to each area to ensure the most effective mitigation measures are applied.

5. Per SB 901, a third-party independent evaluator is needed every three years for the comprehensive review of the Plan. This year, staff updated this Plan comprehensively and contracted with Guidehouse Consulting, Inc., to review and assess the comprehensiveness of the Plan and incorporated the recommendations from the assessments in finalizing the Plan. The Guidehouse report confirms that GWP's Plan meets all regulatory requirements.
6. On April 12, 2023, the City's Wildfire Mitigation Committee Members, comprised of representatives from different City departments, had a meeting and prepared the 2023 annual update to the plan for City Council review and adoption.

ANALYSIS

The 2023 annual update to the Wildfire Mitigation Plan includes projects completed to mitigate the risk of wildfire, general statistics about GWP's service territory, and updates to the following sections:

Objectives

- Program objective details and considerations including trends associated with global warming and climate change.
- Implementation of infrared and LIDAR imaging for the inspection of power facilities and vegetation management.
- Additional power line clearance tree trimming measures to clear vegetation from the communication level to the top of the pole.
- Outline strategies to engineer, construct, and operate the electric transmission and distribution system in a manner to minimize the risk of catastrophic wildfire caused by electrical lines and equipment.
- Improving the resiliency of GWP's energy generation and delivery infrastructure.

Preventive Strategies and Programs

- Enhanced vegetation management practices.
- Expanded asset inspections.
- Fast-acting automatic protection schemes.
- Use of non-wood poles; Conduct advanced (radiographic) pole inspections.
- Increased wind loading calculation for poles in threat areas to increase integrity.
- Wider spacing on cross-arms; Modified construction standards in the Fire Treat Zone.
- Stronger, composite material cross arms. Cross-arms made of stronger, composite material.

Operational Practices

- GWP prioritizes its capital investments in system hardening, operations, and maintenance (O&M) of the equipment. Ongoing inspection programs are in place to identify the facilities that are due for replacement.
- The plan to increase generation reliability by implementing more distributed generation by installing photovoltaic panels and battery storage on city-owned properties.

STAKEHOLDERS/OUTREACH

Not applicable.

FISCAL IMPACT

The proposed Wildfire Mitigation Plan has a fiscal impact on GWP Capital Improvement Plan (CIP) budget for FY 2023-24. Funding is available in the Electric Depreciation Fund to cover an anticipated \$50,000 in expenditures for the system hardening in FY 2023-2024. In addition, operational funds are allocated for the inspection program and tree trimming to increase the reliability.

Funds for the proposed plan have been included in the proposed budget for FY 2023-24 in the following account and amount:

Requesting Appropriation		
Amount	Account String	Funding Source
\$ 50,000	GL: 53300-5830-GWP-0020 PL: GWP00653AA	Electric Depreciation Fund
\$2,800,000	GL: 43110-5820-GWP-4660 Tree Trimming Contract #C106241A	Electric Revenue Fund
\$1,000,000	GL: 43110-5830-GWP-0020 PL: GWP00643AA	Electric Depreciation Fund

ENVIRONMENTAL REVIEW

This item is considered a ministerial activity and is not a project for the purposes of California Environmental Quality Act (CEQA) and therefore, not subject to CEQA review.

CAMPAIGN DISCLOSURE

Not applicable.

ALTERNATIVES

Alternative 1: Adopt the herein presented updated Wildfire Mitigation Plan, hereinafter known, and referred to as GWP's Wildfire Mitigation Plan - Updated 2023.

Alternative 2: Not authorize the requested action herein which will place the City in violation of SB 901.

Alternative 3: Consider any other alternative not proposed by staff.

ADMINISTRATIVE ACTION

Prepared by:

Daniel Scorza, P.E., Chief Assistant General Manager - Electric

Approved by:

Roubik R. Golanian, P.E., City Manager

EXHIBITS / ATTACHMENTS

Exhibit 1: Wildfire Mitigation Plan – Updated June 2023

Exhibit 2: Guidehouse Consulting, Inc.'s Evaluation

City of Glendale
Glendale Water & Power

Wildfire Mitigation Plan



Updated June 2023

Table of Contents

1.	Document Information	1
2.	Change Management	2
3.	Utility Overview and Context	3
4.	Executive Summary	5
	Methodology for calculating high-wildfire danger areas in the City of Glendale.....	5
	Appropriate Mitigating Effort.....	6
5.	Definitions	8
6.	Overview	10
	Legislative and Regulatory Context.....	10
	Compliance	10
	Plan Structure.....	11
7.	Stakeholders	12
	City Council.....	12
	City Manager	12
	General Manager.....	12
	Chief Assistant General Manager/Assistant General Manager	12
	Electrical Services Administrator	13
	Electrical Superintendent.....	13
	Assistant General Manager – Power Management.....	13
	GWP Legislative Analyst	14
	Public Benefits Charge Marketing Manager.....	14
	Independent Third-Party Evaluator.....	14
	Wildfire Mitigation Committee	14
	Utility Governance Structure	16
8.	Objectives of Wildfire Mitigation Plan	17
	Primary Objective	17
	Secondary objectives	17
9.	Preventative Strategies and Programs.....	19
	Capital Projects	19
	Operations & Maintenance (O&M) Efforts.....	22
	Wildfire Mitigation Budget Measure.....	23
	Operational Practices as Preventive Measures	23

10.	Metrics	24
11.	Metrics Feedback.....	27
12.	Operational Practices	28
	Citywide.....	28
	GWP.....	28
	Energy Supply and Procurement Contingencies.....	30
13.	Customer Outreach	32
	Prevention and Strategy	32
	De-Energization (Public Safety Shutoff Event).....	32
14.	Vegetation Management	34
15.	System Inspections	35
16.	Wildfire Risks and Drivers	36
	Figure 1. California Wildfires Attributed to Electric Utilities (2012-2016).....	37
	Figure 2. GWP Equipment Failure (2012-2022)	38
17.	Wildfire Zones	39
	Figure 3. GWP Assets Currently Mitigated vs. Requiring Additional Mitigation	40
	Figure 4. GWP Assets Currently Mitigated vs. Requiring Additional Mitigation	41
18.	Enterprise-Wide Risks	42
	GWP – Water Division	42
	Glendale Information Services	42
	Glendale Police Department	43
	Glendale Fire Department.....	45
19.	Restoration	46
20.	Plan Maintenance and Inspection Effectiveness.....	47
	Exhibit A. City of Glendale Fire Threat Map.....	48
	Exhibit B. Vegetation Management Program (VMP).....	49
	Exhibit C. General Statistics from CalFire	51
21.	GWP Accomplishments during calendar year 2021	52
22.	GWP Accomplishments during calendar year 2022.....	53
23.	Third-Party Independent Assessment	54
	Exhibit D.....	54



Glendale Water & Power Wildfire Prevention and Mitigation Plan

1. Document Information

Effective Date June 06, 2023

Version Updated 2023

Supersedes Version June 07, 2022

Update Frequency Annually

Prepared by: C. Babakhanlou 05/18/23
Catherine Babakhanlou, PE *Date*
Senior Electrical Engineer – GWP

Reviewed by: D. Scorza 05/18/23
Daniel Scorza, PE *Date*
Chief Assistant General Manager – GWP

Approved by: M. Young 5/19/23
Mark Young *Date*
General Manager – GWP



Glendale Water & Power Wildfire Prevention and Mitigation Plan

2. Change Management

<i>Version</i>	<i>Description of Change</i>	<i>Date</i>
0	Initial version	01/15/2019
0.1	Includes Dan Scorza comments; language from Water, GPD, ISD; addition of Committee; add Draft watermark; add Executive Summary	02/20/2019
0.2	Incorporate feedback from March 27, 2019 review meeting, April 25, 2019 meeting with Jeremy Cawn, emailed feedback from Committee, Gordon Arnold updates for ISD	05/30/2019 07/03/2019 10/02/2019 10/18/2019
0.3	Incorporate feedback from Navigant, Atineh (public outreach)	11/05/2019
0.4	Updates for VMP, incorporate feedback from Navigant	11/20/2019
1.0	Updates to add Navigant report and minor changes per Navigant; accept all changes and finalize report	11/27/2019
Updated 2021	Updates to pages 4,16,17, 20,26, 30, 31 and 40	02/17/2021
Updated 2022	Added new sections with general information about GWP and basic statistics on pgs. 3 through 7. Updated pages. 9, 17, 20, 28	06/09/2022
Updated 2023	Comprehensive updates made to the document. Updates to table of contents & pages 3,4,5,6,7,16,17,18,20,21,22,23,24,25 26,30, 32,34,35,38,40,46,52,53	04/12/2023



Glendale Water & Power Wildfire Prevention and Mitigation Plan

3. Utility Overview and Context

Glendale Water & Power	[POU]	
GWP Service Territory Size	[30.58] square miles	
Owned Assets	<input checked="" type="checkbox"/> Transmission <input checked="" type="checkbox"/> Distribution <input checked="" type="checkbox"/> Generation	
Number of Customers Served	[89712] customer accounts	
Population Within Service Territory	[199357] people	
Customer Class Makeup	<i>Number of Accounts</i>	<i>Share of Total Load (MWh)</i>
	[85.19] % Residential; [0.02] % Government; [0] % Agricultural; [14.57] % Small/Medium Business; [0.22] % Commercial/Industrial	[37.95] % Residential; [0.93] % Government; [0] % Agricultural; [31.30] % Small/Medium Business; [29.82] % Commercial/Industrial
GWP Service Territory Location/Topography¹	[0] % Agriculture [1.49] % Barren/Other [0] % Conifer Forest [0] % Conifer Woodland [0.03] % Desert [0.14] % Hardwood Forest [2.98] % Hardwood Woodland [0.86] % Herbaceous [35.95] % Shrub [58.29] % Urban [0.26] % Water	
GWP Service Territory Wildland Urban Interface	[40.81] % Wildland Urban Interface; ² [7.76] % Wildland Urban Intermix;	
Percent of Service Territory in CPUC High Fire	Tier 2: [48.09] % Tier 3: [13.60] %	

¹ This data is based on the California Department of Forestry and Fire Protection, California Multi-Source Vegetation Layer Map, depicting WHR13 Types (Wildlife Habitat Relationship classes grouped into 13 major land cover types) available at: <https://www.arcgis.com/home/item.html?id=b7ec5d68d8114b1fb2bfbf4665989eb3>.

² This data is based on the definitions and maps maintained by the United States Department of Agriculture, https://www.fs.usda.gov/Internet/FSE_DOCUMENTS/fsbdev3_053107.pdf and https://www.fs.fed.us/nrs/pubs/rmap/rmap_nrs8.pdf



Glendale Water & Power Wildfire Prevention and Mitigation Plan

Threat Districts (based on total area)		
Prevailing Wind Directions & Speeds by Season	Please refer the link below to California, Burbank Airport https://wrcc.dri.edu/Climate/comp_table_show.php?styp=wind_dir_avg Wind is Southerly, except in January, when fire danger is low, it is ESE	
Miles of Owned/Controlled Lines* Underground and/or Overhead	<i>In Service Territory</i>	<i>Outside Service Territory</i>
	Overhead Dist.: [247.31] miles Overhead Trans. [28.13] miles Underground : [283.8] miles	Overhead Dist.: [0] miles Overhead Trans.: [0] miles Underground: [0] miles
Percent of Owned/Controlled Lines* in CPUC High Fire Threat Districts	<i>Overhead Distribution Lines as % of Total Distribution System (Inside and Outside Service Territory)</i>	
	Tier 2: [21.73] %, 53.75 miles Tier 3: [5.54]%, 13.71 miles	
	<i>Overhead Transmission Lines as % of Total Transmission System (Inside and Outside Service Territory)</i>	
	Tier 2: [19.54] %, 5.57 miles Tier 3: [5.72] %, 1.63 miles	
Number of Owned Poles**	<i>In Service Territory</i>	<i>Outside Service Territory</i>
	Wooden: [14,660] Steel: [146] Composite: [0] Total 14,806	Wooden: [0] Steel: [0] Composite: [0]
Have GWP customers ever lost service due to an IOU PSPS event?	<input type="checkbox"/> Yes <input checked="" type="checkbox"/> No	
Have GWP Customers ever been notified of a potential loss of service to due to a forecasted IOU PSPS event?	<input type="checkbox"/> Yes <input checked="" type="checkbox"/> No	
Has GWP developed protocols to pre-emptively shut off electricity in response to elevated wildfire risks?	<input checked="" type="checkbox"/> Yes <input type="checkbox"/> No There is a protocol to pre-emptively shut off the power to Bel Aire – Montrose Transmission line during elevated fire danger weather, but it does not result in loss of power of any customers. The elevated fire danger is based on the Red Flag Warning by the National Weather Service (NWS). Below is the data related to pre-emptive shut-offs for calendar year 2021: <i>Number of shut-off events:</i> [7] on 1/14, 1/21, 10/13, 10/14, 11/22, 11/24 <i>Customer Accounts that lost service for >10 minutes:</i> [0] Zero <i>For prior response, average duration before service restored:</i> [0] Zero Note: No customers lost power during pre-emptive shutoffs, the transmission line that was shut off does not have any direct customer feed, it provided system redundancy and rigidity.	



Glendale Water & Power Wildfire Prevention and Mitigation Plan

4. Executive Summary

The City of Glendale and the Glendale Water and Power (GWP) Department recognize that the potential loss of property and human life posed by wildfires is a growing concern. On September 21, 2018, the state of California passed Senate Bill 901 (SB 901) to provide guidance to electrical utilities in mitigating the risk of wildfires ignited by the utilities' electrical assets, and to mandate electric utilities develop a plan to mitigate against wildfires. This plan establishes methods and procedures aligned with GO – 95, that are used to construct, maintain, and operate GWP's electrical lines and equipment to minimize the risk of wildfire posed by its infrastructure. This plan in accordance with California Public Utilities Code (CPUC) Section 8387 subpart (b) will require each local publicly owned electric utility and electrical corporation to prepare and present a wildfire mitigation plan (WMP) to its governing board addressing the elements listed in subpart (b) (2). This plan will also cover measures of effectiveness to inform future improvements to specific programs and strategies.

GWP's Wildfire Mitigation Plan (Plan) details its two-pronged approach to mitigate wildfires, in which a "wildfire" requires two elements: ignition and spread.

WILDFIRE = IGNITION x SPREAD

If only one of these two elements is present, a wildfire does not result. Both ignition (a spark or other source of the initial fire) and spread (the fire is free-burning) must be present in order for a wildfire to occur.

GWP's wildfire mitigation efforts focus on 1) limiting the likelihood of ignition of localized fires from its assets and equipment, and 2) limiting the spread of localized fires into a wildfire. It is impossible to eliminate wildfires, but by reducing the likelihood of igniting fires and by containing any fires that do start, GWP's approach can significantly mitigate the risk of igniting and spreading wildfires while complying with SB 901 and other, related mandates.

To minimize the likelihood of ignition, GWP has adopted a risk-based methodology to prioritize mitigation of electrical assets that could ignite a wildfire in high-wildfire danger service areas of the City of Glendale.

Methodology for calculating high-wildfire danger areas in the City of Glendale

Identify the areas of the City of Glendale that are at highest risk of igniting and spreading wildfires.

- GWP has elected to use Cal Fire's Fire Threat maps, which show that approximately 62% of the City's total area is at an elevated risk of wildfires. The Glendale Fire Department has conducted its own wildfire risk assessment that validates the Cal Fire Threat maps.



Glendale Water & Power Wildfire Prevention and Mitigation Plan

- Of the areas identified on these Fire Threat maps that are at an elevated risk of wildfires (namely, Tier 2 and Tier 3 zones), eliminate all areas where GWP has no electrical assets that could potentially ignite a wildfire. Where there are no GWP electrical assets, no GWP-initiated ignition is possible and no further wildfire mitigation is prioritized at this time.
- Of the areas that remain, eliminate the areas where electrical assets reside within 100 feet of a private structure. The City of Glendale's Fire Department's robust Vegetation Management Program (VMP) requires homeowners to clear or manage hazardous vegetation within 100 feet of structures, reducing the intensity and rate of spread of wildfires. Where the VMP limits the rate and intensity of spread, no further wildfire mitigation is currently proposed.
- **By applying this methodology, GWP has developed a distilled map** of the locations of GWP electrical assets requiring further mitigation. The land area under these electrical assets comprises approximately 0.47% of the City's total area. In terms of circuit miles, there are 9.55 miles of high voltage overhead conductors in Tier 2 area and 3.37 miles of conductors in Tier 3 area. The total liable overhead circuit length is 12.92 miles. Compared to the total GWP high voltage circuit miles, the liable miles comprise 4.6 %.

Appropriate Mitigating Effort

Determine the appropriate mitigating effort(s) at each of these remaining assets to reduce the risk of igniting or spreading wildfires, which may include one or more of the following potential solutions:

- Enhanced vegetation management practices.
- Expanded asset inspections
- Fast-acting automatic protection schemes.
- Use of non-wood poles; Conduct advanced (radiographic) pole inspections.
- Increased wind loading calculation for poles in threat areas to increase integrity.
- Wider spacing on cross-arms; Modified construction standards in the Fire Treat Zone.
- Stronger, composite material cross arms. Cross-arms made of stronger, composite material.
- The use of vibration dampers to reduce conductor abrasion and fatigue from vibration caused by wind. Vibration dampers are usually attached to the conductor near insulators.
- Application of fire-resistant wraps to prevent wood poles.
- Applying new mitigation technologies to reduce the potential for the wildfire ignitions. Such as, fire monitoring cameras to be installed, SCADA enabled reclosers, advanced sensors/protection system.
- Replacing mineral oil filled transformers with less flammable new ester fluid transformers.
- Increased use for covered conductor to reduce contact from objects and wire-to-wire ignitions.



Glendale Water & Power Wildfire Prevention and Mitigation Plan

- Conductor-spacing devices to minimize the likelihood of wire slapping.
- Insulated “tree wire”.
- 24/7 monitoring of weather station data and HD cameras.
- Move overhead conductors and assets underground. Moving forward with our program to install 1107 feet of underground distribution lines in High Fire Threat Districts (Tier 2 & Tier 3)—and hardening additional miles with covered conductor or line removal using a risk-ranked approach to prioritize work
- Modify recloser settings during high-risk periods to minimize the likelihood of inadvertently reclosing in a high-wildfire risk area. Block reclosing and increase relay sensitivity on all feeder lines in the Tier 2 and Tier 3 HFTD (High fire threat district) during RFW (Red flag warnings) events.
- Proactive de-energization during high-wildfire risk periods.
- Animal intrusion covers
- Replacing expulsion fuses with Fuse Saver, use concealed Lighting Arrestors.
- Visual inspection and infrared thermography of distribution substations.
- Utilization of Public Safety Power Shutoff (PSPS) protocols as a safety of last resort that results in more targeted and smaller PSPS events.

The specific mitigating measure will depend upon the specific situation. GWP staff will evaluate each GWP asset (or logical group of assets) requiring further mitigation and evaluate all solutions based upon criteria like up-front and life-cycle costs, effectiveness in reducing risk, longevity, impact to reliability and serviceability, and alignment with long-term utility and City goals and priorities.

GWP metrics will evaluate the effectiveness of this Plan and of its wildfire mitigation, making adjustments to priorities and funding as appropriate to ensure continued successful mitigation.



Glendale Water & Power Wildfire Prevention and Mitigation Plan

5. Definitions

Catastrophic Fire	See also Wildfire. A wildland or wildland urban interface fire with a fast moving front, extending over a large area (300+ acres) and/or highly destructive to lives, property or natural resources. ³
Hazardous Vegetation	Refuse, grass, weeds, shrubs, trees, or other vegetation which are in such condition and location, or by the unique characteristics of a species, as to provide a ready fuel supply to augment the spread or intensity of a fire. ⁴
POU	Publicly-Owned Utilities are subject to local public control and regulation. POU's are organized in various forms including municipal districts, city departments, irrigation districts, or rural cooperatives. Municipal districts may include territories outside city limits or may not even serve the entire city. Cooperatives are owned by the customers they serve usually in rural areas. There are more than 40 POU's in the state that account for approximately a quarter of electricity supply in California. Most POU's are smaller than IOU's in the electricity sales and the number of customer accounts. ⁵
Red Flag Warning	The National Weather Service issues Red Flag Warnings to alert fire departments of the onset, or possible onset, of critical weather and dry conditions that could lead to rapid or dramatic increases in wildfire activity. ⁶
Wildfire	See also Catastrophic Fire. Any <i>free-burning</i> vegetative fire that initiates from an unplanned <i>ignition</i> , whether natural or human-caused, where the management objective is full suppression. ⁷ GWP considers both ignition and spread as required elements of a Wildfire.
VMP	The City of Glendale's Vegetation Management Program was developed to ensure there is adequate defensible space in the wildland-urban interface areas between the open space and homes in its hillside and canyon communities. Activities include annual inspections and review/permitting of landscape and fuel modification plans for properties in the High Fire Hazard Area. ⁸
Wildland	Uncultivated land, other than fallow, neglected or maintained for such purposes as wood or range-forage production, wildlife, recreation, protective watershed cover, or wilderness.



Glendale Water & Power Wildfire Prevention and Mitigation Plan

Uncontrolled Fire	The term “uncontrolled fire,” as used in this division, means any fire which threatens to destroy life, property, or resources and either: (1) is unattended by any person; (2) is attended by persons unable to prevent its unrestricted spread; or (3) is burning with such velocity or intensity that it could not be readily controlled with those ordinary tools available to private persons at the fire scene.
-------------------	-----------------------------------------------------------------------------------------------------------------------------------------------------------------------------------------------------------------------------------------------------------------------------------------------------------------------------------------------------------------------------------------------------------------------

³ California Office of Emergency Services. <https://www.caloes.ca.gov/FireRescueSite/Documents/20040405-BRC-Final%20Report%20-%20Part%205%20of%205.pdf>

⁴ Glendale Building and Safety Code (Sec. 4906.1.2). <https://www.glendaleca.gov/home/showdocument?id=35639>

⁵ California Energy Commission. https://ww2.energy.ca.gov/pou_reporting/background/difference_pou_iou.html

⁶ California Department of Forestry and Fire Protection. <https://www.fire.ca.gov/programs/communications/red-flag-warnings-fire-weather-watches/>

⁷ California State Hazard Mitigation Plan. https://www.caloes.ca.gov/HazardMitigationSite/Documents/011-2018%20SHMP_FINAL_Ch%208.pdf

⁸ City of Glendale Fire Department. <https://www.glendaleca.gov/government/departments/fire-department/fire-prevention-environmental-management/vegetation-management-and-weed-abatement>



Glendale Water & Power Wildfire Prevention and Mitigation Plan

6. Overview

The City of Glendale's Water & Power department (GWP) has developed this wildfire mitigation plan (Plan) to protect City customers, employees, wildlife and assets against the potential dangers and costs of damage incurred as a result of wildfires inadvertently ignited by GWP electrical assets or equipment. Also, to protect the above-mentioned entities from a wildfire started by a source other than GWP electrical equipment, for example, a campfire. As requirements change and condition reassessments are performed, this Plan will be updated to fully comply with updated needs.

Legislative and Regulatory Context

Senate Bill (SB) 1028, which passed into law in 2016, SB 901, which passed into law in 2018, and Assembly Bill (AB) 1054, which passed into law in 2019, intend to strengthen wildfire mitigation through oversight of public utilities under the jurisdiction of the California Public Utilities Commission (CPUC). Although the City of Glendale does not fall under the authority of the CPUC, it is likely that the requirements proposed by these Senate bills will eventually apply to the City.

- Per SB 901, all Publicly-Owned Utilities (POUs) are required to adopt a Wildfire Mitigation Plan (WMP), which shall be reviewed by an independent third-party evaluator.
- Per Assembly Bill (AB) 2911, GWP may access property as necessary, regardless of land ownership or express permission, to prune trees to maintain clearances pursuant to Section 4293 of CA Public Resources Code.
- Per AB 1054, POUs must annually submit a WMP to the California Wildfire Safety Advisory Board, which will review the Plan and provide recommendations on mitigating wildfire risk.

This document outlines the City's approach to comply with state law, as well as Public Utilities Code (PUC) section 8387 for POUs to have a wildfire mitigation in place and update the plan annually.

In addition, the CPUC has published several General Orders (GOs) for overhead line design, construction, maintenance, and inspections, the application of which is intended to ensure adequate electrical service and to secure safety to persons engaged in the construction, maintenance, operation, or use of overhead lines and to the public in general. GWP shall meet or exceed the recommendations and requirements within these GOs, including GO 95 and GO 165.

Compliance

The GWP General Manager or his delegate shall support and administer this Plan to include monitoring and auditing the implementation of the Plan. The Plan shall be updated, reviewed, and approved by the General Manager of GWP on an annual basis, or as required by law. This periodic review shall ensure that the Plan is updated to comply with all state regulations and City regulations and requirements. The General Manager may elect to summarize and review the Plan with the City Manager and/or present updates to the GWP Commission and/or City Council to obtain required approvals.



Glendale Water & Power Wildfire Prevention and Mitigation Plan

Plan Structure

As prescribed by the Plan, GWP staff shall construct, maintain, and operate its electrical system assets to minimize the likelihood of catastrophic wildfires posed by the electrical system and equipment. The Plan is comprised of the following elements:

- **Stakeholders.** City personnel and contractors who are responsible for maintaining, updating, approving, and executing this Plan.
- **Objectives.** Frame the Plan's objectives and the risk-based approach. See Section J for additional details on the approach.
- **Preventative Strategies and Programs.** To accomplish these Objectives, GWP shall pursue the following preventative strategies and programs.
 - **Capital Projects.** GWP staff shall tailor its resource plans to upgrade, enhance, and reinforce its electrical infrastructure.
 - **Operations & Maintenance (O&M) Efforts.** Staff shall also initiate contracts to address on-going, non-capital priorities, including vegetation management, system inspections, and maintenance and support of this Plan.
 - **Wildfire Mitigation Budget Measures.** Staff shall also allocate and initiate the approval of the budget for Capital projects and Maintenance work.
 - **Operational Practices.** GWP shall continue to de-energize transmission lines and distribution feeders, disable reclosers, and take any other operational steps necessary to ensure public safety during high-risk scenarios.
- **Metrics.** To ensure the protocols and steps taken in this Plan are effective, GWP shall establish metrics that measure and quantify the elements of this Plan.
- **Metrics Feedback.** GWP shall evaluate the Plan's performance and adjust this Plan to ensure these goals are achieved.
- **Operational Practices.** Operational practices shall aim to mitigate the risk of causing catastrophic wildfires.
- **Customer Outreach.** GWP shall develop a process that ensures customers are informed and aware of the potential for emergency power cutoffs.
- **Vegetation Management.** Tree trimming and related mitigating actions are intended to prevent inadvertent vegetation contacts to conductors and to minimize the spread of fires.
- **System Inspections.** Periodic and on-going inspections of GWP equipment and infrastructure helps identify failing equipment that can lead to fire ignition.
- **Wildfire Risks and Drivers.** Describe wildfire risks to the electric utility and drivers of those risks.
- **Wildfire Zones.** GWP has leveraged the tiered zones developed and mapped by the California Department of Forestry and Fire Protection (Cal Fire) to identify electric utility dangers that have historically caused the most wildfire damage, as measured in acres.
- **Enterprise-Wide Risks.** Wildfires pose a risk not only to the energy delivery function of the electric utility, but also to the energy supply function, the water utility, and to various City functions, including Police, Fire, and Public Works.
- **Restoration.** Continuing its current practice, in the event of customer outages, GWP shall restore customers as safely and as quickly as possible.



Glendale Water & Power Wildfire Prevention and Mitigation Plan

7. Stakeholders

This Plan is subject to direct oversight by the City of Glendale City Council, it is prioritized at the direction of the General Manager, and it is maintained, updated, and implemented by GWP personnel.

City Council

As the governing board overseeing GWP's operation, Glendale's elected, 5-member City Council approves funding and directs the City Manager, or her designee, to implement the key elements of this Plan. SB 901 requires the governing board (i.e., the Glendale City Council) to determine whether any portion of the geographical area where the utility's overhead electrical lines and equipment are located has a significant risk of catastrophic wildfire resulting from those electrical lines and equipment. If so, GWP must, at an interval determined by City Council, present to City Council for approval those wildfire mitigation measures the utility intends to undertake to minimize the risk of its overhead electrical lines and equipment causing a catastrophic wildfire.

City Manager

The City Manager serves as the chief executive overseeing City-wide operations, including GWP, Fire, Police, Public Works, Parks, Libraries, and other departments. The City Manager delegates oversight and tactical implementation of this Plan to the General Manager of GWP, and maintains responsibility for promoting City-wide resources to implement and support this Plan as approved by City Council.

General Manager

The GWP General Manager maintains responsibility for, and provides management commitment to, the execution of this Plan, including coordination with other department heads, with tactical and day-to-day implementation responsibilities delegated to the roles below. The General Manager shall support the Plan's implementation as developed by GWP management and staff.

Chief Assistant General Manager/Assistant General Manager

The GWP Electric division shall:

- Facilitate coordination between the General Manager and other GWP Electric functions.
- Coordinate activities between Electric Engineering and Electric Construction and Operations sections.
- Coordinate directly with the Glendale Fire Department and other City Departments, as necessary, during emergency situations, including during activation of the City's Emergency Operations Center (EOC) and in implementation of the Citywide Emergency Response Plans.
- Justify and request sufficient funding to support this Plan.
- Commit management support for the Plan.



Glendale Water & Power Wildfire Prevention and Mitigation Plan

Electrical Services Administrator

The GWP Electric Engineering section shall:

- Hold primary responsibility for maintenance of this Plan, which includes the periodic review and substantive updates. Make appropriate updates to this Plan as Cal Fire modifies the zone boundaries or makes other fundamental changes that impact this Plan.
- Coordinate with Electric Construction and Operations to provide input to the capital and O&M budgeting process in support of this Plan, including capital funds to fortify infrastructure and O&M funds for inspections and vegetation management.
- Track GWP assets within the physical boundaries of the Cal Fire zones and their respective mitigation solution(s), as applicable.
- Design and engineer enhancements to GWP equipment and infrastructure with the intent of preventing and mitigating the start and spread of wildfires by GWP assets.
- Coordinate with Dispatch to develop and document specific operational practices to be implemented during pre-determined “high wildfire danger” periods.
- Develop switching procedures and other mitigating steps on an operational basis with the aim of keeping customers energized.
- Delegate implementation of these responsibilities as appropriate.

Electrical Superintendent

The GWP Electric Construction and Operations section shall:

- Coordinate vegetation management activities in accordance with this Plan and California regulatory requirements, including oversight of contractors and the vegetation management budget.
- Coordinate with Electric Engineering to provide input to the capital and O&M budgeting process in support of this Plan, including capital funds to fortify infrastructure and O&M funds for inspections and vegetation management.
- Implement the infrastructure upgrades and enhancements as engineered by Electric Engineering in support of this Plan.
- Delegate implementation of these responsibilities as appropriate.

Assistant General Manager – Power Management

The GWP Power Marketing and Dispatch sections shall:

- Coordinate and procure replacement energy in response to planned and unplanned outages of the critical transmission corridors that provide up to approximately 200 MW of incoming energy to the City of Glendale to meet load.
- Declare and initiate rolling blackouts to customers as a preemptive action to minimize the likelihood of sparking wildfires, or as a response to the loss of energy supply that results in an imbalance between energy supply and load.
- Coordinate with Electric Engineering to develop and document specific operational practices to be implemented during pre-determined “high wildfire danger” periods.
- Delegate implementation of these responsibilities as appropriate.



Glendale Water & Power Wildfire Prevention and Mitigation Plan

GWP Legislative Analyst

The function of the GWP Legislative Analyst can be filled at any level and shall:

- Monitor legislative developments and requirements at the local, state, and federal level.
- Communicate these requirements to GWP Stakeholders and the Wildfire Mitigation Committee.
- Facilitate coordination among City department representatives in the support and implementation of this Plan.

Public Benefits Charge Marketing Manager

The Marketing, Communications, and Outreach office of GWP shall:

- Execute education and outreach on wildfire prevention and strategy.
- Execute communication and collaboration with customers.
- Coordinate all outgoing alerts and messages to residential and business customers.
- Develop and broadcast messages as necessary via social media, the City's website, and the Reverse 911 calling system.
- Conduct media outreach.
- Coordinate messaging with GWP employees.
- Coordinate with GWP's Customer Service Call Center.
- Coordinate with the City's Public Information Office (PIO), Glendale Police Department PIO, and Glendale Fire Department PIO.
- Maintain a website devoted to wildfire and tree safety and public safety shut offs.
- Develop, distribute, and maintain all collateral items related to wildfire and tree safety and public safety shut offs.

Independent Third-Party Evaluator

As mandated by SB 901, this Plan shall be reviewed by an approved, independent, third-party evaluator to review and assess the comprehensiveness of, and GWP's compliance with, this Plan. The evaluator will also conduct a safety culture assessment of GWP. GWP shall engage the independent contractor annually, or as required by law, once the list of approved, qualified evaluators is released by the Office of Planning and Research's *Commission on Catastrophic Wildfire Cost and Recovery*.

The specific requirements for the independent third-party evaluator are mandated by SB-901.

Wildfire Mitigation Committee

To maximize the effectiveness of this Plan, representatives from multiple, key City departments meet quarterly, or as deemed necessary by the Committee, to review the performance of this Plan, discuss new and existing legislative requirements related to wildfire mitigation, validate the risk-based approach, and review and update this Plan in response to the Plan's performance and regulatory updates.



Glendale Water & Power Wildfire Prevention and Mitigation Plan

Attendees at these meetings may vary; representatives, or their delegates, from the following areas comprise the core of the cross-functional Committee:

- GWP Electric Engineering
- GWP Legislative Analyst
- GWP Electric Operations & Construction
- GWP System Dispatch
- GWP Mapping & Records
- GWP Marketing & Communications
- GWP Water
- City of Glendale Fire Department
- City of Glendale Legal Department
- City of Glendale Public Works Maintenance Services (Forestry)

GWP staff acknowledge staffing deficiencies where additional, permanent (or long-term contracted⁹) staff is necessary to implement and maintain the elements of this Plan.

The staffing deficiencies reflect permanent increases in workload, including:

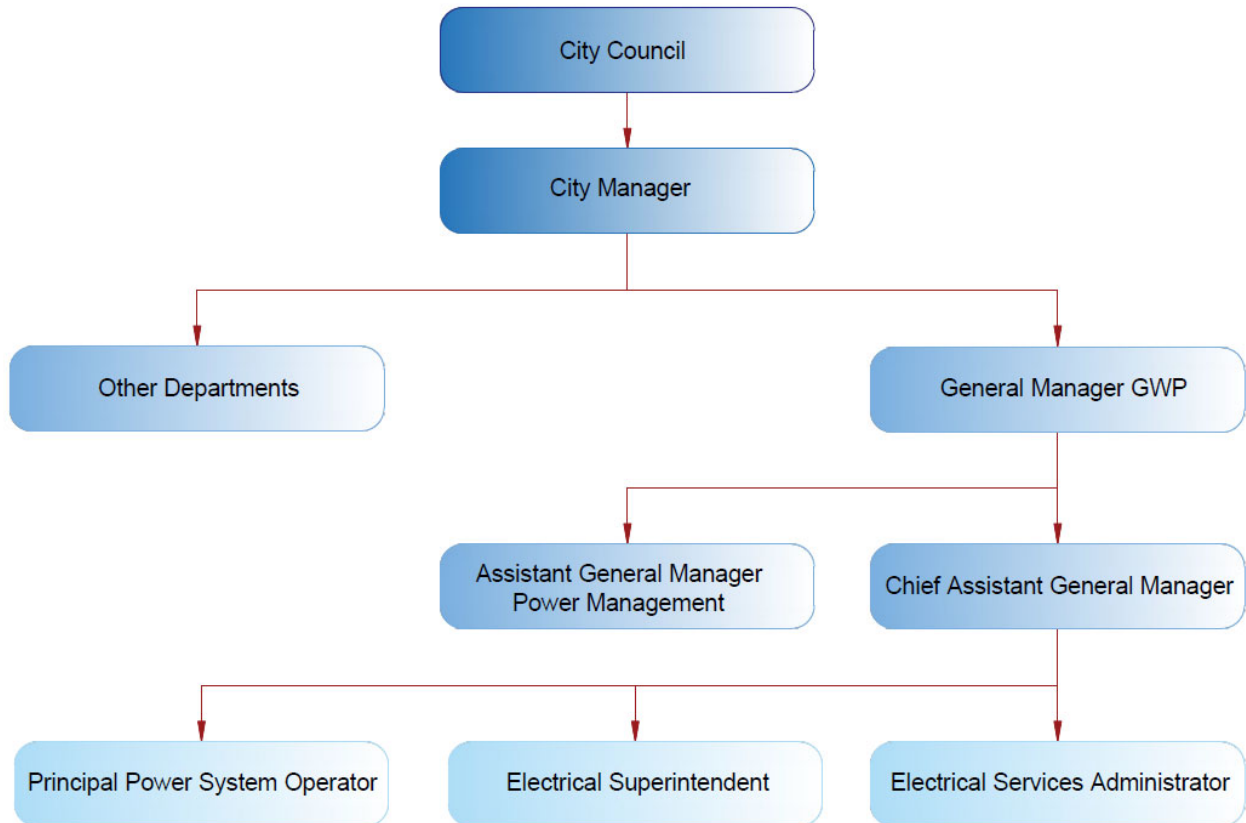
- Increased oversight of crews responsible for clearing trees and hazardous vegetation. There are currently two FTEs allocated to monitoring, overseeing, and directing contracted tree-trimming crews. Additional staff time is required to accommodate the increased level of tree-trimming activities and the added responsibility of clearing hazardous vegetation throughout Tier 2 and Tier 3 zones.
- Additional engineering resources to investigate, detail, engineer, and design the replacement of equipment consistent with this Plan. Replacement of overhead conductors, splices, transformers, capacitor banks, and other equipment will require engineering expertise above and beyond the current workload, as the existing assets would remain in use until replaced during life-cycle replacement.
- Additional field and real-time personnel will be needed to implement, maintain, and use the new equipment, products, and solutions that are implemented as mitigating measures. These crews are already fully subscribed and lack the capacity for permanent increases in work throughput.
- Maintaining, troubleshooting, and monitoring real-time weather or fire-detection [equipment](#) and data and systems.

⁹ Contracted resources may be utilized to supplement GWP efforts – for example, to identify hazardous vegetation clearing needs.



Glendale Water & Power Wildfire Prevention and Mitigation Plan

Utility Governance Structure





Glendale Water & Power Wildfire Prevention and Mitigation Plan

8. Objectives of Wildfire Mitigation Plan

Primary Objective

The primary objective of this plan is to reduce and eliminate the probability of GWP's Electric infrastructure as a contributing factor for the ignition of wildfire(s). Since the adoption of SB 901 (Dodd) in 2018, GWP has been continuously evaluating and updating its WMP to effectively address the provisions set by the plan and to be consistent with state, and local laws and regulations. GWP understands the threat wildfires impose to the electric grid and is effectively Working on making cost-effective inspection and maintenance programs to improve the resiliency of the grid. The provisions set forth below detail the preventative strategies GWP is perusing to limit potential fire ignition during elevated weather conditions.

The goal of this Plan is to establish a framework to:

Engineer, construct, maintain, and operate the GWP electric transmission and distribution system in a manner intended to minimize the risk of catastrophic wildfire caused by electrical lines and equipment.

Secondary objectives

- Improving the resiliency of GWP's energy delivery infrastructure. GWP aims to continually assess new industry practices and technologies designed to reduce the likelihood of a disruption in service and improve the restoration of service. Due to global warming and gradual climate change, there is a prognostication of an increase in wind speeds. High wind and gust speeds can inflict significant damage to GWP's overhead power infrastructure. To mitigate this rise in wind speed, GWP is conducting more stringent pole inspections, including invasive testing. Also, GWP contracted with a company that utilizes drones for the inspection of power facilities and vegetation management, using infrared and LIDAR imaging. Higher winds imply that a wider zone of vegetation clearing is required to diminish the possibility of trees, tree limbs and other vegetation debris contacting overhead equipment. GWP is taking extra measures and trims the vegetation from the communication level to the top of the pole.
- Climate related increase in temperature results in higher peak power consumption. This elevated peak loading of infrastructure can lead to overloaded lines and transformers, which in turn may become a source of fire. GWP is replacing transformers that are close to their 90% loading limits.
- Improving the resiliency of GWP's energy generation and delivery infrastructure in case of a wildfire that has not been ignited by GWP assets. Wildfires can be started by various sources, not just electrical equipment. For example, improperly controlled camp fires, lightning, overheated construction machinery coming into contact with dry brush, etc. To assess the treat of wildfire to GWP Transmission and Distribution network, various scenarios are reviewed by GWP Wildfire Mitigation Committee considering different geographic points of origin of ignition and the direction of the prevailing winds.



Glendale Water & Power Wildfire Prevention and Mitigation Plan

- Implementing Enhanced Powerline Safety Settings (EPSS) to reduce ignitions by adjusting the sensitivity of our equipment to automatically turn off power faster if the system detects a problem. Public Safety Power Shutoffs (PSPS) and EPSS have significant safety and wildfire risk benefits. It is intended to reduce the PSPS and EPSS customer impacts through the implementation of updated, data driven PSPS protocols as well as optimizing EPSS settings to reduce outage potential and having resources available to reduce the time and impact of outages.
- In addition, to mitigate against PSPS impacts, GWP will be continuing to install sectionalization devices/reclosers as well as performing system hardening work and operating temporary distribution.
- Additionally, GWP Wildfire Mitigation Plan is intended to improve the situational awareness by refining our models, such as weather models, continuing to install weather cameras and high-definition cameras that provide data that we can both use and share with first responders and local governments.

To reduce the risk of spread of wildfire, the Glendale Fire Department will be using multiple cameras and weather stations at strategic locations to monitor conditions and take immediate action. Cameras are found at:

Mt. Lukens 1&2

<https://alertca.live/cam-console/2181>

Verdugo Peak 1&2

<https://alertca.live/cam-console/2477>

Mt. Lee North

<https://alertca.live/cam-console/2176>

Weather Stations area located at:

<https://www.weather.gov/lox/fwmV3>

- Measuring the effectiveness of the mitigating measures described in the Plan. Where a particular action, program, or protocol is determined to be unnecessary or ineffective, GWP will aim to assess whether a modification or replacement is merited. This Plan will also help determine whether more cost-effective measures could produce the same, or better, results.
- Complying with all local, state, and federal regulations related to wildfire mitigation.



Glendale Water & Power Wildfire Prevention and Mitigation Plan

9. Preventative Strategies and Programs

GWP recognizes and acknowledges the impact of dynamic climate change in California. Direct impacts include altered weather patterns, extended summers, and dryer seasons that increase the risk of uncontrolled wildfires, especially during windy periods (e.g., Santa Ana winds).

California wildfires have been getting more intense, more destructive, and more deadly in recent years, where 2018 was the deadliest and most destructive wildfire season in California on record. 14 of the 20 largest wildfires since 1932 have occurred in the last 20 years: the size, number, and devastating impacts of wildfires are expected to continue to increase. In developing and implementing this Plan in light of these facts, GWP intends to use proven technology, work practices, and programs to enhance the performance and safety of its equipment and infrastructure to minimize the risk of causing or spreading wildfires. To accomplish this, GWP shall prioritize its:

- **Capital investments** in system hardening.
- **Operations and maintenance (O&M)** expenditures on vegetation management, system inspections, and equipment maintenance.
- **Wildfire Mitigation Budget Measure** and allocation of funds to initiate the mitigation efforts.
- **Operational practices** on disabling reclosers, proactive de-energization, and public outreach, as well as leveraging City programs that are consistent with this Plan (e.g., VMP).

Capital Projects

GWP's capital funding includes plans to upgrade, enhance, and reinforce its electrical infrastructure to minimize the risk of its electrical system causing or spreading catastrophic wildfires. Mitigation efforts will be grouped into manageable, logical, geographically co-located collections of assets to be mitigated as a project for ease of management. Specific mitigating activities associated with wildfire mitigation will be evaluated based upon the following criteria (additional criteria may be added, as appropriate):

- **Existing Mitigation.** The City of Glendale, including GWP and the Glendale Fire Department, has already implemented wildfire mitigation steps throughout many parts of the City. For a given set of assets, if existing mitigation measures already provide a sufficient level of protection against ignition or spread, then other assets without existing mitigation would be addressed first.
- **Time Commitment.** Some mitigation projects can be completed quickly, while other projects require a significant investment of time, perhaps due to licensing or permitting issues.
- **Cost.** Total investment (and on-going operating and maintenance costs) to mitigate each project will be considered, as different solutions can have different costs for a relatively equivalent outcome. For example, moving assets underground often has the highest cost, so if a lower-cost alternative can provide an equivalent level of mitigation, then selecting a higher-cost solution must provide significant advantages in some other criterion.



Glendale Water & Power Wildfire Prevention and Mitigation Plan

Engineering Studies will refine the mitigation plan. The most appropriate engineering solution will be determined by conducting studies that incorporate all the above elements (existing mitigation, timeframe, and cost to implement and maintain) to the specific engineering challenges and issues that must be overcome. Depending upon the outcome of these detailed engineering studies to determine corrective actions, mitigating activities may include:

- Installation of insulated overhead **conductors** (i.e., “tree wire”) in those areas where conductor contacts are likely to initiate a wildfire; as of May 2023, tree wires are purchased, and plans are being developed to convert a small stretch of overhead conductors that have been identified as requiring this mitigation. Increasing the **spacing** between conductors, as clearance requirements and easements allow, can also reduce the likelihood of palm fronds creating shorts across conductors, which could spark a wildfire.
- Leveraging **conductor-spacing devices** to minimize the likelihood of “wire slapping.”
- Where appropriate, converting existing overhead transmission and distribution assets to **underground** assets (e.g., conductors and transformers). Most new installations are underground, unless doing so would be cost-prohibitive or is otherwise infeasible. Undergrounding will also allow for the spreading of costs over a longer period of time and will allow us to significantly reduce ongoing programs and the associated costs, such as vegetation management, in areas that have been undergrounded removing the need to inspect, trim and cut trees.
- Replacing wood poles, which can topple and ignite new fires in high-wind conditions, with **sturdier poles**, reducing the likelihood of downed poles igniting wildfires and speeding customer restoration. This may include the use of steel poles, where applicable.
- Using stronger, **composite materials for crossarms**, e.g., fiberglass.
- Replacement of **insulators** to reduce the likelihood of overhead conductors becoming detached and contacting vegetation or other flammable materials.
- Identification, and replacement, of **splices, clamps, and connectors** on overhead conductors, where stress from heat or general use can cause downed conductors to come in contact with vegetation or other flammable materials.
- Continue current practice of replacing overhead distribution **transformers** that are over 40 years old. Studies have confirmed that transformers over 40 years old have a higher likelihood of failure, which could result in sparking or explosions that could initiate a wildfire.
- Replacing overloaded transformers that do not meet loading criteria to prevent transformer failure
- Improving **transformer resiliency** to reduce the likelihood of transformer failures (which can trigger transformer fires) and to protect transformers against the heat of a wildfire (which can also trigger transformer fires). This may include investigating more robust materials and supplies (e.g., FR3 transformer oil).
- GWP’s engineering redesigned the capacitor bank installation standards. Capacitor bank neutral that is grounded at the base of the pole can facilitate high fault currents (and the



Glendale Water & Power Wildfire Prevention and Mitigation Plan

potential for fire). According to the new standard capacitor bank neutral is no longer grounded.

- Installing fault indicators for detecting faults on electric lines or equipment. Remote fault indicators can provide line current measurement at device
- Implementing fast-acting, **automatic protection schemes** to detect broken conductors and de-energize before the conductor touches the ground.
- Installing remotely operable SCADA sectionalizing/reclosing devices and manually operated sectionalizing/reclosing devices on the distribution system can support GWP's ability to segment the distribution circuits close to designated meteorology shutoff polygons to reduce the customer impact and scope of PSPS events which are used as a last resort to avoid ignition risks
- Replacing non-exempt equipment with exempt equipment in HFTD areas and HFRA's to reduce fire risk by reducing the frequency of all types of ignition events since the exempt equipment is considered "non-expulsion" and does not generate arcs/sparks during normal operation. Accordingly, Replacing distribution fuses with **non-expulsive fuses** to prevent inadvertent sparking as fuses blow.
- Conducting engineering studies to identify ideal locations for **lightning arresters**, devices designed to protect equipment from the damaging effects of lightning. GWP has already installed throughout GWP's electric system, but these locations will be reevaluated for effectiveness.
- Installing **weather station** data equipment and HD camera footage to be monitored 24/7.
- Installing advanced monitoring methods such as Distribution Fault Anticipation (DFA), Early Fault Detection (EFD) and Broken Conductor detection (BCD) technologies on circuits feeding into High Fire Threat District (HFTD) areas or High Fire Risk Areas (HFRA's). These technologies measure different electrical parameters over the distribution circuits and along with analytical methods may be able to detect issues and fire risks resulting from non-equipment failure type outage (where no problems are found) early in their degradation mode. One sensor per circuit will be installed at initiating substation in the HFRA and HFTD areas.
- Installing line sensor devices on circuits feeding into HFTD areas or HFRA to cover mainline and major tap lines in areas meeting minimum load requirements and within cellular coverage areas to provide visibility

Based upon these, and similar, criteria, each project will be evaluated for the best-fit solution, funded through the annual budgeting process, and implemented based upon priority. These efforts are intended to reduce the likelihood of GWP equipment igniting a wildfire.

GWP intends to also ensure rapid and safe restoration by improving the resiliency of its infrastructure against wildfire damage. For example, in those areas especially prone to wildfires, GWP will identify wood poles that could be replaced with non-flammable (e.g., steel or concrete) and/or taller poles. This type of action would not necessarily prevent wildfires, but it would speed restoration after a wildfire. These activities will be on-going and are subject to adjustment, depending upon the results of GWP's investigations and studies.



Glendale Water & Power Wildfire Prevention and Mitigation Plan

Operations & Maintenance (O&M) Efforts

Prioritization of wildfire mitigation efforts includes tailoring GWP's O&M resources to meet or exceed state utility standards to minimize the risks posed by vegetation and equipment failure. Funding shall be allocated through the annual budgeting process and is subject to management and City Council approval.

- **Vegetation Management – Reduction of Ignition.** GWP's existing vegetation management program is on a two-year cycle, ensuring that all trees under power lines have been trimmed at least bi-annually. Vegetation management practices is expanded to exceed minimum clearance requirements (as described in GO 95) by trimming trees down to the telecommunications layer and to clear hazardous vegetation in both Tier 2 and Tier 3 zones. GWP's more aggressive tree-trimming policy may also include trimming or removing trees that could fall onto overhead power lines from above.
- **Vegetation Management Program (VMP) – Limiting the Spread of Wildfires.** Reducing the risk of spreading wildfires posed by hazardous vegetation near structures is achieved, in large measure, by leveraging the City of Glendale Fire Department's Hazardous Vegetation Management Program (VMP); the VMP reduces the risk of a home igniting from a nearby wildfire by controlling hazardous vegetation within 100 feet of the home.
- **Inspections.** Expanding asset inspections and refining its master plan to address end-of-life infrastructure management. In January of 2021, GWP issued a Request for Proposals (RFP) to solicit proposals from qualified engineering firms to conduct a complete assessment of all overhead and underground assets. In May of 2021, Council awarded a three-year contract to an Engineering firm to provide Transmission & Distribution System inspection. This assessment includes pole inspections, vault inspections, and inspections of all assets connected to (or within) these assets, including (but not limited to) transformers, crossarms, insulators, conductors, cables, landings, capacitor banks, voltage regulators, and all other attachments. This program, consistent with GO 165, shall assess the condition of GWP assets and provide a mechanism to prioritize repair and replacement. Maintaining robust infrastructure will minimize the likelihood of downed power lines or failed equipment that can spark and ignite **wildfires**.
- **Reclosers.** Modifying recloser settings during high-risk periods to minimize the likelihood of inadvertently reclosing in a high-wildfire risk area.
- **Equipment Failure.** According to information collected by GWP staff, over 40% of equipment failures in recent GWP history were transformer failures and overhead conductor failures. GWP has instituted an on-going process to replace aged transformers, which are more likely to fail by tracking characteristics like age, installation date, manufacturer, loading factor, and size for each transformer. Currently, transformers with more than 40 service years are prioritized for replacement. The failure of overhead conductors can ignite a fire if the line is still energized when it touches the ground; GWP is investigating technological solutions to de-energize a falling conductor before it touches the ground. The probability of overhead conductor failure has been reduced.
-



Glendale Water & Power Wildfire Prevention and Mitigation Plan

Wildfire Mitigation Budget Measure

Project #	Project Description	FY 2021-2022 Budget	FY 2022-2023 Budget	FY 2023-2024 Proposed Budget
GWP00653AA	Wildfire Mitigation	\$50,000	\$200,000	\$50,000
GWP00642AA	Pole Replacement	\$175,000	\$300,000	\$300,000
GWP00652AA	4kV/12kV Feeder Upgrade	\$3,000,000	\$7,000,000	\$7,000,000
GWP00656AA	Distribution Expansion	\$30,000	\$150,000	\$50,000
GWP00643AA	Transmission & Distribution Inspection Program	\$1,000,000	\$1,000,000	\$1,000,000
43110 Contract	Tree Trimming Contract	\$2,500,000	\$2,800,000	\$2,800,000
Total		\$6,755,000	\$11,450,000	\$11,200,000

General Project Description

GWP00653AA	System hardening and installation of composite poles and tree wires
GWP00642AA	Pole replacement project within the entire city including Tier 2 and Tier 3
GWP00652AA	Rebuilding power poles for 12 kV Operation within the entire city including Tier 2 & Tier 3. In 12kV operation, the conductors are spread apart, and the risk of fire is lower
GWP00656AA	Converting Overhead to Underground and extending distribution lines for new services
GWP00643AA	Inspection of electrical facilities Incl. Power Poles, Vaults, Pull boxes & Street lights
43110 Contract	Vegetation management in accordance with WMP & California regulatory requirements

Operational Practices as Preventive Measures

- Operational practices** on disabling reclosers, proactive de-energization, and public outreach, as well as leveraging City programs that are consistent with this Plan (e.g., VMP). **Situational practices** by the deployment of high-definition cameras to provide visual coverage of high-risk areas.

To reduce the risk of spread of wildfire, the Glendale Fire Department uses multiple cameras and weather stations at strategic locations to monitor conditions and take immediate action.

Cameras are found at:

Mt. Lukens 1&2, <https://alertca.live/cam-console/2181>

Verdugo Peak 1&2, <https://alertca.live/cam-console/2477>

Mt. Lee North <https://alertca.live/cam-console/2176>

Weather Stations area located at: <https://www.weather.gov/lox/fwmV3>



Glendale Water & Power Wildfire Prevention and Mitigation Plan

10. Metrics

To evaluate the effectiveness of these mitigation measures, GWP intends to:

- Evaluate and measure the effectiveness of this Plan by monitoring and tracking verifiable metrics.
- Establish a baseline by inspecting the condition of its transmission and distribution assets, including poles, switches, reclosers, vaults, and transformers. Based upon these inspection results, submit annual budget requests to repair or replace equipment in a subpar condition. Continue periodic inspections consistent with GO 165.
- Incorporate lessons learned and institutional intelligence specific to GWP to revise this Plan.

Tracking of the initial set of metrics commenced in January 2021. New metrics are tracked, to provide actionable data and feedback. These metrics are intended to provide a quantitative assessment of the effectiveness of the Plan over time. The metrics themselves are not as important as the trends that are quantified in the metrics; accordingly, GWP intends to prioritize its limited resources by minimizing the time spent on gathering metrics in favor of implementing mitigating measures.

As the Plan matures and its effectiveness is measured over time, the metrics will be modified and adjusted, just as the Plan itself will be modified and adjusted based upon performance, successes, and failures.

The formal list of metrics shall demonstrate results and measure the effectiveness of GWP's wildfire mitigation and will include the following:

- After any relay event, where GWP's protective relays automatically de-energize a feeder or transmission line, the following information will be collected during the post-mortem:
 - Did the outage ignite a fire? (yes/no)
 - If the outage ignited a fire, were first responders notified? (yes/no)
 - If the outage ignited a fire, how large was the fire? < 1 acre, 1-50 acres, 50-300 acres, or > 300 acres
 - If the outage ignited a fire, how many structures were impacted? 1, 2-10, 10-50, or > 50
- Number of trees trimmed by GWP.
- Number of poles replaced in Tier 2/3.
- Number of transformers replaced in Tier 2/3.
- Feet/miles of transmission/distribution lines moved underground in Tier 2/3.
- Feet/miles of tree wire installed in Tier 2/3.
- Number of standard (expulsive) fuses replaced by non-expulsive fuses.
- Glendale Fire Department average time to respond to fire incidents.



Glendale Water & Power Wildfire Prevention and Mitigation Plan

Following is the current metric set to track the number of poles, transformers and tree wires that are replaced in Tier 2 and Tier 3 within a given time period.

Wildfire Mitigation Summary From 01/01/2021 To 03/18/2023

Transformers Replaced - Source GIS			
Tier	Overhead	Underground	Pad mount
2	8	11	0
3	1	1	0
Totals	9	12	0

Tree Wire Installed - Source GIS			
Tier	Feet OH	Feet UG	Feet Total
2	223.15	0	223.15
Totals	223.15	0	223.15

Poles Replaced - Source GIS	
Tier	Count
2	17
3	13
Totals	30

In addition, staff established a metric to track the number of facilities that are inspected within a given time period.

Weekly Inspection Report Menu

Streetlight Inspection Report
Pole Inspection Report
Pad Inspection Report
Vault Inspection Report
Pullbox Inspection Report



Glendale Water & Power Wildfire Prevention and Mitigation Plan

GWP funding and capital improvement priorities will be adjusted, based upon the results of these inspections, to replace and harden equipment and assets that are flagged as requiring replacement.

Sample of Pole Inspection Report by Date

From: To:

- 1 = perfect condition
- 2 = normal wear-and-tear and/or minor damage that does not pose any safety concerns or compromised operation
- 3 = significant wear-and-tear and/or damage that could pose a safety concern or sub-optimal operation (including that potential for operational failure), flag for future remediation/repair/replacement
- 4 = imminent failure and/or asset poses a legitimate and likely safety concern, schedule remediate/replacement/repair
- 5 = complete failure, requires immediate/emergency replacement [Note: any equipment in this category should be reported to the primary GWP contact on the same day it is identified.]

Pole Number	Address	Inspection Date	Repair Priority
12481A	LAUDERDALE AV E/S 272' S/o LOS AMIGOS ST EXTD	2023-03-06	PASS
14526A	LOS OLIVOS LN N/S 378' W/o BOSTON AV	2023-03-28	PASS

Sample of Vault Inspection Report by Date

From: To:

- 1 = perfect condition
- 2 = normal wear-and-tear and/or minor damage that does not pose any safety concerns or compromised operation
- 3 = significant wear-and-tear and/or damage that could pose a safety concern or sub-optimal operation (including that potential for operational failure), flag for future remediation/repair/replacement
- 4 = imminent failure and/or asset poses a legitimate and likely safety concern, schedule remediate/replacement/repair
- 5 = complete failure, requires immediate/emergency replacement [Note: any equipment in this category should be reported to the primary GWP contact on the same day it is identified.]

Vault Number	Address	Inspection Date	Repair Priority
1	GLENDALE AVE. A/W 1ST VAULT N/O HARVARD ST.	2023-03-20	1
1005	PIEDMONT AVE (2731) PP 130' N, 600' E/O LA CRESCENTA AVE	2023-03-07	1

Sample of Pullbox Inspection Report by Date

From: To:

- 1 = perfect condition
- 2 = normal wear-and-tear and/or minor damage that does not pose any safety concerns or compromised operation
- 3 = significant wear-and-tear and/or damage that could pose a safety concern or sub-optimal operation (including that potential for operational failure), flag for future remediation/repair/replacement
- 4 = imminent failure and/or asset poses a legitimate and likely safety concern, schedule remediate/replacement/repair
- 5 = complete failure, requires immediate/emergency replacement [Note: any equipment in this category should be reported to the primary GWP contact on the same day it is identified.]

Pullbox Number	Address	Inspection Date	Repair Priority
PB_1001	3552 PROSPECT AVE	2023-03-28	1
PB_1036	N/A	2023-03-08	3



Glendale Water & Power Wildfire Prevention and Mitigation Plan

11. Metrics Feedback

As GWP monitors and evaluates the metrics described in the previous section, it should also adjust this Plan to ensure these goals are achieved. During the annual review of this Plan, the following general questions should be reviewed with respect to the existing metrics:

- **Metric Not Met.** If a metric was not met, determine the cause. Review the metric for appropriateness – is the metric too strict, given GWP’s resources? Are additional resources required to improve the metric performance? Will additional resources have an impact on performance, or is the return on investment minimal?
- **Metric Significantly Exceeded.** If a metric was significantly exceeded, review the metric for appropriateness. It is possible that the metric is too easily achieved, making the metric meaningless.
- **New or Obsolete Metrics.** Review any proposed new metrics and determine whether existing metrics are obsolete. Experience, legislative drivers, and management priorities can trigger the development of new metrics and the retirement of obsolete metrics.
- **Adjustments Based Upon Metrics.** Based upon performance against these metrics, this Plan should be updated to adjust priorities and goals. For example, once a known issue has been mitigated, it should transition from “active construction” to “active monitoring.”



Glendale Water & Power Wildfire Prevention and Mitigation Plan

12. Operational Practices

The City of Glendale's operational practices are coordinated across Departments and implemented independently by each Department.

Citywide

The City of Glendale's Emergency Response Plan¹⁰ addresses the City's planned response to extraordinary emergency situations associated with natural disasters, technological incidents, and national security emergencies. The Plan does not address normal, day-to-day emergencies or the well-established and routine procedures used in coping with such emergencies. Instead, the operational concepts reflected in the Plan focus on potential large-scale disasters which can generate unique situations requiring unusual emergency responses.

The City's Hazard Mitigation Plan¹¹ provides a set of action items that, if implemented, can help reduce the risk from hazards through education and outreach programs, the development of partnerships, and the implementation of preventive activities (such as land use programs) that restrict and control development in areas subject to damage from natural hazards.

City of Glendale personnel involved in emergency response and emergency management functions are provided ongoing training, including local workshops, SEMS¹² training, NIMS¹³ training, and other special programs throughout the year. Key management and emergency personnel also attend the California Specialized Training Institute to receive in-depth training in related emergency management topics.

GWP

Engineering and field personnel will periodically review operational practices to identify preventative strategies and enhanced operational procedures to minimize and mitigate the risk of causing and/or spreading catastrophic wildfires, both during periods of high danger as well as during normal operating conditions.

The Principal Power System Operator oversees the real-time System Dispatch function and provides on-going, topical training to all Power System Operators (PSO's). At least two PSO's staff a Dispatch desk 24/7 to monitor and control GWP's electric grid while dispatching field crews to investigate and resolve problems, or to schedule work, on GWP electrical infrastructure.

¹⁰ <https://www.glendaleca.gov/government/departments/fire-department/other/emergency-preparedness-response/city-emergency-plans>

¹¹ <https://www.glendaleca.gov/Home/ShowDocument?id=48978>

¹² Standardized Emergency Management System, which unifies all elements of California's emergency management community into a single, integrated system with standardized key elements. See <https://www.caloes.ca.gov/cal-oes-divisions/planning-preparedness/standardized-emergency-management-system> for more information.

¹³ The Federal Emergency Management Agency's (FEMA's) National Incident Management System, which guides all levels of government, nongovernmental organizations (NGO), and the private sector to work together to prevent, protect against, mitigate, respond to, and recover from incidents. See <https://www.fema.gov/national-incident-management-system> for more information.



Glendale Water & Power Wildfire Prevention and Mitigation Plan

The Substation Operations Training Program includes training on system protection and trouble response; topics include discussions on preemptive de-energization, rolling blackouts, and automatic system protection schemes. This training is provided to all new PSO's, as well as to seasoned PSO's on an annual basis.

Operationally, the PSO retains the authority and obligation to de-energize electrical equipment, sub-transmission lines, and/or distribution feeders in the event of a high wildfire danger. The decision to preemptively de-energize GWP equipment is described further in GWP Standard Operating Procedure SOP-021 and is based upon multiple factors, including Red Flag Warnings, system conditions, and other operational considerations. The PSO considers several factors before de-energizing overhead lines during periods of extreme wildfire danger:

- Hospitals
- Elder care facilities
- Communications equipment (e.g., cell phone towers, pole-mounted cell sites)
- City of Glendale Public Works facilities (e.g., sewer)
- First responder facilities, including police, fire, and local government facilities
- Community information facilities (e.g., radio equipment).
- GWP Water Division and Crescenta Valley Water District systems, which maintain water quality, water supply, and water pressure to residents and to the Glendale Fire Department for fighting fires.

De-energization is always the PSO's option of last resort, given the potential impacts of de-energization as described below (e.g., traffic signals, air conditioning during high temperatures, lack of electricity to water facilities to fight fires, etc.). In the event preemptive de-energization is initiated, every attempt to minimize the number of affected customers is made by sectionalizing only the effected feeders or transmission lines.

Per SOP-021, it is GWP's policy to preemptively de-energize overhead transmission and distribution lines and to disable automatic reclosers in the Tier 2 or Tier 3 zones during periods of extreme wildfire danger, or at other times as deemed necessary by GWP, with the intent of reducing the risk of igniting a wildfire from energized equipment.

During these periods of extreme wildfire danger, if a protective scheme (e.g., relay or recloser) automatically de-energizes a feeder, GWP crews will physically patrol a feeder to identify and clear the cause of the protective action before any attempts are made to re-energize the circuit.

The benefits of preemptive de-energization are offset by the challenges and potential dangers of widespread and extended power outages during periods of high temperatures. As discussed in **18. Enterprise-Wide Risks**, the supply of safe drinking water, water for firefighting, infrastructure used for public safety, and the overall impacts of power outages could all potentially be compromised. Therefore, the decision to de-energize customers must be the solution of last resort after all wildfire mitigation efforts have been exhausted.



Glendale Water & Power Wildfire Prevention and Mitigation Plan

Thus far, GWP has never de-energized a feeder that would result in customer outage. Glendale reacts proactively whenever there is a Red Flag warning issued for the area by the National Weather Service, and de-energizes the Glendale's 34.5 kV "Bel Aire-Montrose" transmission line. Also, before the line is re-energized, a lineman patrols to confirm that the line is intact and that there is no debris lodged across the insulators or the lines. Overwhelming majority of the area serviced by GWP is classified as 'Urban', with clear access by the city Fire Department, therefore the possibility of wildfire is very low, but there is a single sub-transmission line mentioned in the above paragraph "Bel Aire-Montrose line" that runs across an uninhabited hilly terrain covered with brush; it has limited vehicular access. This is an area of elevated fire risk. For that reason, GWP de-energizes this transmission line (without loss of customer load) each time the National Weather Service issues a Red Flag Alert.

The PSOs conduct and complete annual and periodic training on their job responsibilities, processes, procedures, and practices. This training includes their authority to de-energize customers as needed to prevent potential ignitions during extreme fire conditions, as well as during periods where there is insufficient energy supply to meet load requirements. SOP-021 is also covered in this training, including notification requirements before initiating planned de-energization of customers. System conditions can change rapidly, so in an emergency, the PSO may opt to de-energize first, then conduct the required notifications. GWP will make a case-by-case decision to shut off power based on the following factors:

- Red Flag Warnings issued by the National Weather Service for wildfire weather zones that contain GWP circuits.
- Real-time input from fire experts and vegetation experts.
- Input from local and state fire authorities regarding the potential consequences of wildfires in GWP territories.
- Alternative ways to reroute power to affected areas.
- operational considerations to minimize potential wildfire ignitions, including the blocking of reclosers on the identified circuit(s).
- On-going fire activity throughout GWP territory.
- Potential impacts to communities and customers.

While the PSOs determine whether and when de-energization is necessary, the field crews work in tandem with the PSOs to conduct field switching (as necessary, and as directed by the PSOs), patrol de-energized lines prior to re-energization, and repair damage to equipment and lines discovered during patrols. This is consistent with their usual duties and is folded into their standard job responsibilities and practices.

Energy Supply and Procurement Contingencies

Should the Los Angeles Department of Water & Power (LADWP), Southern California Edison (SCE), or other utilities elect to de-energize major transmission corridors during periods of



Glendale Water & Power Wildfire Prevention and Mitigation Plan

extreme fire danger (which usually correlate with periods of high electrical loads), the City will be forced to procure replacement energy from alternate energy sources to meet load.

Given GWP's load and contingency obligations during periods of peak load, the loss of a major transmission line could result in the loss of 100 MW or more of imported energy. Options to replace this energy are limited to local generation capability (e.g., Grayson) or purchases of energy that rely upon LADWP transmission. Most GWP transmission is closely tied to LADWP transmission, meaning the loss of GWP transmission likely includes the loss of LADWP transmission, further straining the local transmission grid. When GWP's transmission capacity is curtailed during periods of high load, LADWP is unlikely to have excess transmission capacity to sell to GWP, at any price; even if GWP could find an energy provider, it would be unlikely to be delivered to the Glendale (69 kV) side of the Air Way receiving station.

The next option would be to generate the energy locally (e.g., Grayson). The proposed repowered Grayson power plant must be sufficient to accommodate the loss of 100 MW of transmission import capability, which reflects the amount of transmission capacity that would be lost if the Pacific Direct Current Intertie (PDCI) transmission line were to be de-energized. However, should this local generation not be available when needed (for example, if the repower were to not occur), GWP would have insufficient capability to meet its load and contingency obligations while the PDCI were de-energized.

In the event GWP is unable to procure energy delivered to the Air Way receiving station or to generate the replacement energy locally, it would be forced to initiate rolling blackouts to balance its load with delivered energy. These rollouts would continue until the lost transmission capability is restored. In other words, preemptive de-energization of transmission lines, initiated by a party other than GWP, could result in rolling blackouts within the City of Glendale. In the scenario where an outside agency's actions caused a lack of energy supply to the City of Glendale, advanced notification to customers would likely not be possible given that the energy shortage would occur with no more than a few hours' notice, though "best efforts" would be initiated to provide notice when possible.

GWP has acquired a new Outage Management System (OMS) by DataVoice International Inc., which allows efficient and quick notification to our customers of impending power outage, whether than outage is due to generation shortage or due to PSPS.

GWP Dispatch maintains a rolling blackout schedule that is initiated at the direction of the Integrated Resource Planning Administrator or delegate.

To increase our generation reliability, GWP is planning more distributed generation in the city, namely by installing photovoltaic panels and battery storage. One of the projects involves placement of solar panels on city-owned properties, such as roof-tops and parking structures that are owned by the city of Glendale. Another project is considering the placement of 25 MW of battery storage at possibility Montrose Substation. In the future, GWP plans to install 50 MW of battery storage at the Utility Operations Center yard (UOC), close to GWP's power generation.



Glendale Water & Power Wildfire Prevention and Mitigation Plan

13. Customer Outreach

Prevention and Strategy

GWP will maintain a multi-level outreach and education strategy to create public awareness of fire threats, fire prevention, and support during a wildfire or a de-energizing event. GWP will work with the public, community leaders, and other agencies to collaboratively discuss fire-safety processes regarding public safety. These collaborations will provide forums for public education and opportunities to exchange improvement ideas and practices. Provide fire-safety and emergency preparedness communications such as general market TV, streaming radio, out-of-home (bulletins/posters/transit), digital ads, etc.

GWP partners with first responders, health care facilities, and operators of telecommunications infrastructures. GWP, in coordination with the Glendale Fire Department, proactively alerts customers on the Life Support list it maintains. GWP maintains a Public Safety Power Shutoff webpage for its website at <https://www.glendaleca.gov/wildfiremitigation> to provide information on power shut offs and fire mitigation plans, and a link to this page from the main GWP website will also be added. This webpage will be used to ask customers to update their GWP account information and emergency contact preferences, and to provide a link to both the login page to GWP account information and to the Everbridge Emergency Contact Information webpage. GWP will develop informational brochures on wildfire mitigation safety and what to do when a de-energizing event is called, referencing the website in all collateral items produced and distributed. On the dedicated Public Safety Wildfire Mitigation webpage, customers will be able to find the following information:

- GWP's adopted Wildfire Mitigation Plan;
- Information on how GWP mitigates wildfire risk;
- Emergency preparedness tips and guide;
- Information on what not to do during Red Flag Warnings (e.g., BBQs, smoking outdoors, throwing ashes out, etc.);
- Links to any additional resources;
- Links to GWP Account Information & Everbridge Emergency Notification sign-ups;
- Frequently-Asked Questions (FAQs) on the power shut-off process.

De-Energization (Public Safety Shutoff Event)

During an extreme weather event, GWP will actively provide customer outreach and support through a targeted communications strategy, with the goal of providing as much advance notice as possible. GWP will inform its customers of expected severe weather conditions and directly notify affected customers through established points of contacts such as email, phone, text, and/or push notifications. GWP will also alert customers through its social media platforms, alert the media, work with the City's Fire and Police PIO offices and websites, and post rolling



Glendale Water & Power Wildfire Prevention and Mitigation Plan

messages on local television (GTV6) and on the City's and GWP's websites. GWP can initiate automated pre-recorded phone calls to customers in the impacted areas, advising when the outages are called and directing customers to the dedicated GWP website for up-to-date information. Pre-recorded IVR (Interactive Voice Response) messages will have real-time recorded information informing customers that may be impacted. GWP will also post messages on its website and through its Mobile App, social media platforms, changeable and movable road signs and In-Home Digital Display program for targeted push messaging. Messaging will increase in urgency as the certainty of a Public Safety Power Shutoff approaches. Finally, in addition to alerting its customers, GWP will also notify, as a priority, first responders' PIO offices, health care facilities' communication offices, and the offices of the building engineers, the Chief Executive Officer (CEO), and operators of telecommunications infrastructure.

For customers on Life Support, GWP, if notified, will contact these customers through phone calls. Two phone attempts will be made, and an email will be sent if there is an email address on file. If no response is received, GWP will dispatch a field crew to contact the Life Support customer. GWP will also keep local news and radio outlets informed.

Timing of notifications

When GWP determines a preemptive de-energization is required, either because another entity's actions suddenly limits GWP's energy supply (e.g., Southern California Edison initiates a Public Safety Power Shutoff – PSPS – on a transmission line that impacts GWP's incoming transmission capacity) or due to the PSO's system assessment, GWP will provide advance notifications in three phases:

1. Advanced notification (when possible)
 - 48 hours before electricity is turned off
 - 24 hours before electricity is turned off
2. Shutoff notification just before electricity is turned off
3. Notifications during the event

Post event notifications will be provided to notify customers that power has been restored.



Glendale Water & Power Wildfire Prevention and Mitigation Plan

14. Vegetation Management

As described in this Plan, the majority of acreage burned by wildfires triggered by electric utilities was determined to be due to vegetation contacts and equipment failure. GWP oversees a contracted arborist that implements GWP's vegetation management program intended to mitigate the risk posed by vegetation contacts. This program is consistent with **General Order (GO) 95 – Rules for Overhead Electric Line Construction**, including the clearance requirements described in **Section III – Requirements for All Lines, Rule 35 Vegetation Management**. GWP staffs Line Clearance Forestry Supervisors who spend most of their time in the field, overseeing the contractor and monitoring vegetation under GWP transmission and distribution lines. These Supervisors are typically certified arborists who identify all trees that need trimming, direct the contractor to specific trees and/or areas that require trimming, and then confirm afterward that the identified trees have been trimmed to GWP standards.

Although the highest wildfire risk is presented in the Tier 2 and Tier 3 zones of the City, the Supervisors monitor the entire City for dangers posed by vegetation under GWP lines.

In fiscal year 2022-2023, GWP had budgeted approximately \$2,500,000 to fund a contractor to conduct tree-trimming activities. For the fiscal year 2022-2023, GWP has increased its tree-trimming budget by approximately \$300,000 for enhanced tree-trimming activities; these enhancements may include larger clearances, expansion of tree-trimming to nearby trees not directly under power lines, and other clearing of hazardous vegetation near power lines.

As part of its risk assessment to prioritize mitigation efforts, GWP has engaged the City of Glendale's Fire Department to leverage its Vegetation Management Program (VMP). The VMP was developed to ensure there is adequate defensible space around buildings in the wildland-urban interface. Activities include annual inspections and review/permitting of landscape and fuel modification plans for properties in the high wildfire hazard area. Property owners are required to maintain a 100-foot radius of defensible space (i.e., remove hazardous vegetation) around all property structures, including homes, backhouses, sheds, etc. The majority of GWP's electrical assets also reside within this 100-foot radius, so even if a localized fire were ignited by failed GWP equipment, the likelihood of this fire igniting nearby buildings would be reduced. Therefore, GWP can focus its resources on mitigating electrical assets that are outside of the zones covered by the VMP. The VMP facilitates GWP's ability to focus on mitigation of electrical assets on a subset of its assets, potentially improving the success and rate of its mitigation efforts.

GWP maintains an electronic tree database that tracks the inspection, trimming, and auditing activity, by containing an inventory number of trees. An inventory tree is one that could encroach the minimum required clearance or otherwise impact the electrical facilities within two-years of the inspection date. Check with John if in some places it is annually



Glendale Water & Power Wildfire Prevention and Mitigation Plan

Vegetation management in GWP service area is performed by the same Electrical Line Mechanics that are involved in the installation and maintenance of power lines and all other overhead equipment; it usually takes place under the watchful eye of GWP's Electrical Line Mechanic Supervisor II. Vegetation management has been expanded to exceed minimum clearance requirements as described in GO 95, by trimming trees down to the telecommunications level. Fiscal year 2022-23, we spent \$ 0.78 million on vegetation management.

15. System Inspections

As described in this Plan, the majority of acreage burned by wildfires triggered by electric utilities was determined to be due to vegetation contacts and equipment failure. GWP leverages GO 165 requirements as a "best practice" to provide guidance on system inspections that are intended to identify failing equipment that may ignite a fire.

As part of its Master Plan, GWP conducts a system inventory that includes a system-wide inspection of its poles, streetlights, vaults, and all equipment and assets connected to, or contained within, these assets. GWP funding and capital improvement priorities will be adjusted, based upon the results of these inspections, to replace and harden equipment and assets that are flagged as requiring replacement. This system-wide inspection program commenced in November of 2022, by a qualified, contracted engineering firm that will formally inspect and assess of all overhead and underground assets. As assets are inspected, GWP will remediate based upon these inspection results and will issue work orders to address any problems that were observed: replace poles, repair equipment, etc. The completed inspection report will establish a baseline condition assessment of system assets; this program will establish the new inspection program going forward, and GWP staff will conduct all subsequent assessments as part of an on-going inspection program, consistent with the requirements of GO 95 and GO 165.

In fiscal year 2022-2023, GWP budgeted \$1M per year for the contracted engineering firm to inspect the electrical facilities.

GWP has dedicated staff who are responsible for the preventative and routine inspections, construction, installation, maintenance, and repair of all transmission and distribution assets. For the fiscal year 2022-2023, GWP has budgeted capital and O&M funds related to wildfire mitigation, including system hardening, substation and distribution automation, and vegetation management.

The City of Glendale's VMP, managed by the Glendale Fire Department, includes annual inspections of properties in the high fire hazard areas of the City to ensure compliance with its defensible space standards (see Exhibit B).



Glendale Water & Power Wildfire Prevention and Mitigation Plan

16. Wildfire Risks and Drivers

The City of Glendale's wildfire risk is driven by controllable and uncontrollable factors. The City's topography consists of both a highly-developed urban center and mountainous open spaces with frequently dry vegetation; this diversity adds complexity to GWP's wildfire mitigation efforts and requires a surgical approach to tailored mitigation efforts in each area of the City. Climate change exacerbates the already hot, dry weather common to Glendale, as well as the seasonal winds, as discussed in **Section 9. Preventative Strategies and Programs**, and is assumed to only exacerbate GWP's wildfire risk going forward, namely with respect to making dry fuel available for ignition and for spread. This Plan focuses on preventing wildfires from being caused by inadvertent vegetation contacts with, or failures of, GWP electric utility equipment. Prevention of wildfires ignited by other causes (e.g., intentionally-set fires, accidental human-caused fires, etc.) are not considered.

GWP aims to reduce the risk of starting and spreading wildfires, acknowledging that it is not feasible to achieve zero risk. To that end, GWP has adopted a risk-based approach to prioritize capital improvements, Operations and Maintenance (O&M) work, and changes to operating procedures to achieve the objective stated in **Section 8** of this Plan.

This prioritization leverages historical data that measures the relative size (in this case, measured in acreage of burned land) of California wildfires and that describes the causes of the wildfires.

Historical data confirms that the majority of acreage burned was due to vegetation contacts and equipment failure.

To quantify the size (in acreage) of historical fires, 2016-2021 wildfire statistics from Cal Fire¹⁴ indicate:

- **44% of the acres burned were due to fires initiated by vegetation contacts** – i.e., trees touching power lines, causing sparks and starting fires. Plentiful brush and undergrowth can also facilitate rapid expansion of wildfires once the initial spark is provided.
- The majority of the acreage burned due to vegetation contacts occurred in 2018, which skews the acreage burned due to vegetation contacts. **41% of the total acres burned were caused by equipment failure** – i.e., failed hardware that possibly sparked or exploded and started fires.
- The majority of the acreage burned due to equipment failure occurred in 2016, which skews the acreage burned due to equipment failure. **14% of the total acres burned were caused by lines down** – i.e., energized power lines that touched the ground and started fires. Equipment and hardware failures are discussed in more detail below.

¹⁴ “2016 Wildfire Activity Statistics,” “2017 Wildfire Activity Statistics,” “2018 Wildfire Activity Statistics,” “2019 Wildfire Activity Statistics,” “2020 Wildfire Activity Statistics,” *Historical Wildfire Activity Statistics (Redbooks)*, http://www.fire.ca.gov/fire_protection/fire_protection_fire_info_redbooks. (Accessed September 21, 2018)

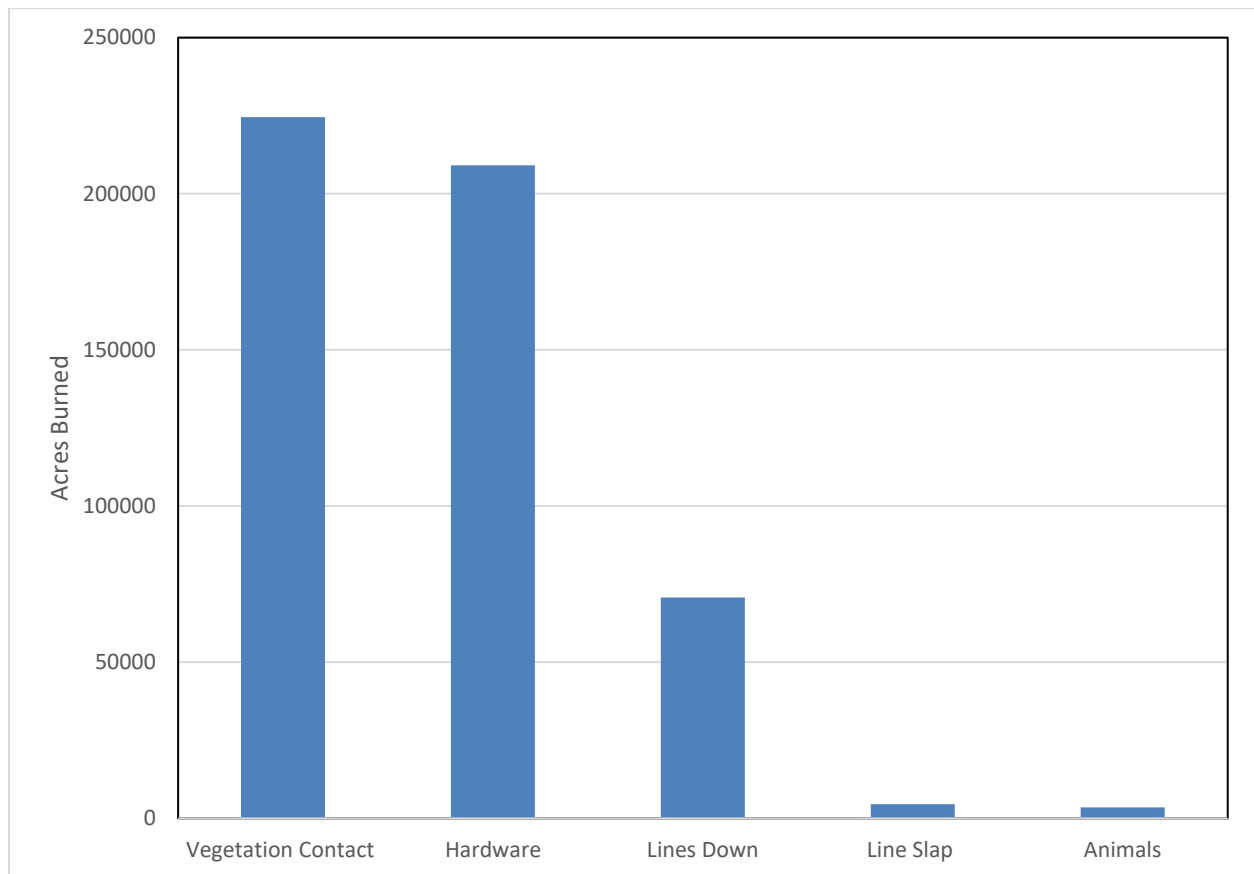


Glendale Water & Power Wildfire Prevention and Mitigation Plan

- The acreage burned due to animals (e.g., squirrels shorting lines and starting a fire) and line slap (transmission lines touching during high winds) was negligible.

The chart below summarizes this data.

Figure 1. California Wildfires: Number of Acres Burned by Cause (2016-2021)

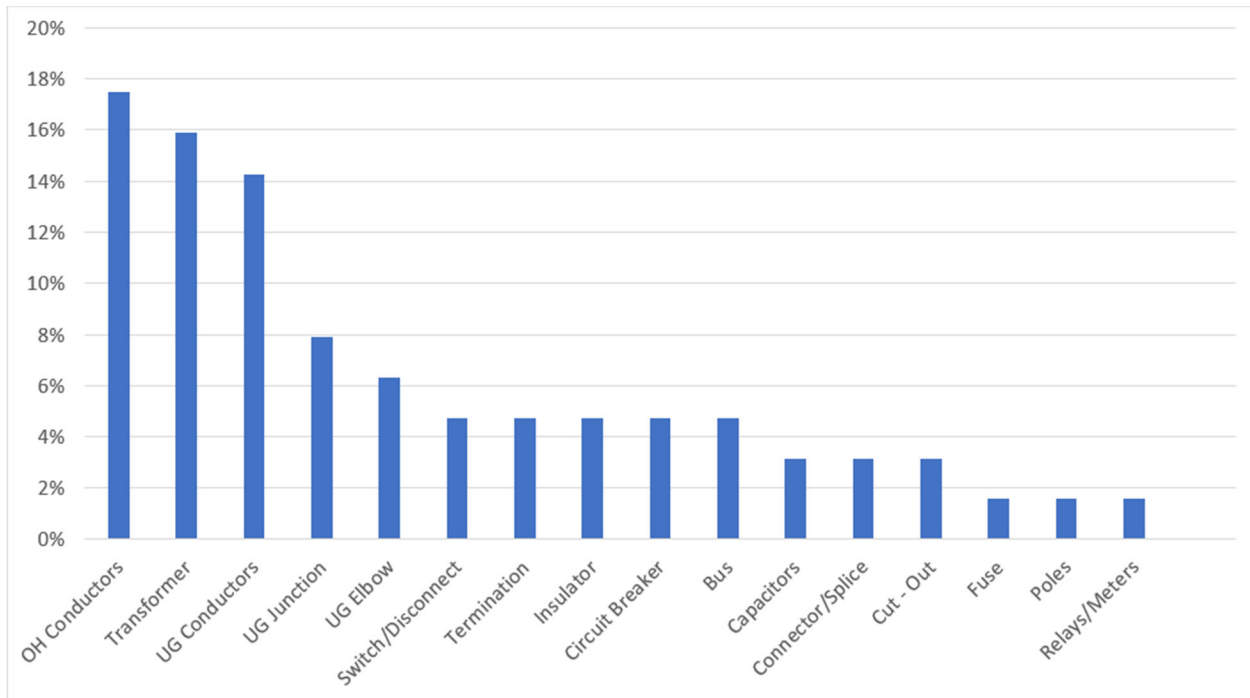




Glendale Water & Power Wildfire Prevention and Mitigation Plan

GWP concurs that its own risks stem largely from vegetation contacts and equipment failure. Equipment failures from 2009 – 2018, based upon historical GWP data, show that the largest number of equipment failures came from transformers, overhead conductors, insulators, and switches and disconnects. The chart below summarizes this data.

Figure 2. Outages Based on GWP Equipment (2012-2022)



GWP’s transformer-replacement program prioritizes life-cycle replacement of transformers that are over 40 years old to minimize the likelihood of transformer failures igniting wildfires.

As part of its review of assets in the Tier 2 and Tier 3 zones, GWP Electric Engineering has identified overhead feeder and transmission line sections at highest risk of igniting and spreading wildfires. These sections will be analyzed on a case-by-case basis for the most appropriate mitigation approach, as discussed in **Section 9**.



Glendale Water & Power Wildfire Prevention and Mitigation Plan

17. Wildfire Zones

GWP has leveraged the tiered zones developed and mapped by Cal Fire; the Glendale Fire Department's independent wildfire zone assessment¹⁵ correlates strongly with Cal Fire's maps and assigns similar levels of risk to these areas. GWP does not anticipate making any changes to these maps and accepts them as provided. In addition, Section 7 of the City's Hazard Mitigation Plan contains the City's independent assessment of wildfire risk within the City of Glendale. CalFire's methodology reflects the risk of a wildfire igniting and spreading by classifying each area within the City of Glendale as Tier 1 (low risk), Tier 2 (elevated risk), or Tier 3 (extreme risk).

The Fire Area Map in Exhibit A is from 2018 and shows that, approximately 48% of the City of Glendale falls within Tier 2 and 14% falls within Tier 3. GWP intends to prioritize its efforts to mitigate wildfire hazards within these areas, which cover nearly 62% of the City's area.

GWP and the Glendale Fire Department, working in concert, significantly reduce the wildfire risk imposed by hazardous vegetation:

- GWP's aggressive, City-wide tree-trimming program, consistent with GO 95, reduces the likelihood of trees coming in contact with live transmission and distribution wires.
- The City of Glendale's Vegetation Management Program (VMP) reduces the intensity and rate of spread of a wildfire near buildings, reducing the risk that nearby buildings will be ignited. The majority of GWP's electrical assets reside within 100 feet of structures on private property (where property owners are required to manage vegetation), so only 0.47% of the City's Tier 2 and Tier 3 land area contains GWP electrical assets that require additional mitigation to reduce the risk of igniting a spreading wildfire; this is compared to the nearly 62% of the City's area that is within the Tier 2 and Tier 3 zones.

By applying this risk-based approach of focusing wildfire mitigation resources on GWP's overhead resources in unmitigated areas, only 0.47% of the City's Tier 2 and Tier 3 land area contains GWP assets that require additional mitigation.

By applying prudent vegetation management programs, GWP has decreased the City of Glendale's wildfire exposure from 62% of its land area to 0.47%, a 99.5% decrease; this reduction in scope provides clear guidance on the remaining areas requiring additional wildfire mitigation. Figure 3 summarizes the impact of the existing mitigating measures, and Figure 4 graphically illustrates the level of mitigation currently in place. GWP intends to focus its added wildfire mitigation efforts and resources on mitigating the remaining electrical assets in these Tier 2 and Tier 3 zones.

¹⁵ City of Glendale's High Fire Hazard Area map, <https://www.glendaleca.gov/home/showdocument?id=50019>



Glendale Water & Power Wildfire Prevention and Mitigation Plan

Figure 3. GWP Assets Currently Mitigated vs. Requiring Additional Mitigation

	Total Assets				Liable Assets Requiring Additional Mitigation				Reduction	Requires Additional Mitigation
	Tier 1	Tier 2	Tier 3	Citywide	Tier 1	Tier 2	Tier 3	Citywide		
Overhead T+D Lines (miles)	206.2	60.6	15.6	282.4	-	9.6	3.4	13.0	95.4%	4.6%
Poles / Towers	11,303	2,899	703	14,905	-	185	60	245	98.4%	1.6%
Transformers	3,528	673	165	4,366	-	23	3	26	99.4%	0.6%
Pole Switches	523	108	16	647	-	10	1	11	98.3%	1.7%
Pole Disconnects / Fuses	1,098	232	49	1379	-	7	5	12	99.1%	0.9%
Reclosers	28	12	3	43.0	-	1	0	1	97.7%	2.3%
Area Coverage	38%	48%	14%	100%	-	0.29%	0.18%	0.47%*	99.5%	0.5%
Electric Meters	77,524	10,889	1,945	90,358	-	5	1	6	100.0%	0%
Structures / Buildings	44,469	11,622	2,248	58,339	-	0	0	0	100.0%	0%

* Refer to page 5 of report, Methodology for calculating high-wildfire danger areas in the City of Glendale

Eliminate the area from Tier 2 and Tier 3 where

1) there are no GWP electrical assets

2) electrical assets reside within 100 feet of a private structure, are cleared by vegetation (VMP program)

3) Divide the remaining area from Tier 2 & Tier 3 to the entire City area to get 0.47%

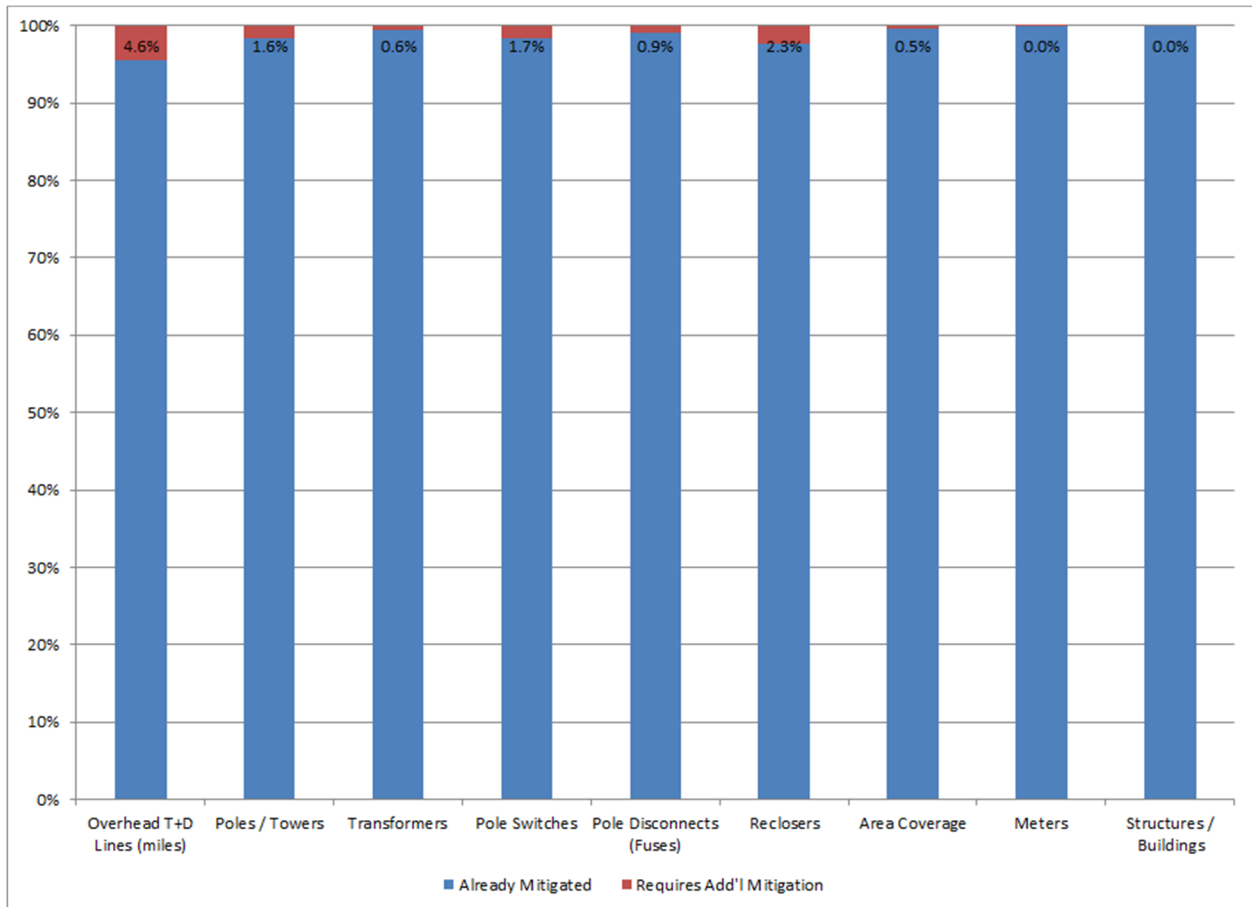
The number of liable assets in Tier2 and Tier 3, requiring additional mitigation from Figure 3 is:

Overhead Assets	Liable Assets Requiring Additional Mitigation		
	Tier 2	Tier 3	Citywide
Overhead T&D Lines (Miles)	9.6	3.4	13
Poles	185	60	245
Transformers	23	3	26
Pole Switches	10	1	11
Pole Disconnects / Fuses	7	5	12
Area Coverage	0.29%	0.18%	0.47%
Electric Meters	5	1	6
Structures / Buildings	0	0	0



Glendale Water & Power Wildfire Prevention and Mitigation Plan

Figure 4. GWP Assets Currently Mitigated vs. Requiring Additional Mitigation





Glendale Water & Power Wildfire Prevention and Mitigation Plan

18. Enterprise-Wide Risks

This Plan discusses mitigating steps and measures intended to “protect City customers, employees, and assets against the potential dangers and costs of damage incurred as a result of wildfires inadvertently initiated by GWP electrical assets and equipment.”¹⁶ These dangers and costs also apply to functions and departments other than the GWP electrical division, including the GWP Water Division, Glendale Information Services, Glendale Police, and Glendale Fire. The primary impacts of a wildfire are the potential for preemptive de-energization of one or more feeders and evacuation of high-danger areas during an active wildfire.

GWP – Water Division

GWP’s Water Division serves over 200,000 residents through 34,000 service connections to residential units and businesses and is an essential partner in public safety by ensuring sufficient water supply to the City of Glendale’s over 3,000 fire hydrants. In order to provide this service, water needs to be pumped from the various points of delivery to the end users.

Due to the topography of the City of Glendale, water is delivered by gravity to the “downtown” area of the City and pumped from this elevation up to the canyons and hills and to the northern elevations of the City. Specifically, the hydraulic elevation, or grade, of the City’s downtown is 724 feet and the highest water service elevation is at 2,483 feet, with several elevations in between. These areas primarily rely upon water storage tanks, which can supply a few hours of water for firefighting purposes to extinguish single structure fires as originally planned and designed when these neighborhoods were developed.

Many of these areas are in what could be called “native brush/urban” interfaces; reliable power to the water facilities can be restricted by wildfires or by proactive de-energization. Since the City has historically had a reliable, local source of generation at the Grayson Power Plant, the water system has not been required to install permanent back-up generation at its facilities. If electrical service to GWP’s pump stations were unavailable for more than a few hours, GWP would be unable to provide additional water to an area where a large brush fire could be occurring. It is estimated that the planning, design, and installation of permanent on-site generation to power critical water facilities would cost around \$10 million; on-going maintenance and operations would be an added annual budgeted expense.

Glendale Information Services

Among its myriad functions, the Information Services Department (ISD) maintains the Citywide radio communications system. Each radio site has unique characteristics and a different degree of resiliency against wildfires and loss of GWP power, depending upon the location and the degree of load on the radio system (more transmitters or more microwave radio links mean a greater power requirement). Each site has a backup battery plant capable of running the entire radio site and, with one exception, has an on-site generator with automatic start and an automatic transfer switch.



Glendale Water & Power Wildfire Prevention and Mitigation Plan

The radio system can run for several days without recharging the batteries (i.e., no generator). ISD has telemetry to report the loss of primary (GWP) power and the status of the generator (running or not), and they are aware of the GWP circuits that feed each site. For those sites not supplied by GWP, they have relationships for information sharing with the site owner and/or other tenants to make each other aware of planned and unplanned outages, as well as site access issues. Therefore, loss of GWP power would not have a significant impact unless the outage were to last for several days; resiliency against wildfires would be dependent upon the intensity and proximity of the wildfire, as physical access would nominally not be required to ensure uninterrupted operation.

The radio system “Master Site” is located near downtown Glendale and ISD also maintains a large battery plant, a fixed generator, and a manual transfer switch with terminals appropriate to connect to any suitable generator there.

During past power outages impacting these radio sites, ISD has recommended that GWP prioritize power restoration to GWP customers since ISD can ensure continued operation for several days without GWP power.

Glendale Police Department

Wildfires and power outages, planned and unplanned, impact the Glendale Police Department (GPD) directly (“First-Order Impacts”), other City services with Police effects (“Second-Order Impacts”), and the community in general (“Third-Order Impacts”).

First Order Impacts:

- **Diesel Backup.** GPD has a 13,500-gallon diesel fuel tank, which provides no more than 95 hours of run time if the tank is full when an extended power outage begins. Typically, these tanks are not kept full and the tank volume fluctuates.
- **Loss of Data Center.** GPD’s data center is not backed up outside of the City. As a result, evacuation due to wildfires or a long-term power loss that extends beyond the diesel backup means an inability to access local criminal justice records until the evacuation is lifted or power is restored. These records can include information supporting arrest warrants, involving active investigations, or related to critical missing persons – this accounts for all records-related functions.
- **Access to Fuel for Vehicles.** GPD’s automotive fuel supplies require power to pump. Thus a loss of power beyond their diesel support means the fleet is drastically limited. They do not have a tanking capacity so would need to execute an emergency contract for fuel services in an area unaffected by power outages, or secure an emergency tanker from another source. The Los Angeles (LA) County Sheriff does not have an emergency tanker, so they would be forced to wait for a tanker from the California Governor’s Office of Emergency Services (Cal OES), or they would drive somewhere to purchase fuel commercially.



Glendale Water & Power Wildfire Prevention and Mitigation Plan

Second Order Impacts:

- **Citywide Fuel for Vehicles.** The City as a whole has access to 115,000 gallons of tanked diesel fuels and a limited capacity to support moving fuel supplies from site to site. This tanked fuel would have to support all City operations. In all likelihood, mission-critical activities like Fire, Police, GWP, and Public Works would be given nearly equal priority in these supplies in the event of evacuation or loss of GWP power. If the fuel is unreachable due to evacuations or wildfire, the capacity of this fuel is further restricted.
- **Police Radio Towers.** Police radio towers use an uninterruptable power supply (UPS) consisting of batteries and generator backup.
- **Emergency 911 Calls.** If the 911 system fails at the Glendale Police building or the building is evacuated due to wildfires, calls roll over to Verdugo Fire. Depending on the location, extent, and duration of a power outage or wildfire, both centers could go down or become unreachable. Neighboring agency facilities have insufficient desk space to accommodate rolling calls to them, even if GPD sent personnel.
- **Internet.** Citywide data connectivity to the Internet, including GPD access, requires GWP power. If the City's primary data center goes down, GPD loses its Internet connectivity to the outside world.
- **Prisoner Impacts.** With an extended loss of GWP power, GPD would experience hindered water deliveries to the police building. They have limited supplies of drinking water, and dealing with wastewater / sewage would become an issue. With a loss of power to the police building or an evacuation, the prisoner population would need to be transported offsite and GPD could no longer hold or book arrestees locally.

Third Order Impacts:

- **Streetlights.** Extended loss of power to the streetlights would increase traffic collisions and dramatically snarl traffic, especially if coupled with a localized evacuation. GPD does not have sufficient staff to manually run traffic control, even at the City's major intersections.
- **Gas Stations.** Extended loss of power to area gas stations would limit local fuel supplies, even to the extent that some residents would enter emergency situations because they are stranded. For example, kids at school may need to be picked up, or people requiring medical care may need transportation.
- **Hospitals.** Evacuation or extended loss of power to area hospitals, if closure was forced, would result in patients being sent to distant facilities. Currently the limited ambulance capacity would be strained by long-range transports, impacting both GPD and GFD.
- **Grocery Stores.** Extended loss of power or a mass evacuation would impact grocery stores. Reductions in food supply would impact the most vulnerable. Many of the City's residents have limited transport ability (primarily, the elderly) who are unable to walk to the corner store for food and supplies.
- **Uninhabitable Areas.** Extended loss of power could create whole neighborhoods that are not serviced by GWP – first power, then water. Eventually, these neighborhoods become uninhabitable. Based upon observations after wildfires, situations like this require increased services on the order of 300% to 500%.



Glendale Water & Power Wildfire Prevention and Mitigation Plan

- **Cellular Services.** The area cellular telephone systems rely upon GWP power and have a limited battery backup. Once the battery backup fails, the cellular network breaks down and citizens will be limited in their ability to care for themselves or request aid.

Glendale Fire Department

Wildfires and power outages, planned and unplanned, directly impact the Glendale Fire Department (GFD). However, the GFD has mitigating measures in place to ensure continued operations.

- **Backup Generators:** GFD has diesel backup power generators at all GFD fire stations. There is sufficient fuel, when full, for 90 to 560 hours of emergency power generation at each station, depending on the size of the generator at the station.
- **Verdugo Dispatch:** Dispatch has a UPS (Uninterruptable Power Supply) with a manual transfer switch to accommodate multiple electric feeds. On a full charge, the backup batteries can run dispatch operations for 10 hours. After 10 hours, dispatch will rely on diesel backup generators at Fire Station 21.



Glendale Water & Power Wildfire Prevention and Mitigation Plan

19. Restoration

GWP restores power after a wildfire or preemptive de-energization in a similar manner, ensuring the assets are in a safe condition prior to re-energization.

GWP maintains a list of reclosers that are disabled in the event of a Red Flag Warning or as determined necessary by the Power System Operators based upon system conditions. These devices are disabled during periods of extreme wildfire danger to minimize the likelihood of inadvertently sparking a fire upon automatic re-energization. Upon restoration, the reclosers will be re-enabled to perform normally.

GWP maintains a list of transmission and distribution lines that must be manually patrolled prior to re-energization, in the event the lines were automatically (e.g., via relay action) or manually (through Power System Operator action) de-energized. System Dispatch notifies GWP staff that the lines are being patrolled in anticipation of re-energization. During these patrols, GWP personnel ensure that structures and equipment are not damaged – e.g., poles are upright, conductors are attached, transformers are in place, there are no trees or other vegetation in contact with overhead conductors, etc.

During these patrols, if equipment or assets are found in a suboptimal condition, GWP personnel will coordinate to repair the equipment and restore service. To facilitate repairs, GWP maintains a minimum level of spare distribution transformers, conduit, cables and conductors, other equipment, and associated parts in its warehouse. When minimum thresholds are reached, the warehouse automatically orders a pre-determined number of units to restore warehouse stock in anticipation of the next emergency.

In the event GWP lacks the personnel, equipment, or parts to rapidly restore service, it can leverage mutual assistance and mutual aid programs with neighboring utilities. In these cases, neighboring utilities can quickly offer personnel, equipment, and parts to safely and quickly restore service to customers.

Glendale reacts proactively whenever there is a Red Flag warning issued for the area by the National Weather Service, and de-energizes Glendale's 34.5 kV "Bel Aire-Montrose" transmission line. Also, before the line is re-energized, a lineman patrols to confirm that the line is intact and that there is no debris lodged across the insulators or the lines. Overwhelming majority of the area serviced by GWP is classified as 'Urban', with clear access by the city Fire Department, therefore the possibility of wildfire is very low, but there is a single **sub-transmission** line mentioned in the above paragraph "Bel Aire-Montrose line" that runs across an uninhabited hilly terrain covered with brush; it has limited vehicular access. This is an area of elevated fire risk. For that reason, GWP de-energizes this transmission line (without loss of customer load) each time the National Weather Service issues a Red Flag Alert.



Glendale Water & Power Wildfire Prevention and Mitigation Plan

20. Plan Maintenance and Inspection Effectiveness

This Plan is intended to be a “living document,” providing guidance to GWP on funding and operational priorities, yet with sufficient flexibility to be updated based upon new data and feedback from those responsible for its implementation.

As described in **10. Metrics** and **11. Metrics Feedback**, GWP’s metrics are intended to measure the effectiveness of this Plan. As the metrics are collected and analyzed, the Plan’s effectiveness will be evaluated and, as necessary, the Plan will be modified in response to that feedback. The Wildfire Mitigation Plan Committee will meet quarterly, or as needed, to review the Plan metrics and compare against operational performance – specifically, the Committee will assess each metric and, with the benefit of hindsight and added experience, determine the metric’s effectiveness. The Plan will be reviewed annually and circulated through GWP management, City of Glendale management, and the City of Glendale’s City Council for review and approval. This review process will include making updates to the Plan to correct any Plan deficiencies.

As discussed in **9. Preventative Strategies and Programs, Operations & Maintenance (O&M) Efforts**, GWP **contracted** with an engineering firm to conduct a complete system inspection of all poles, vaults, and associated/attached equipment. GWP staff will oversee these inspections and will assign qualified personnel to monitor and audit the inspections to ensure that they are conducted in a consistent and thorough manner. As changes to the process are required, GWP staff will be empowered to initiate those changes with the contracted inspectors. Once completed, this set of system inspections will establish a condition baseline. GWP will then use internal staff to launch an on-going inspection program, using the contractor inspection plan as a basis, to ensure system assets continue to be monitored and inspected on a regular basis.



Glendale Water & Power Wildfire Prevention and Mitigation Plan

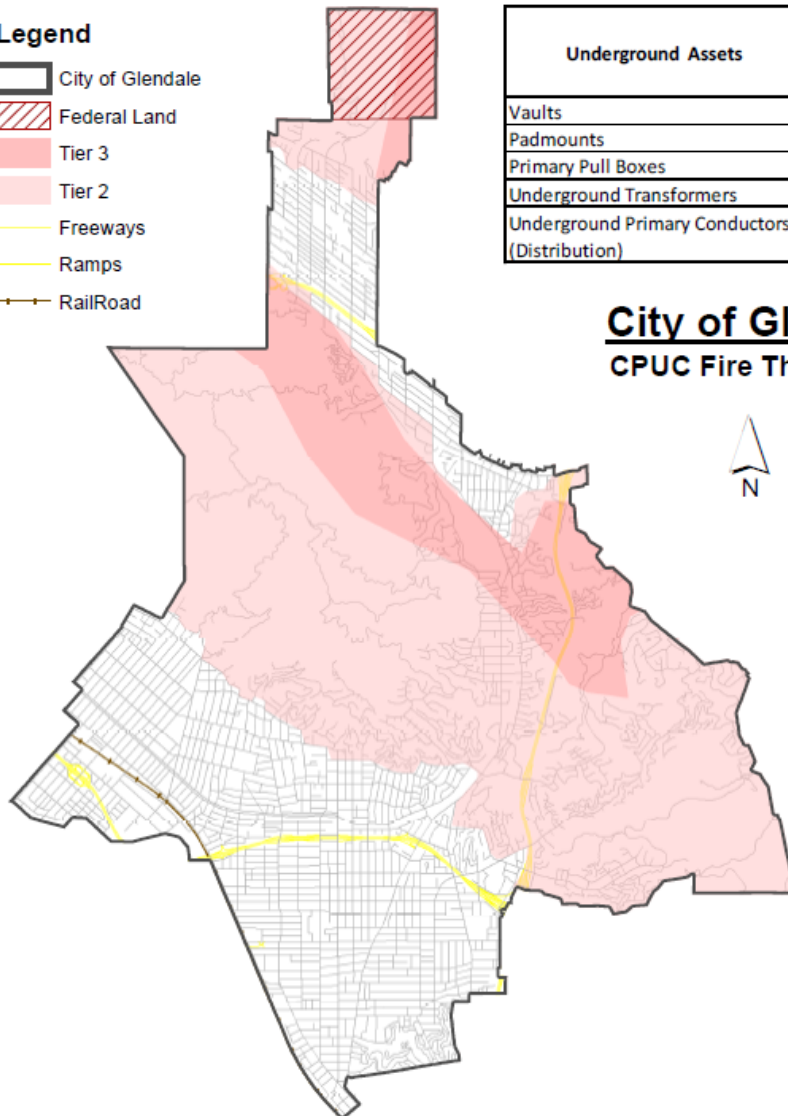
Exhibit A. City of Glendale Fire Threat Map

Overhead Assets	Total Assets				Liable Assets Requiring Additional Mitigation				Reduction	Requires Additional Mitigation
	Tier 1	Tier 2	Tier 3	Citywide	Tier 1	Tier 2	Tier 3	Citywide		
Overhead T&D Lines (Miles)	206.2	60.6	15.6	282.4	-	9.6	3.4	13	95.4%	4.6%
Poles	11,303	2,899	703	14,905	-	185	60	245	98.4%	1.6%
Transformers	3,528	673	165	4,366	-	23	3	26	99.4%	0.6%
Pole Switches	523	108	16	647	-	10	1	11	98.3%	1.7%
Pole Disconnects / Fuses	1,098	232	49	1,379	-	7	5	12	99.1%	0.9%
Area Coverage	38%	48%	14%	100%	-	0.29%	0.18%	0.47%	99.5%	0.5%
Electric Meters	77,524	10,889	1,945	90,358	-	5	1	6	100.0%	0.0%
Structures / Buildings	44,469	11,622	2,248	58,339	-	0	0	0	100.0%	0.0%

Legend

- City of Glendale
- Federal Land
- Tier 3
- Tier 2
- Freeways
- Ramps
- RailRoad

Underground Assets	Tier 2	Tier 3
Vaults	695	111
Padmounts	17	6
Primary Pull Boxes	113	16
Underground Transformers	599	90
Underground Primary Conductors (Distribution)	70.85 Miles	10.23 Miles



City of Glendale CPUC Fire Threat Map

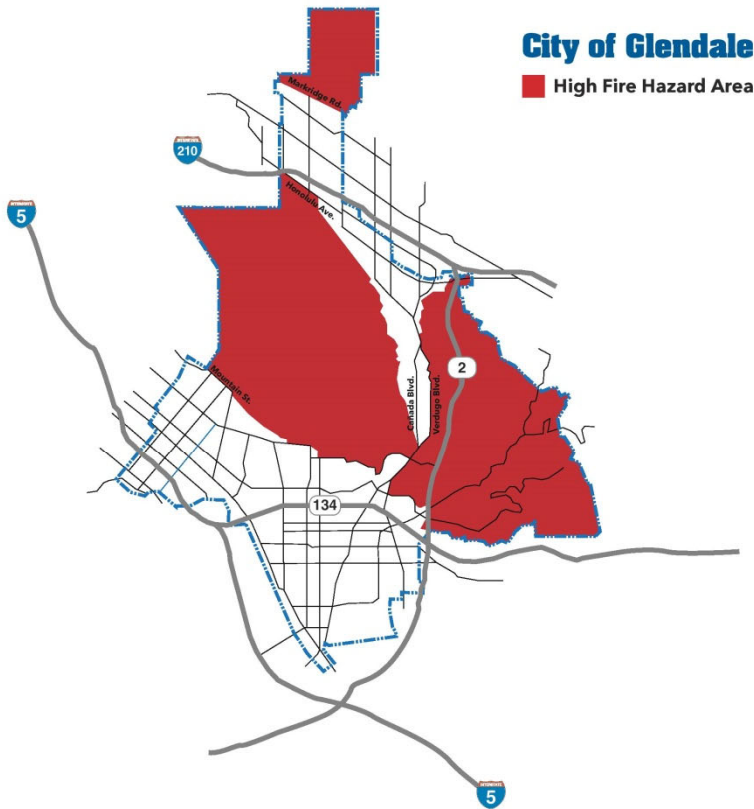





Glendale Water & Power Wildfire Prevention and Mitigation Plan

Exhibit B. Vegetation Management Program (VMP)

The two-page VMP brochure below was up to date as of the date of this Plan. For the latest version, please see <https://www.glendaleca.gov/government/departments/fire-department/fire-prevention-environmental-management/vegetation-management-and-weed-abatement>.



Defensible Space Standards for the High Fire Hazard Areas of Glendale



Annual inspections to ensure adequate defensible space begin May 1st.



Glendale Fire Prevention Bureau
780 Flower St., Glendale, CA 91201

GlendaleFire.com
(818) 548-3814

Note: Oak, bay and sycamore trees are protected in the City of Glendale. For more information call (818) 548-3950 or visit GlendaleTrees.org.

   @GlendaleFireCa



Glendale Water & Power Wildfire Prevention and Mitigation Plan

Exhibit B. Vegetation Management Program (VMP), continued

DEFENSIBLE SPACE

Creating and maintaining defensible space is essential for increasing your home's chance of surviving a wildfire. It's the buffer that homeowners are required to maintain on their property between a structure and the plants, brush and trees or other items surrounding the structure that could catch fire. This space is needed to slow the spread of wildfire and improves the safety of firefighters defending your home.

Two zones make up the required 100 feet of defensible space.

ZONE 1

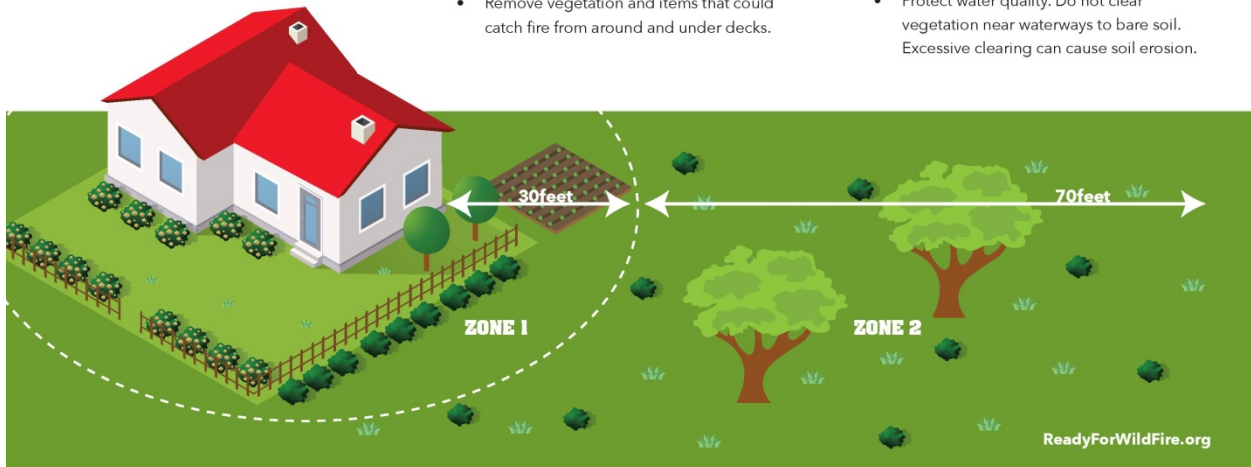
Extends **30 feet** out from buildings, decks, and other structures

- Remove all dead plants, grass and weeds.
- Remove dead or dry leaves and pine needles from your yard, roof and rain gutters.
- Trim trees regularly to keep branches a minimum of 10 feet from other trees.
- Remove dead branches that hang over your roof, and keep branches 10 feet away from your chimney.
- Remove or prune flammable plants and shrubs near windows.
- Remove vegetation and items that could catch fire from around and under decks.

ZONE 2

Extends **30 to 100 feet** out from buildings, decks, and other structures

- Cut or mow annual grass down to a maximum height of 4 inches.
- Create a minimum horizontal spacing of 20 feet between shrubs and trees.
- Create a minimum vertical spacing of 6 feet between grass, shrubs and the lowest branches on a tree.
- Remove fallen leaves, needles, twigs, bark, cones, and small branches. However, they may be permitted to a depth of 4 inches if erosion control is an issue.
- Protect water quality. Do not clear vegetation near waterways to bare soil. Excessive clearing can cause soil erosion.



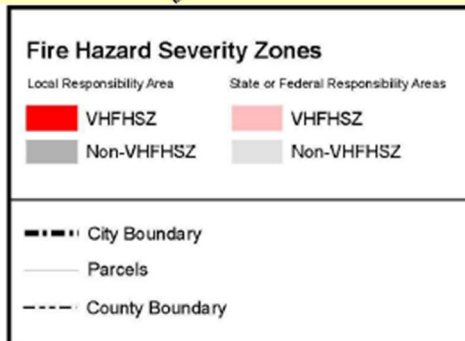
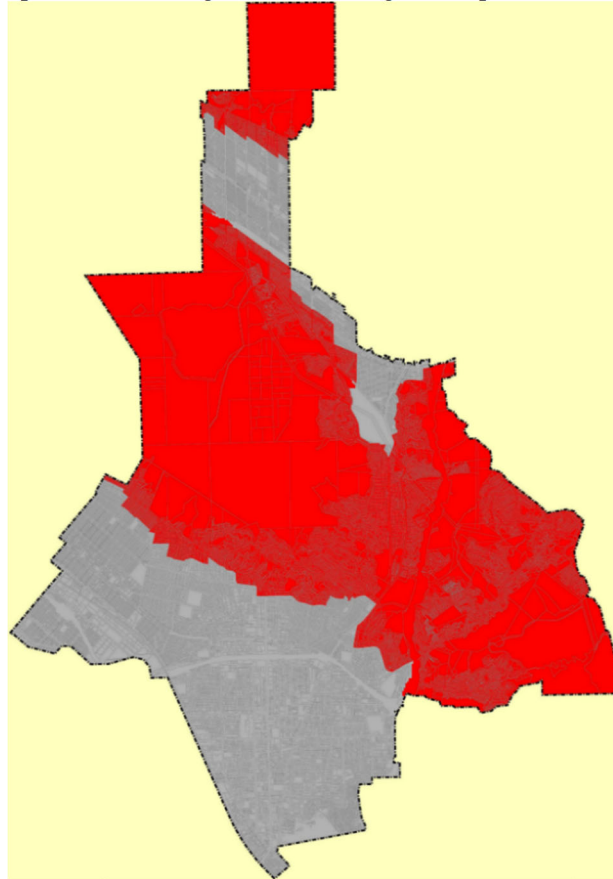


Glendale Water & Power Wildfire Prevention and Mitigation Plan

Exhibit C. General Statistics from CalFire

Glendale

Very High Fire Hazard Severity Zones in LRA
As Recommended by CAL FIRE
<https://osfm.fire.ca.gov/media/5819/glendale.pdf>



General Statistics



Glendale Water & Power Wildfire Prevention and Mitigation Plan

21. GWP Accomplishments during calendar year 2021

During calendar year 2022, GWP completed the following projects to mitigate the risk of wildfire.

- Replaced 8 power poles in Tier 2 and Tier 3.
- Replaced 8 transformers in Tier 2 and Tier 3.
- Trimmed 6787 trees within Tier 2 and Tier 3.
- Installed 8,306 feet of underground high voltage circuits within Tier 2 and Tier 3. Most new installations are underground, unless doing so would be cost-prohibitive or is otherwise unfeasible.
- Procured 15 fire resistant wrap/coating poles to install in the high risk.
- GWP's linemen replaced two power poles with fire resistant wrap/coated poles and also installed 250 feet of covered conductors in Tier 2. Project as the first was completed successfully.
- Field supervisors continually assess and inspect the electrical facilities when they are in the field for any project construction.
- We rebuilt three power poles/300 feet of overhead circuit per project #652AA-13, and 16 power poles/1568 feet under project #30076-20 for 12kV operation to increase the conductor-spacing. This will minimize the likelihood of fire due wire slapping.
- We purchased and installed the first batch of composite crossarms to improve the system reliability.
- Replacement of insulators to reduce the likelihood of overhead conductors becoming detached and contacting vegetation or other flammable materials.
- Identification, and replacement, of splices, clamps, and connectors on overhead conductors, where stress from heat or general use can cause downed conductors to come in contact with vegetation or other flammable materials.
- Installed Fusesaver device to minimize the risk of fire in brush area from ejecting a blown fuse.
- In calendar year 2021, 6787 trees were trimmed within Tier 2 & Tier 3.
- To evaluate the effectiveness of the wildfire plan, GWP came up with metrics posted on an internal website to track the number of electrical assets replaced in Tier 2 and Tier 3. These numbers were directly extracted from Electrical GIS map.
- GWP has acquired a new Outage Management System (OMS) by DataVoice International Inc., which allows efficient and quick notification to our customers of impending power outage, whether than outage is due to generation shortage or due to PSPS.



Glendale Water & Power Wildfire Prevention and Mitigation Plan

22. GWP Accomplishments during calendar year 2022

During calendar year 2022, GWP completed the following projects to mitigate the risk of wildfire.

- The approved budget for Wildfire Mitigation for the fiscal year 2022 -23 is \$200,000.
- GWP's contractor trimmed 8016 trees within Tier 2 and Tier 3. Vegetation management has been expanded to exceed minimum clearance requirements as described in GO 95, by trimming trees down to the telecommunications level. In fiscal year 22-23, we spent \$780 thousand on tree trimming and vegetation management.
- GWP construction crew replaced 14 power poles in Tier 2 and 10 power poles in Tier 3.
- Replaced 6 overhead transformers in Tier 2 and Tier 3.
- Replaced 6 underground transformers in Tier 2 and Tier 3.
- Installed 223 feet of covered conductor wires in Tier 2.
- Installed 1107 feet of underground conduits within Tier 2 and Tier 3. Most new installations are underground, unless doing so would be cost-prohibitive or is otherwise unfeasible.
- Procured 30 composite crossarms to install in the high risk.
- Inspected 71 power poles within the Glendale Service territory to identify any possible electrical equipment at the verge failure.
- Inspected 674 Street Lights within the City.
- Inspected 5 vaults within the City.
- Inspected 71 pull boxes within the City
- Glendale's longest sub-transmission line is the one connecting Bel Aire Substation in Northwest Glendale to Montrose Substation in Montrose. This 34.5kV line passes through both tier 2 and tier 3 fire-threat zones. Portions of the line lies in the mountainous area and accessing it can be difficult. The line which is mostly overhead has three conductors. These conductors can break due to aging, corrosion, lightning strikes and other reasons. If a downed energized conductor causes fire to break out due to generated heat and sparking, it would be difficult for emergency personnel to response quickly. GWP is currently implementing SEL's broken conductor detection scheme. This scheme will detect any broken conductor that may be under way to fall on the ground and de-energizes the line before the conductor hits the ground. A factory acceptance tests has been completed successfully and the project would be commissioned in the upcoming months.



Glendale Water & Power Wildfire Prevention and Mitigation Plan

23. Third-Party Independent Assessment

Exhibit D



2023 Independent Evaluation of Glendale Water and Power's 2023 Wildfire Mitigation Plan

Prepared for:

Glendale Water & Power

Submitted by:

Guidehouse Inc.
4001 South 700 East
Salt Lake City, UT 84107

May 17, 2023

[guidehouse.com](https://www.guidehouse.com)

This deliverable was prepared by Guidehouse Inc. for the sole use and benefit of, and pursuant to a client relationship exclusively with Glendale Water and Power ("Client"). The work presented in this deliverable represents Guidehouse's professional judgement based on the information available at the time this report was prepared. Guidehouse is not responsible for a third party's use of, or reliance upon, the deliverable, nor any decisions based on the report. Readers of the report are advised that they assume all liabilities incurred by them, or third parties, as a result of their reliance on the report, or the data, information, findings and opinions contained in the report.

Table of Contents

Executive Summary	1
1. Background	2
1.1 Wildfire Mitigation Plans	2
1.1.1 SB 901	2
1.1.2 AB 1054 Statutory Modifications	3
1.2 Glendale Water and Power Plan Preparation	3
1.2.1 Independent Evaluation Services	3
2. Evaluation Scope and Approach	4
2.1 Evaluation Parameters	4
2.1.1 WMP Requirements	4
2.1.2 Industry Knowledge and Regulatory Proceedings	5
2.2 Evaluation Approach	5
2.2.1 Statutory Compliance	6
2.2.2 Industry Wildfire Mitigation Practices Comparison	6
3. GWP WMP Elements	7
3.1 Stakeholders Responsible for Executing the Plan	7
3.2 Objectives of the Plan	7
3.3 Wildfire Prevention Strategies	8
3.4 Metrics	8
3.5 Disabling Reclosers	9
3.6 De-Energizing Protocols	9
3.7 Event Communication	10
3.8 Vegetation Management	10
3.9 Infrastructure Inspections	11
3.10 Risk Assessment and Drivers	11
3.11 Asset Overview and Service Territory	11
3.12 Restoration	13
3.13 Monitoring and Auditing the Plan	14
3.14 Annual Review	14
4. Results and Discussion	15
Appendix A. Statutory Compliance Matrix	A-1

List of Tables

Table 2-1 – POU Requirements	4
Table 3-1 – Breakdown of GWP's 2022 Service Territory Electrical Assets.....	13

List of Figures

Figure 1-1 – Fire Triangle.....	2
Figure 2-1 – Mitigation Strategy Overview.....	6
Figure 3-1 – GWP HFTD Map.....	12

Executive Summary

Glendale Water & Power (GWP) contracted with Guidehouse Inc. (Guidehouse) to engage in an independent evaluation of its Wildfire Mitigation Plan (WMP). This independent evaluation report (Report) describes the technical review and evaluation provided by Guidehouse. Guidehouse performed this evaluation in May 2023 and finalized the Report on May 17, 2023. Guidehouse's project team reviewed detailed information related to the Plan and assessed GWP's procedures related to the Plan.

The Plan was prepared as a response to Senate Bill (SB) 901. SB 901 and included a number of provisions and directives, among which includes the requirement for electric utilities to prepare and adopt WMPs and revise and update the Plan annually thereafter. These requirements are codified in the California Public Utilities Code (PUC) Section 8387 for publicly owned utilities (POUs).

Guidehouse evaluated the Plan based on the statutory requirements of PUC Section 8387 as it relates to POUs. This PUC Section was amended in 2019 with the signing of California's Assembly Bill (AB) 1054 into law. The POUs are now subject to the guidance provided by the California Wildfire Safety Advisory Board and mandatory cyclical reviews, including a comprehensive update every three years. The required elements for a WMP have not been modified by this new legislation. This Report meets GWP's requirements under PUC Section 8387(c), which mandates an independent evaluation of GWP's WMP. The Report was also developed to satisfy the statutory requirement for public review. This Report underlies the required presentation at a public meeting of the Glendale City Council scheduled for May 23, 2023. GWP will also present this information to the GWP Board on May 4, 2023, for advice and comments before presentation to the City Council. The Report includes the following:

- Background of the legislative history requiring WMPs and their independent evaluations
- Approach and methodology evaluating the WMP's comprehensiveness
- GWP's WMP elements and their compliance with SB 901 and PUC Section 8387 WMP elements and directives
- An evaluation of the WMP's presented metrics to assess the effectiveness of the overall WMP
- Determinations and results

Based on relevant experience in grid hardening and resiliency, natural disaster response, prior experience in WMP development, and active tracking of wildfire legislative and regulatory proceedings Guidehouse has concluded that GWP's WMP is comprehensive in accordance with PUC section 8387.

1. Background

In recent years, California has seen numerous utility equipment-involved, catastrophic wildfires. The unique geographic profile of California and the impacts of climate change, including prolonged drought, high winds, and elevated temperatures, have led to elongated fire seasons. The state also has historically high levels of past fire suppression efforts. This increasingly abundant dry vegetation is the leading driver of wildfires. These fuel-rich environments, coupled with intensified climatological conditions with high wind gusts and inherent electrical infrastructure risks, produce the conditions conducive to potential wildfire ignition. The three attributes that provide optimal conditions for a fire ignition are illustrated through the graphic in Figure 1-1.

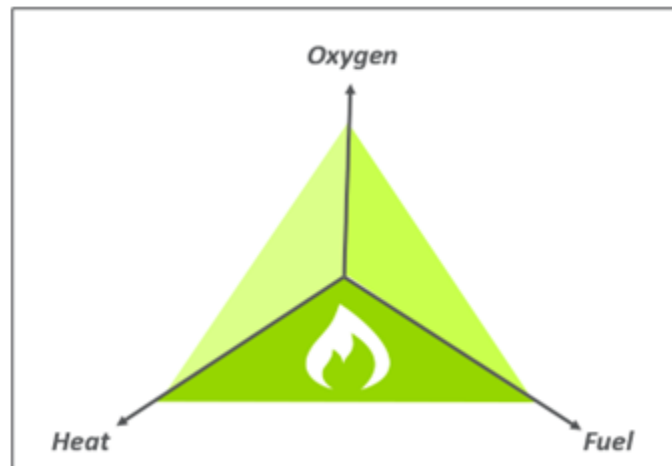


Figure 1-1 – Fire Triangle

Disastrous wildfire threat is a well-known and shared priority among electric utilities in California. Disastrous utility-involved wildfire incidents and the significant financial and livelihood impacts associated with them led California legislators and regulators to formalize requirements to ensure safe operations of electric utility equipment and greater investment in wildfire mitigation efforts. Specifically, the state has approved legislation that strengthens governmental and regulatory oversight of wildfire prevention implementation activities, utility wildfire mitigation plans, and proper dispersal of state funds to wildfire victims. In an effort to minimize future devastating occurrences through risk-driven wildfire prevention, electric utilities, including cooperatives, were mandated, by SB 901 (Senator Bill Dodd, 2018), to prepare and annually adopt a wildfire mitigation plan. This effort is foundational to the state's prioritized goal of minimizing the potential of devastating fires in future years.

1.1 Wildfire Mitigation Plans

1.1.1 SB 901

In an effort to minimize future devastating occurrences through risk-driven wildfire prevention, electric utilities, including publicly owned utilities (POUs), were mandated, by Senate Bill (SB) 901 to prepare and annually adopt a WMP. The WMPs must include several mitigation and response elements in each utility's strategies, protocols, and programs. The requirements for POUs are codified in Public Utilities Code (PUC) Section 8387. Details relating to POU requirements are discussed in Section 2 of this WMP Report.

1.1.2 AB 1054 Statutory Modifications

In 2019, Assembly Bill (AB) 1054 was signed into law, modifying the requirements for POU WMPs. AB 1054 aims to mitigate the intensity of wildfire impacts through several initiatives separate from those actions required of electric utilities. AB 1054 includes directives to establish the Wildfire Safety Division¹ at the California Public Utilities Commission and the state's Wildfire Safety Advisory Board (WSAB). AB 1054 requires POUs submit their WMPs by July 1 of each year for review by and recommendations from WSAB and requires POUs to comprehensively update their WMPs at least every three years. The most recent *Guidance Advisory Opinion for 2022 POU WMPs* was published on March 2, 2022.

1.2 Glendale Water and Power Plan Preparation

Glendale Water and Power (GWP) is a municipal utility that serves the citizens and community of Glendale, California including over 34,000 water and 89,000 electric customers that has served Glendale's electrical needs for over 100 years. GWP is owned and operated by the City of Glendale and is governed by the Glendale City Council. GWP generates, transmits, and distributes power to Glendale residential and commercial customers.

GWP prepared its first WMP in 2019, pursuant to SB 901. Throughout its history, the City of Glendale has experienced wildfires within its service territory which stemmed from dry vegetation contacting GWP electrical assets. The GWP WMP describes the various programs, policies, procedures, and activities GWP is engaging in to mitigate the threat of power-line ignited wildfires. Additionally, the GWP WMP is reviewed and updated annually in accordance with PUC Section 8387

1.2.1 Independent Evaluation Services

PUC Section 8387(c) directs POUs to procure an independent evaluation (IE) of the comprehensiveness of the WMP. The provisions of PUC Section 8387 state that the "qualified independent evaluator" shall be experienced in "assessing the safe operation of electrical infrastructure" and will perform an assessment to determine the comprehensiveness of the WMP.

Accordingly, GWP sought IE services to assess the comprehensiveness of its WMP pursuant to PUC Section 8387(c). GWP selected Guidehouse to perform this assessment based on Guidehouse's prior experience with assessing the safe operation of electrical infrastructure, including grid-hardening and WMPs, with an emphasis on electrical equipment, public, and personnel safety. Guidehouse has conducted over 12 independent evaluations of POUs across California and is a California Office of Energy Infrastructure Safety ("Energy Safety") designated qualified independent evaluator for the last two years, and as such has conducted six independent evaluations of three CA IOUs.

This Report presents the results of Guidehouse's WMP IE.

¹ Oversight and responsibility for the Wildfire Safety Division was transferred from the California Public Utilities Commission to the California Natural Resources Agency on July 1, 2021 and is now known as the Office of Energy Infrastructure Safety.

2. Evaluation Scope and Approach

Guidehouse completed this evaluation based on industry standard practices, our experience performing independent evaluations of WMPs, our active tracking of wildfire regulatory proceedings, WSAB guidance, and, most importantly, a comparison of the specific criteria in PUC Section 8387(b)(2) to the specific wildfire-related plans outlined in GWP's WMP.

2.1 Evaluation Parameters

2.1.1 WMP Requirements

Table 2-1 lists the requirements for the statutory requirements for POUs to address in their WMPs.

Table 2-1 – POU Requirements

PUC Section 8387
(a) Each local publicly owned electric utility and electrical cooperative shall construct, maintain, and operate its electrical lines and equipment in a manner that will minimize the risk of wildfire posed by those electrical lines and equipment.
(b) (1) The local publicly owned electric utility or electrical cooperative shall, before January 1, 2020, prepare a wildfire mitigation plan. After January 1, 2020, a local publicly owned electric utility or electrical cooperative shall prepare a wildfire mitigation plan annually and shall submit the plan to the California Wildfire Safety Advisory Board on or before July 1 of that calendar year. Each local publicly owned electric utility and electrical cooperative shall update its plan annually and submit the update to the California Wildfire Safety Advisory Board by July 1 of each year. At least once every three years, the submission shall be a comprehensive revision of the plan.
(2) The wildfire mitigation plan shall consider as necessary, at minimum, all of the following:
(A) An accounting of the responsibilities of persons responsible for executing the plan.
(B) The objectives of the wildfire mitigation plan.
(C) A description of the preventive strategies and programs to be adopted by the local publicly owned electric utility or electrical cooperative to minimize the risk of its electrical lines and equipment causing catastrophic wildfires, including consideration of dynamic climate change risks.
(D) A description of the metrics the local publicly owned electric utility or electrical cooperative plans to use to evaluate the wildfire mitigation plan's performance and the assumptions that underlie the use of those metrics.
(E) A discussion of how the application of previously identified metrics to previous wildfire mitigation plan performances has informed the wildfire mitigation plan.
(F) Protocols for disabling reclosers and deenergizing portions of the electrical distribution system that consider the associated impacts on public safety, as well as protocols related to mitigating the public safety impacts of those protocols, including impacts on critical first responders and on health and communication infrastructure.
(G) Appropriate and feasible procedures for notifying a customer who may be impacted by the deenergizing of electrical lines. The procedures shall consider the need to notify, as a priority, critical first responders, health care facilities, and operators of telecommunications infrastructure.
(H) Plans for vegetation management.
(I) Plans for inspections of the local publicly owned electric utility's or electrical cooperative's electrical infrastructure.

(J) A list that identifies, describes, and prioritizes all wildfire risks, and drivers for those risks, throughout the local publicly owned electric utility's or electrical cooperative's service territory. The list shall include, but not be limited to, both of the following:

(i) Risks and risk drivers associated with design, construction, operation, and maintenance of the local publicly owned electric utility's or electrical cooperative's equipment and facilities.

(ii) Particular risks and risk drivers associated with topographic and climatological risk factors throughout the different parts of the local publicly owned electric utility's or electrical cooperative's service territory.

(K) Identification of any geographic area in the local publicly owned electric utility's or electrical cooperative's service territory that is a higher wildfire threat than is identified in a commission fire threat map, and identification of where the commission should expand a high fire-threat district based on new information or changes to the environment.

(L) A methodology for identifying and presenting enterprise wide safety risk and wildfire-related risk.

(M) A statement of how the local publicly owned electric utility or electrical cooperative will restore service after a wildfire.

(N) A description of the processes and procedures the local publicly owned electric utility or electrical cooperative shall use to do all of the following:

(i) Monitor and audit the implementation of the wildfire mitigation plan.

(ii) Identify any deficiencies in the wildfire mitigation plan or its implementation, and correct those deficiencies.

(iii) Monitor and audit the effectiveness of electrical line and equipment inspections, including inspections performed by contractors, that are carried out under the plan, other applicable statutes, or commission rules.

(3) The local publicly owned electric utility or electrical cooperative shall, on or before January 1, 2020, and not less than annually thereafter, present its wildfire mitigation plan in an appropriately noticed public meeting. The local publicly owned electric utility or electrical cooperative shall accept comments on its wildfire mitigation plan from the public, other local and state agencies, and interested parties, and shall verify that the wildfire mitigation plan complies with all applicable rules, regulations, and standards, as appropriate.

(c) The local publicly owned electric utility or electrical cooperative shall contract with a qualified independent evaluator with experience in assessing the safe operation of electrical infrastructure to review and assess the comprehensiveness of its wildfire mitigation plan. The independent evaluator shall issue a report that shall be made available on the internet website of the local publicly owned electric utility or electrical cooperative, and shall present the report at a public meeting of the local publicly owned electric utility's or electrical cooperative's governing board.

2.1.2 Industry Knowledge and Regulatory Proceedings

The state's priority towards abating future catastrophic wildfire events is demonstrated through aggressive measures, directing utilities to enhance their protocols for fire prevention, public communications, and response. That collection of information is presented in a comprehensive WMP. Guidehouse tracks state proceedings and routinely advises, assesses, and guides utility wildfire mitigation efforts. Accordingly, we reviewed GWP's WMP against the provisions in PUC § 8387 and relative to its risk profile which includes, but is not limited to, its topography, climate, assets, and structure.

2.2 Evaluation Approach

Guidehouse assessed the comprehensiveness of the plan against the applicable regulations to determine whether GWP meets the standard set forth in PUC § 8387(c).

2.2.1 Statutory Compliance

Guidehouse sought to determine compliance with the provisional requirements laid out in SB901 as codified in PUC Section 8387. The WMP's alignment with the statutory requirement is presented in Appendix A. GWP's mitigation measures are not required to exceed the statutory requirements.

2.2.2 Industry Wildfire Mitigation Practices Comparison

Guidehouse's understanding of an effective WMP draws on comparisons from existing WMPs and industry practices, WSAB guidance, risk profile, and mitigation strategy. This mitigation strategy analysis is visually summarized in Figure 2-1.

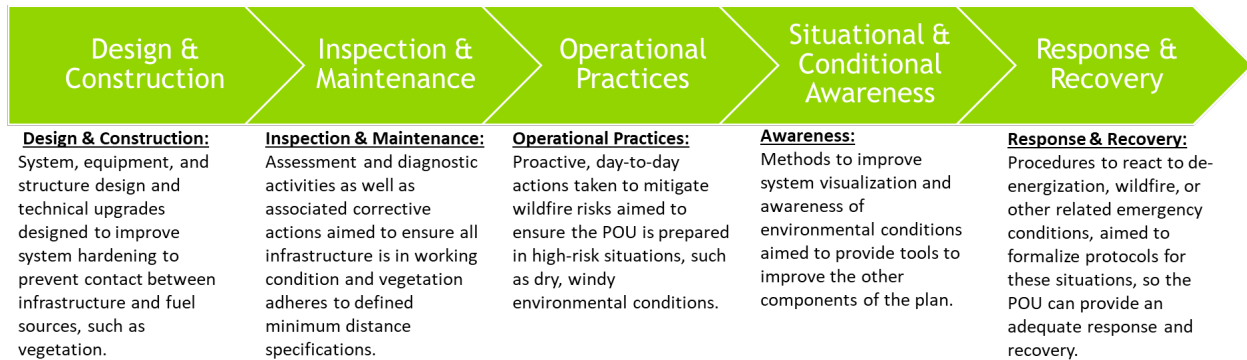


Figure 2-1 – Mitigation Strategy Overview

These critical elements are evaluated as part of Guidehouse's review of the comprehensiveness of GWP's WMP. This evaluation includes a consideration that not all of these strategies are necessarily present in or applicable to GWP's WMP, due to GWP's inherent risk, size, location, and operational characteristics.

3. GWP WMP Elements

Guidehouse reviewed the WMP elements and determined whether the activities achieve the objective of WMP “comprehensiveness” of PUC Section 8387. This determination incorporates individual elements as well as underlying data sources that further describe data collection methodologies and implementation procedures to ensure measures are carried out and also tracked.

Guidehouse determined GWP’s WMP meets the requirement of comprehensiveness PUC Section 8387. In this section, we review the WMP’s elements and their purpose relative to the development and successful execution of the WMP. A table comparing each subsection of PUC Section 8387 to the significant sections of the WMP can be found in Appendix A.

3.1 Stakeholders Responsible for Executing the Plan²

The WMP is subject to direct oversight by the City of Glendale City Council. The actions of the WMP are prioritized at the direction of the General Manager, and it is maintained, updated, and implemented by GWP personnel. Glendale’s elected, 5-member City Council approves funding and directs the City Manager to implement the key elements of this Plan. The City Manager delegates oversight and tactical implementation of this Plan to the General Manager of GWP. GWP’s General Manager has overall responsibility for the execution of GWP’s WMP with the approval of the City Council. Section 7 of the WMP, states, “the GWP General Manager maintains responsibility for, and provides management commitment to, the execution of th[e] Plan, including coordination with other department heads, with tactical and day-to-day implementation responsibilities delegated to responsible stakeholders.” Other members of the management team are responsible for executing the various components of the WMP. Responsibilities such as coordination of engineering, construction, vegetation management and operation departments, periodic reviews and maintenance of the WMP, as well as communication and coordination with local, state and federal stakeholders which includes education, alerting and community outreach fall to the Chief Assistant General Manager, Electrical Services Administrator, Electrical Superintendent, Assistant General Manager – Power Management, and other staff. Section 7 details the accountability, roles, and responsibility for GWP’s WMP.

3.2 Objectives of the Plan³

According to Section 8 of the WMP, “The primary objective of GWP’s WMP is to reduce and eliminate the probability of GWP’s Electric infrastructure as a contributing factor for the ignition of wildfire(s).” GWP, continues that the goal of this WMP includes establishing a framework, is to, “Engineer, construct, maintain, and operate the GWP electric transmission and distribution system in a manner intended to minimize the risk of catastrophic wildfire caused by electrical lines and equipment.”

GWP also set forth secondary objectives for the WMP including:

1. Improving the resiliency of GWP’s energy delivery infrastructure.

² PUC Section 8387(2)(A)

³ PUC Section 8387(2)(B)

2. Replace equipment with overloaded risk due to climate related increase in temperature results in higher peak power consumption.
3. Improving the resiliency of GWP's energy infrastructure
4. Improve situational awareness
5. Measuring the effectiveness of the mitigating measures
6. Complying with all local, state, and federal regulations related to wildfire mitigation.

3.3 Wildfire Prevention Strategies⁴

Section 9 "Preventative Strategies and Programs" provides an overview of GWP's preventative strategies and programs for preventing wildfire. These strategies and programs actions are further elaborated in Sections 21 and 22 which detail the accomplishments and elements of those strategies and programs implemented in the 2021 and 2022 calendar years. GWP also includes budget numbers which helps understand GWP funding of programs for the 2021-2022, 2022-2023, and 2023-2024 budget cycles.

GWP breaks down its efforts in three categories:

1. **Capital investments** in system hardening;
2. **Operations and maintenance (O&M)** expenditures on vegetation management, system inspections, and equipment maintenance; and
3. **Operational practices** on disabling reclosers, proactive de-energization, and public outreach, as well as leveraging City programs that are consistent with this Plan (e.g., Vegetation Management Program (VMP)).

3.4 Metrics⁵

GWP describes the metrics it tracks and how metrics are evaluated for effectiveness of mitigation measures in section 10 of the WMP. GWP monitors and tracks verifiable metrics, establishes a baseline through the inspection of transmission and distribution asset conditions, and incorporate lessons learned and institutional knowledge during an annual review as feedback for revising the WMP.

The list of metrics measures GWP performance and intends to measure the effectiveness of GWP's wildfire mitigation by tracking the following:

- After any relay event, where GWP's protective relays automatically de-energize a feeder or transmission line:
 1. Did the outage ignite a fire? (yes/no)
 2. If the outage ignited a fire, were first responders notified? (yes/no)
 3. If the outage ignited a fire, how large was the fire? < 1 acre, 1-50 acres, 50-300 acres, or > 300 acres
 4. If the outage ignited a fire, how many structures were impacted? 1, 2-10, 10-50, or > 50
- Number of trees trimmed by GWP.
- Number of poles replaced in Tier 2/3.
- Number of transformers replaced in Tier 2/3.

⁴ PUC Section 8387(2)(C)

⁵ PUC Section 8387(2)(D) and PUC Section 8387(2)(E)

- Feet/miles of transmission/distribution lines moved underground in Tier 2/3.
- Feet/miles of tree wire installed in Tier 2/3.
- Number of standard (expulsive) fuses replaced by non-expulsive fuses.
- Glendale Fire Department average time to respond to fire incidents.

3.5 Disabling Reclosers⁶

GWP states, in Section 12 of the WMP, “As part of Operational practices, GWP preemptively deenergizes overhead transmission and distribution lines and to disable automatic reclosers in its Tier 2 and Tier 3 zones during periods of extreme wildfire danger.” To minimize potential wildfire ignition, GWP uses operational consideration of reclosers that identify circuits. Additionally, the WMP states that GWP will continue to install reclosers as part of their objectives in the wildfire mitigation framework. Finally, GWP maintains a list of reclosers that are disabled in events such as Red Flag Warnings and re-enables them to perform normally as part of system restoration. GWP also patrols any de-energized line tripped off by a recloser during periods of extreme wildfire danger to identify and clear the cause of the fault before re-energization is allowed.

3.6 De-Energizing Protocols⁷

Glendale proactively de-energizes the 34.5 kV Bel Aire-Montrose transmission line during red flag warnings in accordance with its SOP-021. De-energizing this line does not impact customers due to the networked system. This overhead line traverses high wildfire risk terrain (Tier 3 and Tier 2 HFTDs). GWP has de-energized this line multiple times as described in the table on page 4 of the WMP, with none of the de-energizations resulting in a loss of customer power. The de-energization procedure is addressed in Section 12 of the WMP. GWP power system operators may also de-energize service to customers if conditions warrant such an approach.

Section 13, Customer Outreach, includes a sub section for handling de-energization or public safety shutoff events. GWP details how the use a targeted communications strategy with the goal of providing advanced notice. See Event communication below for more details. GWP uses PSPS protocols as a safety of last resort to reduce impact of PSPS events. The installation of sectionalization devices or reclosers to harden the system mitigates against PSPS impacts by targeting specific circuits near what they state are “designated meteorology shutoff polygons”.

Timing of notifications

When GWP determines a preemptive de-energization is required, either because another entity's actions suddenly limit GWP's energy supply (e.g., Southern California Edison initiates a Public Safety Power Shutoff – PSPS – on a transmission line that impacts GWP's incoming transmission capacity) or due to the PSO's system assessment, GWP will provide advance notifications in three phases:

1. Advanced notification (when possible)
 - 48 hours before electricity is turned off
 - 24 hours before electricity is turned off

⁶ PUC Section 8387(2)(F)

⁷ PUC Section 8387(2)(F)

2. Shutoff notification just before electricity is turned off
3. Notifications during the event

Post event notifications will be provided to notify customers that power has been restored.

3.7 Event Communication⁸

Section 13 describes how GWP uses communication to notify customers that may be impacted by the de-energizing of electrical lines during an emergency via multiple platforms and types of communication methods described below.

GWP describes the tools and procedures it will use to notify customers and first responders impacted by de-energization, including:

- Customer notification through email, phone, text, push notifications, social media platforms, media alerts, work with the City's Fire and Police PIO offices and websites, and rolling messages on local television (GTV6) and on the City's and GWP's websites.
- Pre-recorded IVR (Interactive Voice Response) messages with real-time recorded information informing customers that may be impacted.
- Post messages on its website and through its Mobile App and In-Home Digital Display program for targeted push messaging.
- Notifications to first responders' PIO offices, health care facilities' communication offices, and the offices of the building engineers, the Chief Executive Officer (CEO), and operators of telecommunications infrastructure.
- Contact Life Support customers through two phone attempts and an email. If no response is received, GWP will dispatch a field crew to contact the Life Support customer.
- An Outage Management system (OMS) that allows notification to customer of impending power outages for events such as PSPS.

3.8 Vegetation Management⁹

Section 14 of GWP's WMP details how GWP's Vegetation Management Program "is consistent with General Order (GO) 95– Rules for Overhead Electric Line Construction, including the clearance requirements described in Section III – Requirements for All Lines, Rule 35 Vegetation Management."

GWP's Electrical Superintendent oversees a contracted certified arborist who ensures GWP's Vegetation Management Program is implemented. GWP Line Clearance Forestry Supervisors work in the field, "overseeing the arborist and monitoring vegetation under" GWP T&D lines. The supervisors are typically certified arborists who direct the contractor to specific trees/vegetation requiring trimming and ensures the trimming is completed within GWP's standards.

Additionally, GWP leverages the City of Glendale Fire Department's (GFD) Hazardous Vegetation Management Program (VMP) to assist in ensuring adequate defensible space around buildings in the wildland-urban interface is maintained. Per the GFD VMP, activities include annual inspections and review of landscape and fuel modification plans for properties in

⁸ PUC Section 8387(2)(G)

⁹ PUC Section 8387(2)(H)

the high wildfire hazard area. This program also requires property owners to maintain a 100-foot radius of defensible space around all property structures, which happens to be where the majority of GWP electrical assets reside. Therefore, GWP prioritizes its resources on mitigating electrical assets outside of the zones covered by the GFD VMP.

GWP maintains a database that tracks vegetation maintenance activities on an inventory of trees. The inventory captures trees that could encroach minimum clearance or impact electrical facilities with a two-year inspection cycle. Additionally, vegetation management is performed by the same line mechanics that install and maintenance the power lines and other equipment.

3.9 Infrastructure Inspections¹⁰

GWP describes its annual system-wide inspection of its poles, streetlights, vaults and other equipment and assets connected or contained with these assets in Section 15 of the WMP. GWP's states the inspection program is consistent with the requirements and inspection cycles of GO 95 and 165. GWP's WMP further notes it has staff dedicated to preventative and routine inspections of the construction, installation, and maintenance of T&D assets. During these inspections, problems are identified, prioritized, and corrected.

3.10 Risk Assessment and Drivers¹¹

Section 16 details the City of Glendale's wildfire risks and associated drivers. GWP's service territory consists of highly developed urban land and adjacent mountainous open regions with dry vegetation. The diversity in topography and landscapes within GWP's service territory presents unique risks that GWP claims "requires a surgical approach to mitigation efforts in each area of the city." GWP risk drivers and subsequent preventative strategies are tailored specifically to mitigate the potential of a wildfire and limit wildfire spread within its service territory.

Additionally, GWP adopted a risk-based approach designed to prioritize capital improvements, Operations and Maintenance (O&M) work, and operating procedures pertaining to asset hardening, situational awareness and forecasting, vegetation management, asset inspections, and risk assessment and mapping initiatives. The prioritization leverages historical data from the state of California Wildfire Redbooks and provides details of statistics from 2012 through 2016 for the 2023 WMP. The data includes vegetation contacts, hardware installed, lines down, animal contacts, and line slap events.

Furthermore, GWP has identified overhead feeder and transmission lines sections as the highest risk for igniting wildfires and analyses these sections on a case-by-case basis for an appropriate mitigation approach.

3.11 Asset Overview and Service Territory¹²

GWP leverages the CPUC's and CALFire's tiered fire maps as well as GFD's fire maps to identify wildfire risk across the Glendale service territory. The image below is included on page 48 of the WMP displays the presence of the CPUC HFTDs and includes the of GWP equipment

¹⁰ PUC Section 8387(2)(I)

¹¹ PUC Section 8387(2)(J)(i); PUC Section 8387(2)(J)(ii); PUC Section 8387(2)(L)

¹² PUC Section 8387(2)(K)

in those areas. GWP has also identified areas within HFTD Tier 2 and 3 as areas “requiring additional mitigation.” This area excludes the areas maintained by GFD as part of their areas of responsibility and the defensible space program. GWP also identifies the equipment present in these areas of heightened risk and prioritizes mitigation work there.

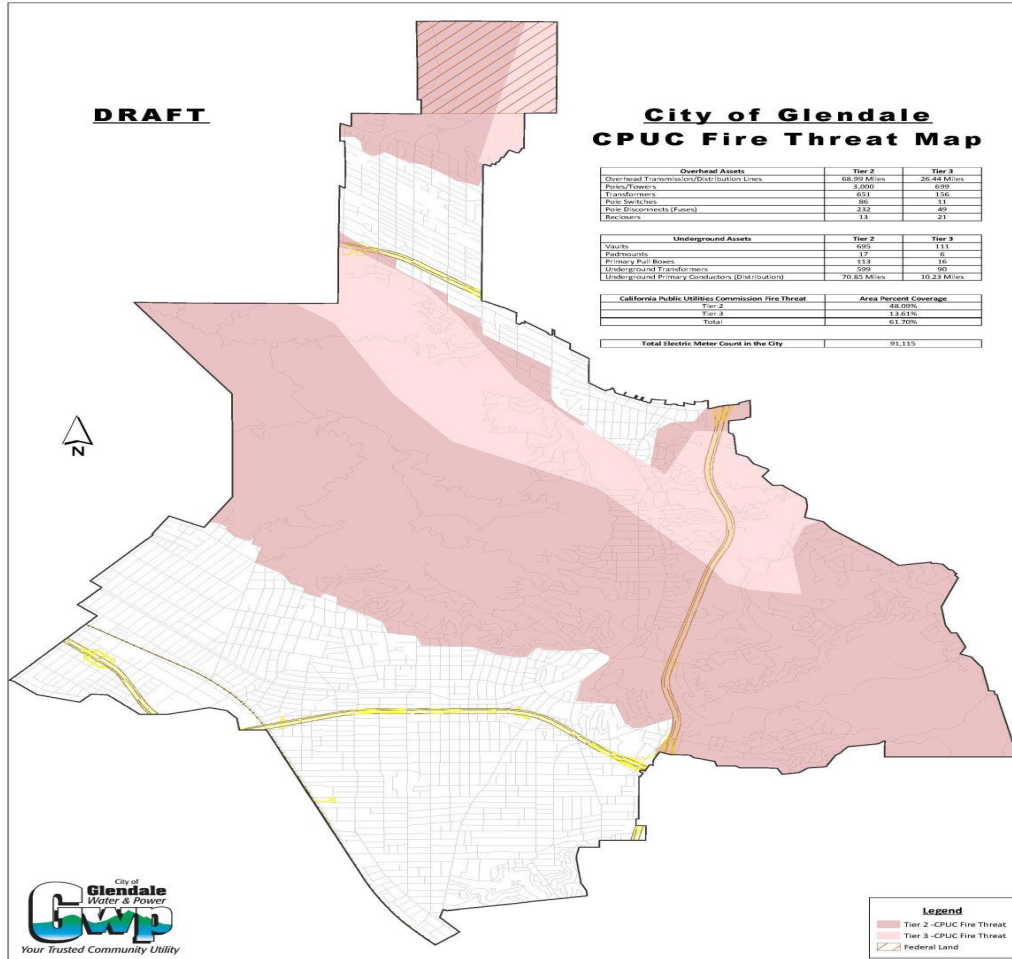


Figure 3-1 – GWP HFTD Map

As shown in Table 3-1, approximately 21% of GWP’s total 282.4 miles of overhead T&D lines are located within the Tier 2 HFTD area. Approximately 5% of total overhead T&D lines are within the Tier 3 HFTD area. The remaining ~74% of total overhead T&D lines are in the Tier 1 HFTD. Section 17 “Wildfire Zones” included the table below as Figure 3 in the WMP. This table helps GWP catalog its riskiest equipment to plan for future mitigations.

Table 3-1 – Breakdown of GWP’s 2022 Service Territory Electrical Assets

	Total Assets			
	Tier 1	Tier 2	Tier 3	City Wide
Overhead T+D Lines (miles)	206.2	60.6	15.6	282.4
Poles / Towers	11,303	2,899	703	14,905
Transformers	3,528	673	165	4,366
Pole Switches	523	108	16	647
Pole Disconnects / Fuses	1,098	232	49	1379
Reclosers	28	12	3	43.0
Area Coverage	38%	48%	14%	100%
Electric Meters	77,524	10,889	1,945	90,358
Structures / Buildings	44,469	11,622	2,248	58,339

3.12 Restoration¹³

Section 19 describes how GWP restores power following a wildfire or pre-emptive de-energization.

GWP’s WMP states that as a proactive reaction to a Red Flag warning, GWP de-energizes, “Glendale’s 34.5 kV “Bel Aire-Montrose” which runs through uninhabited hilly terrain that is covered with brush and has limited access and is considered an area of elevated fire risk. Prior to re-energization, GWP’s lineman patrols confirm that the line is intact, and no debris is lodged across the line.”

Additionally, GWP maintains a list of reclosers which are disabled following the orders of the PSO or in the event of a red flag warning to minimize the likelihood of inadvertently sparking a fire. GWP manually patrols de-energize lines, whether from a tripped recloser or proactive de-energization, prior to re-energization. GWP personnel ensures infrastructure and equipment are not damaged during patrols and notifies system dispatch of restoration readiness.

If equipment or assets are found to be damage or in “suboptimal condition”, GWP coordinates the repair of the equipment and restoration. GWP maintains an inventory of spare equipment including, transformers, conduit, cables, conductors, and other equipment in their warehouse. Equipment is automatically re-ordered from a predetermined number of units to be ready for future emergencies. GWP also works with neighboring utilities that assist with personnel, equipment, and parts to quickly restore service to customers as needed.

¹³ PUC Section 8387(2)(M)

3.13 Monitoring and Auditing the Plan¹⁴

Section 20 describes how the GWP WMP is monitored and audited. Specifically, the WMP states that GWP will review the WMP annually to monitor the effectiveness of the objectives of the WMP. The review includes quarterly assessments, and comparisons of metrics and GWP operational performance and requires City of Glendale management and City Council to review and approve any problems identified for correction and updates to the maintenance and inspection plan. After completion of the annual internal review, the WMP is updated accordingly. A condition baseline is established after changes to the plan to ensure proper monitoring and inspection continues on system assets on a regular basis.

3.14 Annual Review¹⁵

Section 6 includes a “Compliance” sub-section, that states, “the GWP General Manager or his delegate shall support and administer this Plan to include monitoring and auditing the implementation of the Plan. The Plan shall be updated, reviewed, and approved by the General Manager of GWP on an annual basis, or as required by law. This periodic review shall ensure that the Plan is updated to comply with all state regulations and City regulations and requirements.” Additionally, GWP will present the plan annually to the City Council or the GWP Commission for approval.

¹⁴ PUC Section 8387(2)(N)(i) and PUC Section 8387(2)(N)(ii)

¹⁵ PUC Section 8387(2)(N)(iii)

4. Results and Discussion

Guidehouse finalized this assessment on May 17, 2023. Over the course of reviewing GWP's WMP, discussions with GWP staff, and review of supporting documentation, Guidehouse captured takeaways and findings that align the WMP with state laws and effective wildfire measure demonstration for a utility of GWP's size and low-risk profile. GWP's WMP appropriately responds to each of the required elements of PUC Section 8387, which is detailed in Appendix A. The following describes the assessment and resulting findings of the WMP's proposed and established mitigation measures as it applies to safe, reliable operation of all electric infrastructure and wildfire prevention and response.

Report Conclusions

After internal review of the latest version of the WMP and associated data collection products, Guidehouse concludes this Report with the following:

- GWP's WMP aligns appropriately with PUC Section 8387 and includes all required elements.¹⁶
- GWP's WMP is comprehensive as described through this Report in accordance with PUC Section 8387.

¹⁶ Following acceptance of this Report, GWP will post the Report and results online for public view. The Report is scheduled for presentation to the City Council at a public meeting in June 2023. Accomplishing these follow-up tasks will meet all required statutory provisions up until presenting the final WMP to the City Council.

Appendix A. Statutory Compliance Matrix

Required Statutory Element	Plan Section Reference(s)	GWP Plan Elements (Summarized)	Meets Section Elements (Determination)
(a) Each local publicly owned electric utility and electrical cooperative shall construct, maintain, and operate its electrical lines and equipment in a manner that will minimize the risk of wildfire posed by those electrical lines and equipment.			
(b) (1) The local publicly owned electric utility or electrical cooperative shall, before January 1, 2020, prepare a wildfire mitigation plan. After January 1, 2020, a local publicly owned electric utility or electrical cooperative shall prepare a wildfire mitigation plan annually and shall submit the plan to the California Wildfire Safety Advisory Board on or before July 1 of that calendar year. Each local publicly owned electric utility and electrical cooperative shall update its plan annually and submit the update to the California Wildfire Safety Advisory Board by July 1 of each year. At least once every three years, the submission shall be a comprehensive revision of the plan.			
(2) The wildfire mitigation plan shall consider as necessary, at minimum, all of the following:			
(A) An accounting of the responsibilities of persons responsible for executing the plan.	Section 7 Pg.12-16	The "Stakeholders" section in GWP's plan describes the roles of the General Manager, Chief Assistant General Manager, Electrical Services Administrator, Electrical Superintendent, Power Management Assistant General Manager, GWP Legislative Analyst, the Public Benefits Charge Marketing Manager, City Council, and City Manager. Additional roles and responsibilities are delegated to GWP staff.	Yes

<p>(B) The objectives of the wildfire mitigation plan.</p>	<p>Section 8; pg. 17-18</p>	<p>GWP states the primary objective of its plan is to reduce and eliminate the probability of GWP's Electric infrastructure as a contributing factor for the ignition of wildfire(s). GWP goes on to state additional secondary objectives.</p>	<p>Yes</p>
<p>(C) A description of the preventive strategies and programs to be adopted by the local publicly owned electric utility or electrical cooperative to minimize the risk of its electrical lines and equipment causing catastrophic wildfires, including consideration of dynamic climate change risks.</p>	<p>Section 9; pg. 19-23</p>	<p>Section 9 provides detailed preventative strategies and programs identified by GWP to reduce wildfire risk. GWP has elected to break these strategies and programs down into four sections (Capital Investments, Operations and Maintenance, Wildfire Mitigation Budget Measures, and Operational Practices). GWP also acknowledges the impact of dynamic climate change in California has on these strategies.</p>	<p>Yes</p>
<p>(D) A description of the metrics the local publicly owned electric utility or electrical cooperative plans to use to evaluate the wildfire mitigation plan's performance and the assumptions that underlie the use of those metrics.</p>	<p>Section 10; pg. 24-26</p>	<p>GWP provides a list of metrics it uses to demonstrate results and measure the effectiveness of its wildfire mitigation. The metrics include, but are not limited to, trees trimmed, poles replaced, transformers replaced, undergrounding, and post event evaluation.</p>	<p>Yes</p>
<p>(E) A discussion of how the application of previously identified metrics to previous wildfire mitigation plan performances has informed the wildfire mitigation plan.</p>	<p>Section 11; pg. 27</p>	<p>GWP discusses how the application of previously identified metrics to previous wildfire mitigation plan performances has informed the wildfire mitigation plan. GWP uses four categories with specific questions to guide the review and how GWP should evaluate and respond to the data in the metric. The categories include: metric not met, metric significantly exceeded, new or obsolete metric, and adjustments based upon metric.</p>	<p>Yes</p>
<p>(F) Protocols for disabling reclosers and deenergizing portions of the electrical distribution system that consider the associated impacts on public safety, as well as protocols related to mitigating the public safety impacts of those protocols, including impacts on critical first responders and on health and communication infrastructure.</p>	<p>Section 12; pg. 28-30</p>	<p>GWP discusses its plan to de-energize certain electrical lines and equipment. This includes GWP's practice to de-energize the Bel Aire-Montrose line during RFW conditions, which does not interrupt service to any customers. This section references SOP-021 which provides more detail to how the process is handled. GWP also identifies the considerations (Hospital, Elderly Care, First Responder Facilities, etc..) prior to a de-energization. GWP states that de-energization is a last resort, and Tier 2 and Tier 3 zones are the primary focus areas in times of extreme fire danger.</p>	<p>Yes</p>

		This section also describes how GWP will disable reclosers in Tiers 2 and 3 HFTD during periods of extreme wildfire danger.	
(G) Appropriate and feasible procedures for notifying a customer who may be impacted by the deenergizing of electrical lines. The procedures shall consider the need to notify, as a priority, critical first responders, health care facilities, and operators of telecommunications infrastructure.	Section 13; pg. 32-33	GWP's customer outreach protocols during PSPS events are detailed in the WMP. GWP alerts customers through social media, GFD and GPD website notifications, and post rolling messages on local television networks.	Yes
(H) Plans for vegetation management.	Section 14; pg. 34	GWP details its vegetation management program in its WMP including details regarding the oversight of a contracted arborists that implements their program. GWP states it is consistent with GO 95. GWP also relies upon GFD's efforts to maintain defensible spaces around private residences.	Yes
(I) Plans for inspections of the local publicly owned electric utility's or electrical cooperative's electrical infrastructure.	Section 15; pg. 35	GWP's WMP states that it consistent with the inspection cycles and requirements provided in GO 95 and 165.	Yes
(J) A list that identifies, describes, and prioritizes all wildfire risks, and drivers for those risks, throughout the local publicly owned electric utility's or electrical cooperative's service territory. The list shall include, but not be limited to, both of the following:	Section 16; pg. 36	GWP's assessment of risk and risk drivers include capital improvements, O&M work, and operating procedures.	Yes
(i) Risks and risk drivers associated with design, construction, operation, and maintenance of the local publicly owned electric utility's or electrical cooperative's equipment and facilities.	Section 16; pg. 36	GWP identified risks and risk drivers associated with its equipment and, accordingly, adopted a risk-based approach to prioritize capital improvements, O&M work, and operating procedures within asset hardening, situational forecasting, vegetation management, and risk assessment and mapping initiatives.	Yes
(ii) Particular risks and risk drivers associated with topographic and climatological risk factors throughout the different parts of the local publicly owned electric utility's or electrical cooperative's service territory.	Section 16; pg. 36	GWP discusses the risks and risk drivers associated with its topographic and climatological factors within its service territory.	Yes

<p>(K) Identification of any geographic area in the local publicly owned electric utility's or electrical cooperative's service territory that is a higher wildfire threat than is identified in a commission fire threat map, and identification of where the commission should expand a high fire-threat district based on new information or changes to the environment.</p>	<p>Section 17; pg. 39</p>	<p>GWP utilizes the CPUC HFTD methodology for classifying each area of its service territory as Tier 1 (low risk), Tier 2, (elevated risk), and Tier 3 (extreme risk). This is further refined by reviewing the CPUC designations against those of CALFire's fire hazard severity zone's and the GFD's own Fire Threat Map. GWP then further identified the areas within the Tier 2 & 3 HFTD's that require additional mitigation.</p> <p>GWP did not request an expansion of any HFTD.</p>	<p>Yes</p>
<p>(L) A methodology for identifying and presenting enterprise-wide safety risk and wildfire-related risk.</p>	<p>Section 18; pg. 42-44</p>	<p>GWP's methodology for identifying and presenting enterprise-wide safety risk and wildfire-related risk consists of prioritizing first, second, and third order impacts within its service territory</p>	<p>Yes</p>
<p>(M) A statement of how the local publicly owned electric utility or electrical cooperative will restore service after a wildfire.</p>	<p>Section 19; pg. 46</p>	<p>GWP's WMP provides a statement of how it plans to restore service after a wildfire, including a discussion on lineman patrols which take place prior to restoring service.</p>	<p>Yes</p>
<p>(N) A description of the processes and procedures the local publicly owned electric utility or electrical cooperative shall use to do all of the following:</p>			
<p>(i) Monitor and audit the implementation of the wildfire mitigation plan.</p>	<p>Section 20; pg. 47</p>	<p>GWP performs annual WMP reviews which are circulated through GWP management and presented to the City of Glendale's City Council or GWP's Commission for approval.</p>	<p>Yes</p>
<p>(ii) Identify any deficiencies in the wildfire mitigation plan or its implementation and correct those deficiencies.</p>	<p>Section 20; pg. 47</p>	<p>GWP performs annual reviews where plan deficiencies are identified and corrected.</p>	<p>Yes</p>
<p>(iii) Monitor and audit the effectiveness of electrical line and equipment inspections, including inspections performed by contractors, that are carried out under the plan, other applicable statutes, or commission rules.</p>	<p>Section 20; pg. 47</p>	<p>GWP staffs qualified personnel to monitor and audit asset and equipment inspections.</p>	<p>Yes</p>

<p>(3) The local publicly owned electric utility or electrical cooperative shall, on or before January 1, 2020, and not less than annually thereafter, present its wildfire mitigation plan in an appropriately noticed public meeting. The local publicly owned electric utility or electrical cooperative shall accept comments on its wildfire mitigation plan from the public, other local and state agencies, and interested parties, and shall verify that the wildfire mitigation plan complies with all applicable rules, regulations, and standards, as appropriate.</p>	<p>Section 4; pg. 5</p>	<p>GWP presents its WMP to the City Council at annual public meetings</p>	<p>Yes</p>
<p>(c) The local publicly owned electric utility or electrical cooperative shall contract with a qualified independent evaluator with experience in assessing the safe operation of electrical infrastructure to review and assess the comprehensiveness of its wildfire mitigation plan. The independent evaluator shall issue a report that shall be made available on the internet website of the local publicly owned electric utility or electrical cooperative, and shall present the report at a public meeting of the local publicly owned electric utility's or electrical cooperative's governing board.</p>	<p>Section 7; pg. 14</p>	<p>GWP contracts with third-party independent evaluators to perform independent evaluations of its WMP. GWP contracted Guidehouse Inc. to perform an independent evaluation of their WMP in 2023. Qualifications are described in Section 1.</p>	<p>Yes</p>