



May 12, 2026

Jared Hennen  
Wildfire Mitigation and Reliability Engineer  
Bear Valley Electric Service, Inc.  
42020 Garstin Drive  
Big Bear Lake, CA 92315

## NOTICE OF NON-PERFORMANCE

Mr. Jared Hennen:

Pursuant to Government Code section 15472, et seq, the Office of Energy Infrastructure Safety (Energy Safety) conducted inspections of work completed by Bear Valley Electric Service, Inc. (BVES) in accordance with its 2025 Wildfire Mitigation Plan (WMP). During the inspections, Energy Safety determined the existence of non-performance requiring correction. Energy Safety therefore issues BVES a Notice of Non-Performance (NON).

On May 5, 2026, Energy Safety conducted an inspection of BVES's WMP initiatives in the vicinity of Big Bear City, California in High Fire Threat District (HFTD) Tier 2 and State Responsibility Area (SRA). The inspection report is enclosed herewith. Energy Safety found the following deficiency:

Deficiency 1. Energy Safety observed that BVES failed to implement its 2025 WMP initiative 8.2.3.4 Fall-in Mitigation, by not removing a dead, rotten or diseased tree near coordinates 34.26713531028709, -116.84599287356302. Energy Safety considers this non-performance to be in the Moderate risk category. BVES must complete a corrective action for this non-performance by six months from the date of this notice.<sup>1</sup>

Within 30 days from the issuance date of this NON, BVES must provide a response advising Energy Safety of corrective actions taken or planned to remedy the identified deficiency.

This response shall be filed in the Energy Safety e-Filing system under the 2025 NON Docket<sup>2</sup> and the associated file name(s) must begin with the NON identification number.

Prior to its response, BVES may request an informal conference with Energy Safety for the purpose of disputing any issues raised in this NON no later than ten (10) business days before the response deadline.<sup>3</sup> Requests for

---

<sup>1</sup> Gov. Code section 15475.2(a)(2)

<sup>2</sup> <https://efiling.energysafety.ca.gov/EFiling/DocketInformation.aspx?docketnumber=2025%20NON>

<sup>3</sup> Energy Safety Performance Guidelines, p. 4

informal conference with Energy Safety must be e-mailed to [environmentalscience@energysafety.ca.gov](mailto:environmentalscience@energysafety.ca.gov), with a copy sent to me and Akiko Masuda, [Akiko.Masuda@energysafety.ca.gov](mailto:Akiko.Masuda@energysafety.ca.gov).

Sincerely,

*Elizabeth McAlpine*

Elizabeth McAlpine

Supervisory Environmental Scientist | Environmental Science Division

Office of Energy Infrastructure Safety

[Elizabeth.McApline@energysafety.ca.gov](mailto:Elizabeth.McApline@energysafety.ca.gov)

Cc:

Tom Tzu-Tong Chou

[Tom.Chou@bvesinc.com](mailto:Tom.Chou@bvesinc.com)

Paul Marconi

[Paul.Marconi@bvesinc.com](mailto:Paul.Marconi@bvesinc.com)

Alicia Menchaca

[Alicia.Menchaca@bvesinc.com](mailto:Alicia.Menchaca@bvesinc.com)



# INSPECTION REPORT

## Overview

The Office of Energy Infrastructure Safety (Energy Safety) conducts field inspections to verify the work performed by an electrical corporation as reported in an approved Wildfire Mitigation Plan (WMP), and to assess general conditions of electrical infrastructure that may adversely impact an electrical corporation’s wildfire risk. A Notice of Non-Performance (NON) is issued for any instances of non-performance identified during an inspection of its WMP initiatives.

Energy Safety has designated this finding of a deficiency as a “Moderate” risk. BVES must correct the deficiency pursuant to the timeline provided in Table 1.<sup>4</sup>

**Table 1. Risk Category and Correction Timelines**

Risk Category	Deficiency correction timeline
Severe	<ul style="list-style-type: none"><li>• Immediate resolution</li></ul>
Moderate	<ul style="list-style-type: none"><li>• 2 months (in High Fire Threat District (HFTD) Tier 3)</li><li>• 6 months (in HFTD Tier 2)</li><li>• 6 months (if relevant to worker safety; not in HFTD Tiers 2 or 3)</li></ul>
Minor	<ul style="list-style-type: none"><li>• 12 months</li></ul>

---

<sup>4</sup> Energy Safety Performance Guidelines, p. 4



# Inspection Summary

Energy Safety found a “Moderate” deficiency near pole ID 5151BV in HFTD Tier 2. BVES failed to remove the danger tree.<sup>5</sup>

The inspection location and WMP initiative summary are included in Table 2.

***Table 2: Inspection Location and Initiative Summary***

Electrical Corporation:	BVES
Report Number:	NON_ESD_BVES_RGA_20260505_1253
Inspector:	Ricardo Garcia
WMP Year Inspected:	2025
Quarterly Data Report (QDR) Referenced:	Quarter 4 (Q4) 2025
Inspection Selection:	Energy Safety inspected the locations based on BVES’s Q4 QDR.
Relevant WMP Initiative(s):	8.2.3.4 Fall-in Mitigation
Date of inspection:	May 5, 2026
City and/or County of Inspection:	Big Bear City, California

---

<sup>5</sup> BVES “2023-2025 Base WMP”, published July 22, 2024. P. 220  
(<https://efiling.energysafety.ca.gov/eFiling/Getfile.aspx?fileid=57056&shareable=true> accessed May 11, 2026)

# Inspection Findings

## Deficiency 1

### **Relevant Requirement:**

BVES's WMP initiative 8.2.3.4 Fall-in Mitigation states: "Trees that are dead, rotten, or diseased, or dead, rotten, or diseased portions of otherwise healthy trees which overhang or lean toward and may fall into a span of power lines, should be removed. Note that this may apply to trees outside the clearance zone (for example, a dead tree across the street may pose a danger to BVES power lines)."<sup>6</sup>

### **Findings:**

Energy Safety considers this deficiency as "Moderate" because BVES has not removed the dying pine tree located within striking distance of conductors. The continued presence of this tree presents an ongoing wildfire risk.

On May 5, 2026, Energy Safety conducted an inspection of BVES's WMP's initiatives in the vicinity of Big Bear City, California. During the inspection, Energy Safety identified a dead pine tree near pole ID 5151BV and near coordinates 34.26713531028709, -116.84599287356302 along Sierra Avenue. The pine tree is located within the SRA. The pine tree has an estimated diameter at breast height of 18 inches and is approximately 80 feet tall. It is located approximately 30 feet west of the conductors. The inspector's observations are documented in Exhibit A photographs, which are attached to this report. Photo 1 depicts pole ID 5151BV. Photos 2 and 3 depict the dead pine tree.

---

<sup>6</sup> BVES "2023-2025 Base WMP", published July 22, 2024. P. 220  
(<https://efiling.energysafety.ca.gov/eFiling/Getfile.aspx?fileid=57056&shareable=true> accessed May 11, 2026)

# Exhibits

Exhibit A: Photo Log

Structure ID: 5151BV

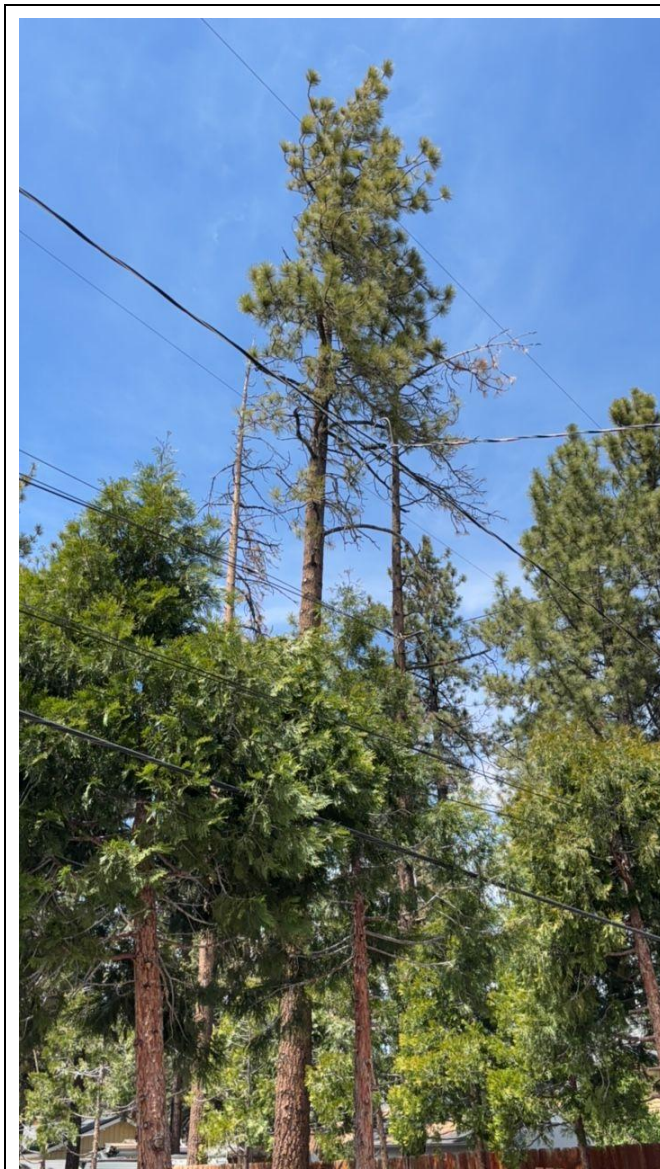
Deficiency 1



**Photo 1:** Photo of pole ID 5151BV, located 132 feet north of the subject tree.



**Photo 2:** Photo of dead pine tree (right). Refer to NON\_ESD\_BVES\_RGA\_20260505\_1247 regarding another dead pine tree shown on the left.



**Photo 3:** Photo of dead pine tree (left) from a different angle. Refer to [NON\\_ESD\\_BVES\\_RGA\\_20260505\\_1247](#) regarding another dead pine tree shown on the right.